


Product datasheet

Anti-Cannabinoid Receptor I antibody ab40860

★★★★★ 2 Abreviews 1 References 画像数 1

製品の概要

<b>製品名</b>	Anti-Cannabinoid Receptor I antibody
<b>製品の詳細</b>	Goat polyclonal to Cannabinoid Receptor I
<b>由来種</b>	Goat
<b>特異性</b>	This antibody is expected to recognise both reported isoforms (NP_057167.2 and NP_149421.1).
<b>アプリケーション</b>	<b>適用あり:</b> WB
<b>種交差性</b>	<b>交差種:</b> Mouse, Human <b>交差が予測される動物種:</b> Rat, Dog 
<b>免疫原</b>	Synthetic peptide: HTSEDGKVQVTRPDQ , corresponding to Internal sequence amino acids 320-334 of Human Cannabinoid Receptor I  <a href="#">Run BLAST with</a> <a href="#">Run BLAST with</a>
<b>ポジティブ・コントロール</b>	Rat brain lysate. Lysate prepared from transfected HEK293 cells over-expressing Cannabinoid Receptor I.

製品の特性

<b>製品の状態</b>	Liquid
<b>保存方法</b>	Shipped at 4°C. Upon delivery aliquot and store at -20°C. Avoid freeze / thaw cycles.
<b>バッファー</b>	pH: 7.30 Preservative: 0.02% Sodium azide Constituents: Tris buffered saline, 0.5% BSA
<b>精製度</b>	Immunogen affinity purified
<b>特記事項(精製)</b>	Purified from goat serum by ammonium sulphate precipitation followed by antigen affinity chromatography using the immunizing peptide.
<b>ポリ/モノ</b>	ポリクローナル
<b>アイソタイプ</b>	IgG

アプリケーション

Our [Abpromise guarantee](#) covers the use of **ab40860** in the following tested applications.

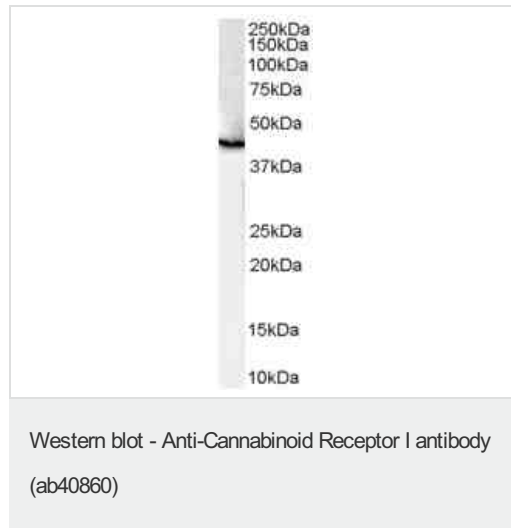
The application notes include recommended starting dilutions; optimal dilutions/concentrations should be determined by the end user.

アプリ ケーション	Abreviews	特記事項
WB		Use a concentration of 1 - 3 µg/ml. Detects a band of approximately 65 kDa (predicted molecular weight: 53 kDa). 65kDa band detected in rat brain lysate. The observed molecular weight corresponds to earlier findings in literature with different antibodies (Porcella et al, Eur J Neurosci. 2000 Mar;12(3):1123-7. PMID: 10762343).

## ターゲット情報

機能	Involved in cannabinoid-induced CNS effects. Acts by inhibiting adenylate cyclase. Could be a receptor for anandamide. Inhibits L-type Ca(2+) channel current. Isoform 2 and isoform 3 have altered ligand binding.
組織特異性	Widely expressed.
配列類似性	Belongs to the G-protein coupled receptor 1 family.
細胞内局在	Cell membrane.

## 画像



Anti-Cannabinoid Receptor I antibody (ab40860) at 1 µg/ml + Human Brain lysate (35µg protein in RIPA buffer).

**Predicted band size:** 53 kDa

**Observed band size:** 46 kDa

Primary incubation was 1 hour. Detected by chemiluminescence.

**Please note:** All products are "FOR RESEARCH USE ONLY AND ARE NOT INTENDED FOR DIAGNOSTIC OR THERAPEUTIC USE"

## Our Abpromise to you: Quality guaranteed and expert technical support

- Replacement or refund for products not performing as stated on the datasheet
- Valid for 12 months from date of delivery
- Response to your inquiry within 24 hours
- We provide support in Chinese, English, French, German, Japanese and Spanish

- Extensive multi-media technical resources to help you
- We investigate all quality concerns to ensure our products perform to the highest standards

If the product does not perform as described on this datasheet, we will offer a refund or replacement. For full details of the Abpromise, please visit <https://www.abcam.co.jp/abpromise> or contact our technical team.

### **Terms and conditions**

---

- Guarantee only valid for products bought direct from Abcam or one of our authorized distributors