


Product datasheet

Anti-CREB antibody ab84757

★★★★☆ 1 Abreviews [画像数 3](#)

製品の概要

製品名	Anti-CREB antibody
製品の詳細	Rabbit polyclonal to CREB
由来種	Rabbit
アプリケーション	適用あり: IHC-P
種交差性	交差種: Mouse, Human 交差が予測される動物種: Rat, Sheep, Rabbit, Horse, Chicken, Guinea pig, Cow, Dog, Turkey, Pig, Xenopus laevis, Carp, Chimpanzee, Rhesus monkey, Gorilla, Orangutan, Xenopus tropicalis, Platypus 
免疫原	Synthetic peptide corresponding to a region between residue 250 and 300 of Human CREB (NP_604391.1).
ポジティブ・コントロール	Human breast carcinoma, colon carcinoma, metastatic lymph node, ovarian carcinoma, pancreatic islet cell tumor, prostate carcinoma, skin melanoma and stomach adenocarcinoma. Mouse renal cell carcinoma and teratoma.

製品の特性

製品の状態	Liquid
保存方法	Shipped at 4°C. Upon delivery aliquot and store at -20°C. Avoid freeze / thaw cycles.
バッファー	Preservative: 0.09% Sodium Azide Constituents: 0.1% BSA, Tris buffered saline
精製度	Immunogen affinity purified
ポリモノ	ポリクローナル
アイソタイプ	IgG

アプリケーション

Our [Abpromise guarantee](#) covers the use of **ab84757** in the following tested applications.

The application notes include recommended starting dilutions; optimal dilutions/concentrations should be determined by the end user.

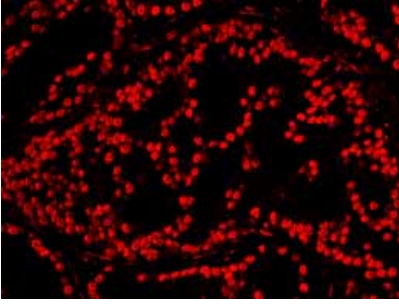
アプリ ケーショ ン	Abreviews	特記事項
------------------	-----------	------

IHC-P	1/100 - 1/500.	Epitope exposure is recommended. Epitope exposure with citrate buffer will enhance staining. Not yet tested in other applications. Optimal dilutions/concentrations should be determined by the end user.
-------	----------------	---

ターゲット情報

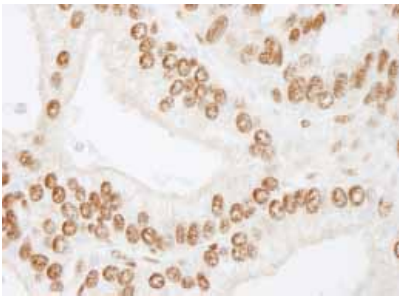
機能	This protein binds the cAMP response element (CRE), a sequence present in many viral and cellular promoters. CREB stimulates transcription on binding to the CRE. Transcription activation is enhanced by the TORC coactivators which act independently of Ser-133 phosphorylation. Implicated in synchronization of circadian rhythmicity.
関連疾患	Defects in CREB1 may be a cause of angiomatoid fibrous histiocytoma (AFH) [MIM:612160]. A distinct variant of malignant fibrous histiocytoma that typically occurs in children and adolescents and is manifest by nodular subcutaneous growth. Characteristic microscopic features include lobulated sheets of histiocyte-like cells intimately associated with areas of hemorrhage and cystic pseudovascular spaces, as well as a striking cuffing of inflammatory cells, mimicking a lymph node metastasis. Note=A chromosomal aberration involving CREB1 is found in a patient with angiomatoid fibrous histiocytoma. Translocation t(2;22)(q33;q12) with CREB1 generates a EWSR1/CREB1 fusion gene that is most common genetic abnormality in this tumor type.
配列類似性	Belongs to the bZIP family. Contains 1 bZIP domain. Contains 1 KID (kinase-inducible) domain.
翻訳後修飾	Stimulated by phosphorylation. Phosphorylation of both Ser-133 and Ser-142 in the SCN regulates the activity of CREB and participates in circadian rhythm generation. Phosphorylation of Ser-133 allows CREBBP binding (By similarity). Phosphorylated upon DNA damage, probably by ATM or ATR. Sumoylated by SUMO1. Sumoylation on Lys-304, but not on Lys-285, is required for nuclear localization of this protein. Sumoylation is enhanced under hypoxia, promoting nuclear localization and stabilization.
細胞内局在	Nucleus.

画像



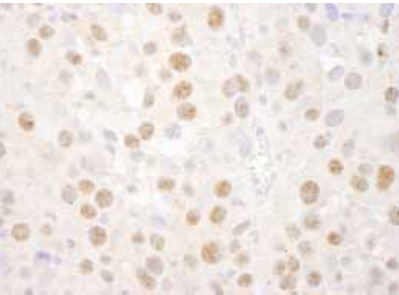
Immunohistochemistry (Formalin/PFA-fixed paraffin-embedded sections) - Anti-CREB antibody (ab84757)

ab84757, at 1/100 dilution, staining CREB in formalin-fixed, paraffin-embedded human prostate carcinoma by Immunohistochemistry using a Red-fluorescent goat anti-rabbit IgG highly cross-adsorbed Hilyte Plus™555 secondary antibody at a dilution of 1/100.



Immunohistochemistry (Formalin/PFA-fixed paraffin-embedded sections) - Anti-CREB antibody (ab84757)

ab84757, at 1/250 dilution, staining CREB in formalin-fixed, paraffin-embedded human prostate carcinoma by Immunohistochemistry using DAB staining.



Immunohistochemistry (Formalin/PFA-fixed paraffin-embedded sections) - Anti-CREB antibody (ab84757)

ab84757, at 1/250 dilution, staining CREB in formalin-fixed, paraffin-embedded mouse renal cell carcinoma by Immunohistochemistry using DAB staining.

Please note: All products are "FOR RESEARCH USE ONLY AND ARE NOT INTENDED FOR DIAGNOSTIC OR THERAPEUTIC USE"

Our Abpromise to you: Quality guaranteed and expert technical support

- Replacement or refund for products not performing as stated on the datasheet
- Valid for 12 months from date of delivery
- Response to your inquiry within 24 hours

- We provide support in Chinese, English, French, German, Japanese and Spanish
- Extensive multi-media technical resources to help you
- We investigate all quality concerns to ensure our products perform to the highest standards

If the product does not perform as described on this datasheet, we will offer a refund or replacement. For full details of the Abpromise, please visit <https://www.abcam.co.jp/abpromise> or contact our technical team.

Terms and conditions

- Guarantee only valid for products bought direct from Abcam or one of our authorized distributors