

Product datasheet

Anti-CNTFR antibody ab58560

1 References [画像数 2](#)

製品の概要

製品名	Anti-CNTFR antibody
製品の詳細	Goat polyclonal to CNTFR
由来種	Goat
特異性	This antibody is expected to recognise both reported isoforms (NP_671693.1; NP_001833.1).
アプリケーション	<b>適用あり:</b> WB
種交差性	<b>交差種:</b> Mouse, Rat, Human <b>交差が予測される動物種:</b> Chicken, Dog, Pufferfish, Zebrafish 
免疫原	Synthetic peptide corresponding to Human CNTFR aa 116-126 (internal sequence). Sequence: CRSNTYPKGFY  <a href="#">Run BLAST with</a> <a href="#">Run BLAST with</a>
ポジティブ・コントロール	Mouse Brain lysate.

製品の特性

製品の状態	Liquid
保存方法	Shipped at 4°C. Upon delivery aliquot and store at -20°C. Avoid freeze / thaw cycles.
バッファー	pH: 7.30 Preservative: 0.02% Sodium azide Constituents: 0.5% Tris buffered saline, 0.5% BSA
精製度	Immunogen affinity purified
ポリ/モノ	ポリクローナル
アイソタイプ	IgG

アプリケーション

Our [Abpromise guarantee](#) covers the use of **ab58560** in the following tested applications.

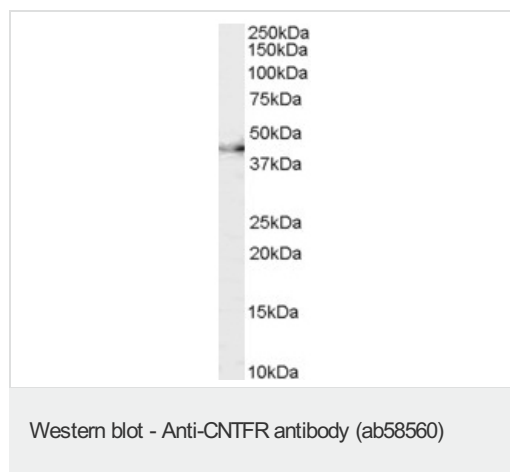
The application notes include recommended starting dilutions; optimal dilutions/concentrations should be determined by the end user.

アプリケーション	Abreviews	特記事項
WB		Use a concentration of 0.3 - 1 µg/ml. Detects a band of approximately 41 kDa (predicted molecular weight: 41 kDa).

## ターゲット情報

機能	Binds to CNTF. The alpha subunit provides the receptor specificity.
組織特異性	Nervous system and skeletal muscle.
配列類似性	Belongs to the type I cytokine receptor family. Type 3 subfamily. Contains 2 fibronectin type-III domains. Contains 1 Ig-like C2-type (immunoglobulin-like) domain.
ドメイン	The WSXWS motif appears to be necessary for proper protein folding and thereby efficient intracellular transport and cell-surface receptor binding.
細胞内局在	Cell membrane.

## 画像

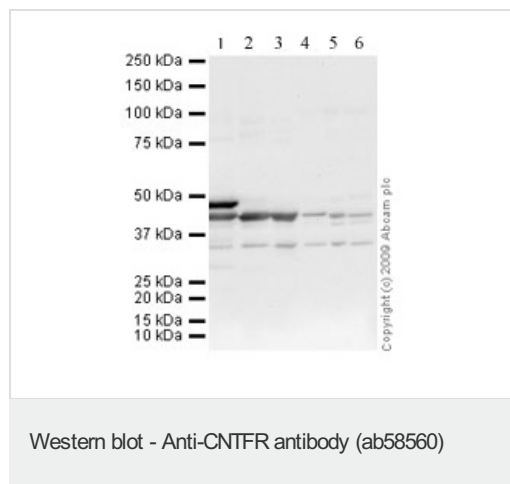


Anti-CNTFR antibody (ab58560) at 0.3 µg/ml + Mouse Brain lysate  
(35µg protein in RIPA buffer)

**Predicted band size:** 41 kDa

**Observed band size:** 41 kDa

Primary incubation was 1 hour. Detected by chemiluminescence.



**All lanes :** Anti-CNTFR antibody (ab58560) at 1 µg/ml

**Lane 1 :** Human skeletal muscle tissue lysate - total protein  
([ab29330](#)) at 20 µg

**Lane 2 :** Mouse skeletal muscle tissue lysate - total protein  
([ab29711](#)) at 20 µg

**Lane 3 :** Skeletal Muscle (Rat) Tissue Lysate - normal tissue  
([ab29376](#)) at 20 µg

**Lane 4 :** Human brain tissue lysate - total protein ([ab29466](#)) at 10  
µg

**Lane 5 :** Brain (Mouse) Tissue Lysate ([ab27253](#)) at 10 µg

**Lane 6 :** Brain (Rat) Tissue Lysate ([ab7942](#)) at 10 µg

## Secondary

**All lanes** : Rabbit polyclonal to Goat IgG - H&L - Pre-Adsorbed (HRP) ([ab65486](#)) at 1/3000 dilution

**Predicted band size:** 41 kDa

**Please note:** All products are "FOR RESEARCH USE ONLY AND ARE NOT INTENDED FOR DIAGNOSTIC OR THERAPEUTIC USE"

## Our Abpromise to you: Quality guaranteed and expert technical support

---

- Replacement or refund for products not performing as stated on the datasheet
- Valid for 12 months from date of delivery
- Response to your inquiry within 24 hours
- We provide support in Chinese, English, French, German, Japanese and Spanish
- Extensive multi-media technical resources to help you
- We investigate all quality concerns to ensure our products perform to the highest standards

If the product does not perform as described on this datasheet, we will offer a refund or replacement. For full details of the Abpromise, please visit <https://www.abcam.co.jp/abpromise> or contact our technical team.

## Terms and conditions

---

- Guarantee only valid for products bought direct from Abcam or one of our authorized distributors