


Product datasheet

Anti-CIB3 antibody ab70773

画像数 1

製品の概要

製品名	Anti-CIB3 antibody
製品の詳細	Rabbit polyclonal to CIB3
由来種	Rabbit
アプリケーション	適用あり: WB, ELISA
種交差性	交差種: Human 交差が予測される動物種: Mouse 
免疫原	Synthetic peptide derived from C-terminal of human CIB3
ポジティブ・コントロール	K562 cell extracts.

製品の特性

製品の状態	Liquid
保存方法	Shipped at 4°C. Upon delivery aliquot and store at -20°C. Avoid freeze / thaw cycles.
バッファー	Preservative: 0.02% Sodium Azide Constituents: 50% Glycerol, PBS (without Mg <sup>2+</sup> and Ca <sup>2+</sup> ), 150mM Sodium chloride, pH 7.4
精製度	Immunogen affinity purified
特記事項 (精製)	ab70773 was affinity-purified from rabbit antiserum by affinity-chromatography using epitope-specific immunogen.
ポリモノ	ポリクローナル
アイソタイプ	IgG

アプリケーション

Our [Abpromise guarantee](#) covers the use of **ab70773** in the following tested applications.

The application notes include recommended starting dilutions; optimal dilutions/concentrations should be determined by the end user.

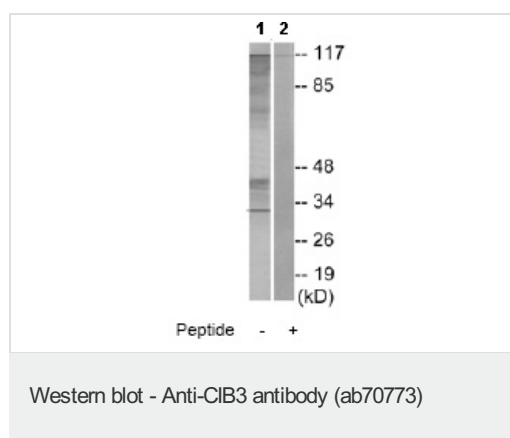
アプリケーション	Abreviews	特記事項
WB		1/500 - 1/1000. Detects a band of approximately 32 kDa (predicted molecular weight: 22 kDa).

アプリケーション	Abreviews	特記事項
ELISA		1/20000.

## ターゲット情報

**関連性** The exact function of CIB3 is unknown, however, the gene product shares a high degree of sequence similarity with DNA-dependent protein kinase catalytic subunit-interacting protein 2 in human and mouse, and like them may bind the catalytic subunit of DNA-dependent protein kinases.

## 画像



**All lanes :** Anti-CIB3 antibody (ab70773) at 1/500 dilution

**Lane 1 :** K562 cell lysate

**Lane 2 :** K562 cell lysate with immunising peptide at 10 µg

Lysates/proteins at 30 µg per lane.

**Predicted band size:** 22 kDa

**Observed band size:** 32 kDa

**Additional bands at:** 44 kDa, 70 kDa. We are unsure as to the identity of these extra bands.

**Please note:** All products are "FOR RESEARCH USE ONLY AND ARE NOT INTENDED FOR DIAGNOSTIC OR THERAPEUTIC USE"

## Our Abpromise to you: Quality guaranteed and expert technical support

- Replacement or refund for products not performing as stated on the datasheet
- Valid for 12 months from date of delivery
- Response to your inquiry within 24 hours
- We provide support in Chinese, English, French, German, Japanese and Spanish
- Extensive multi-media technical resources to help you
- We investigate all quality concerns to ensure our products perform to the highest standards

If the product does not perform as described on this datasheet, we will offer a refund or replacement. For full details of the Abpromise, please visit <https://www.abcam.co.jp/abpromise> or contact our technical team.

## Terms and conditions

---

- Guarantee only valid for products bought direct from Abcam or one of our authorized distributors