


Product datasheet

Anti-CDC42 binding protein kinase alpha antibody ab113710

画像数 2

製品の概要

製品名	Anti-CDC42 binding protein kinase alpha antibody
製品の詳細	Goat polyclonal to CDC42 binding protein kinase alpha
由来種	Goat
アプリケーション	適用あり: ELISA, IHC-P
種交差性	交差種: Human 交差が予測される動物種: Mouse, Rat 
免疫原	Synthetic peptide (SGEVRLRQLEQFI -C) corresponding to N terminal amino acids 2-14 of Human CDC42 binding protein kinase alpha. Run BLAST with Run BLAST with
ポジティブ・コントロール	Human Brain Cerebellum and Human Small Intestine Submucosal Plexus tissue.

製品の特性

製品の状態	Liquid
保存方法	Shipped at 4°C. Store at +4°C short term (1-2 weeks). Store at -20°C or -80°C. Avoid freeze / thaw cycle.
バッファー	pH: 7.30 Preservative: 0.02% Sodium azide Constituents: 98% Tris buffered saline, 0.5% BSA
精製度	Immunogen affinity purified
ポリ/モノ	ポリクローナル
アイソタイプ	IgG

アプリケーション

Our [Abpromise guarantee](#) covers the use of **ab113710** in the following tested applications.

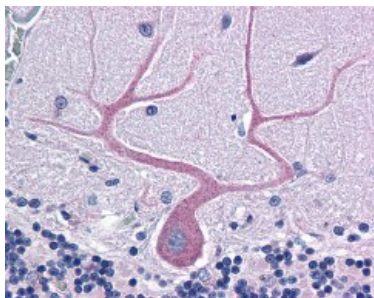
The application notes include recommended starting dilutions; optimal dilutions/concentrations should be determined by the end user.

アプリケーション	Abreviews	特記事項
ELISA		1/16000.
IHC-P		Use a concentration of 3.75 µg/ml.

ターゲット情報

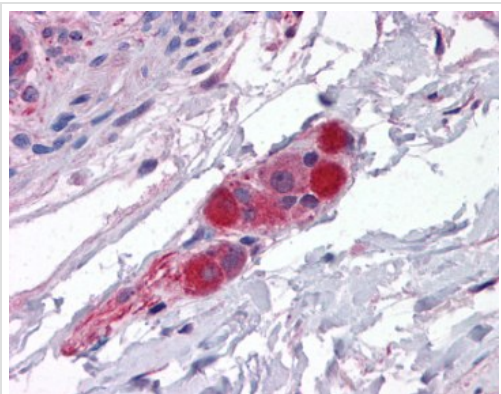
機能	May act as a downstream effector of CDC42 in cytoskeletal reorganization. Contributes to the actomyosin contractility required for cell invasion, through the regulation of MYPT1 and thus MLC2 phosphorylation.
組織特異性	Abundant in the heart, brain, skeletal muscle, kidney, and pancreas, with little or no expression in the lung and liver.
配列類似性	Belongs to the protein kinase superfamily. AGC Ser/Thr protein kinase family. DMPK subfamily. Contains 1 AGC-kinase C-terminal domain. Contains 1 CNH domain. Contains 1 CRIB domain. Contains 1 PH domain. Contains 1 phorbol-ester/DAG-type zinc finger. Contains 1 protein kinase domain.
細胞内局在	Cytoplasm. Displays a dispersed punctate distribution and concentrates along the cell periphery, especially at the leading edge and cell-cell junction. This concentration is PH-domain dependent.

画像



ab113710 at 3.75 µg/ml staining CDC42 binding protein kinase alpha in Formalin-Fixed, Paraffin-Embedded Human brain cerebellum tissue.

Immunohistochemistry (Formalin/PFA-fixed paraffin-embedded sections) - Anti-CDC42 binding protein kinase alpha antibody (ab113710)



ab113710 at 3.75 µg/ml staining CDC42 binding protein kinase alpha in Formalin-Fixed, Paraffin-Embedded Human small intestine, submucosal plexus tissue.

Immunohistochemistry (Formalin/PFA-fixed paraffin-embedded sections) - Anti-CDC42 binding protein kinase alpha antibody (ab113710)

Please note: All products are "FOR RESEARCH USE ONLY AND ARE NOT INTENDED FOR DIAGNOSTIC OR THERAPEUTIC USE"

Our Abpromise to you: Quality guaranteed and expert technical support

- Replacement or refund for products not performing as stated on the datasheet
- Valid for 12 months from date of delivery
- Response to your inquiry within 24 hours
- We provide support in Chinese, English, French, German, Japanese and Spanish
- Extensive multi-media technical resources to help you
- We investigate all quality concerns to ensure our products perform to the highest standards

If the product does not perform as described on this datasheet, we will offer a refund or replacement. For full details of the Abpromise, please visit <https://www.abcam.co.jp/abpromise> or contact our technical team.

Terms and conditions

- Guarantee only valid for products bought direct from Abcam or one of our authorized distributors