

Product datasheet

Anti-CD3 epsilon antibody [C363.29B] (PE/Cy5®) ab25531

1 References [画像数 1](#)

製品の概要

製品名	Anti-CD3 epsilon antibody [C363.29B] (PE/Cy5®)
製品の詳細	Rat monoclonal [C363.29B] to CD3 epsilon (PE/Cy5®)
由来種	Rat
標識	PE/Cy5®. Ex: 496nm, Em: 670nm
アプリケーション	適用あり: Flow Cyt, IP
種交差性	交差種: Mouse
免疫原	The details of the immunogen for this antibody are not available.
エピトープ	This antibody recognises an epitope on the 25kDa epsilon chain of the CD3/TCR complex.
特記事項	<p>This product or portions thereof is manufactured under license from Carnegie Mellon University under U.S. Patent Number 5,268,486 and related patents. Cy and CyDye are trademarks of GE Healthcare Limited.</p> <p>In the presence of Fc receptor-bearing accessory cells, this antibody can activate primed and naïve T cell in vitro. When immobilized it can also activate both normal T lymphocytes and cloned T cell lines provided the appropriate accessory signals are present. The antibody is cytolytic, is easily used for cell surface staining and is a good immunoprecipitating antibody. This antibody has shown to be useful in studies of in vitro depletion of CD3+ cells, and in vitro activation of T cells (accessory cells must be provided).</p>

製品の特性

製品の状態	Liquid
保存方法	Shipped at 4°C. Store at +4°C.
バッファー	Preservative: 0.09% Sodium Azide Constituents: 16% Sucrose, 0.20% Gelatin, PBS and stabilising agent.
精製度	IgG fraction
一次抗体 備考	In the presence of Fc receptor-bearing accessory cells, this antibody can activate primed and naïve T cell in vitro. When immobilized it can also activate both normal T lymphocytes and cloned T cell lines provided the appropriate accessory signals are present. The antibody is cytolytic, is easily used for cell surface staining and is a good immunoprecipitating antibody. This antibody has shown to be useful in studies of in vitro depletion of CD3+ cells, and in vitro activation of T cells (accessory cells must be provided).

ポリ/モノ	モノクローナル
クローン名	C363.29B
アイソタイプ	IgG2c
軽鎖の種類	kappa

アプリケーション

Our [Abpromise guarantee](#) covers the use of **ab25531** in the following tested applications.

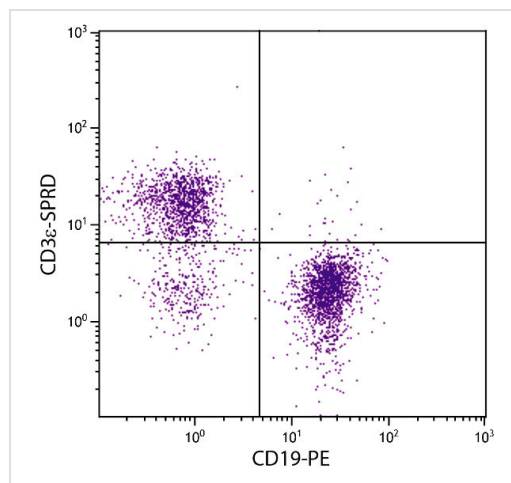
The application notes include recommended starting dilutions; optimal dilutions/concentrations should be determined by the end user.

アプリケーション	Abreviews	特記事項
Flow Cyt		Use 1µg for 10 ⁶ cells.
IP		Use at an assay dependent dilution.

ターゲット情報

機能	The CD3 complex mediates signal transduction.
配列類似性	Contains 1 Ig-like (immunoglobulin-like) domain. Contains 1 ITAM domain.
細胞内局在	Membrane.

画像



Flow Cytometry analysis of BALB/c mouse splenocytes stained with Anti-CD3 epsilon antibody [C363.29B] (PE/Cy5) ab25531 (1 µg/10⁶cells) and Rat Anti-Mouse CD19-PE.

Flow Cytometry - Anti-CD3 epsilon antibody
[C363.29B] (PE/Cy5®) (ab25531)

Please note: All products are "FOR RESEARCH USE ONLY AND ARE NOT INTENDED FOR DIAGNOSTIC OR THERAPEUTIC USE"

Our Abpromise to you: Quality guaranteed and expert technical support

- Replacement or refund for products not performing as stated on the datasheet
- Valid for 12 months from date of delivery
- Response to your inquiry within 24 hours

- We provide support in Chinese, English, French, German, Japanese and Spanish
- Extensive multi-media technical resources to help you
- We investigate all quality concerns to ensure our products perform to the highest standards

If the product does not perform as described on this datasheet, we will offer a refund or replacement. For full details of the Abpromise, please visit <https://www.abcam.co.jp/abpromise> or contact our technical team.

Terms and conditions

- Guarantee only valid for products bought direct from Abcam or one of our authorized distributors