

## Product datasheet

# Anti-CD105 antibody [2H6F11] (OC515) ab123610

### 画像数 1

#### 製品の概要

製品名	Anti-CD105 antibody [2H6F11] (OC515)
製品の詳細	Mouse monoclonal [2H6F11] to CD105 (OC515)
由来種	Mouse
標識	OC515. Ex: 405nm, Em: 515nm
アプリケーション	<b>適用あり:</b> Flow Cyt
種交差性	<b>交差種:</b> Human
免疫原	Human Endoglin fusion protein
ポジティブ・コントロール	Nalm 6 cells.
特記事項	OC515 (Abs/Em Max:405/518nm). Direct replacement for Pacific Orange®.

#### 製品の特性

製品の状態	Liquid
保存方法	Shipped at 4°C. Store at +4°C.
バッファー	pH: 7.20 Preservative: 0.09% Sodium azide Note: Contains antibody stabilizing buffer.
精製度	Immunogen affinity purified
ポリ/モノ	モノクローナル
クローン名	2H6F11
アイソタイプ	IgG1

#### アプリケーション

Our [Abpromise guarantee](#) covers the use of **ab123610** in the following tested applications.

The application notes include recommended starting dilutions; optimal dilutions/concentrations should be determined by the end user.

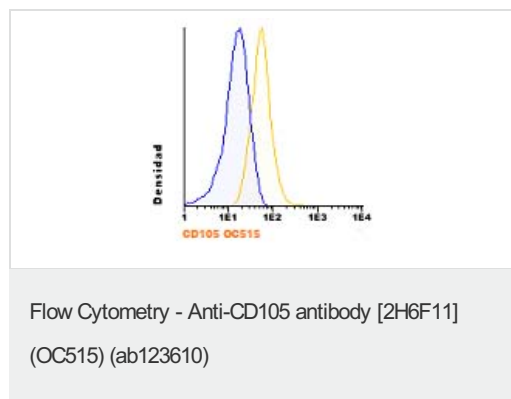
アプリケーション	Abreviews	特記事項
----------	-----------	------

アプリケーション	Abreviews	特記事項
Flow Cyt		Use 5µl for 10 <sup>6</sup> cells. <a href="#">ab126030</a> - Mouse monoclonal IgG1, is suitable for use as an isotype control with this antibody.

## ターゲット情報

機能	Major glycoprotein of vascular endothelium. May play a critical role in the binding of endothelial cells to integrins and/or other RGD receptors.
組織特異性	Endoglin is restricted to endothelial cells in all tissues except bone marrow.
関連疾患	Defects in ENG are the cause of hereditary hemorrhagic telangiectasia type 1 (HHT1) [MIM:187300, 108010]; also known as Osler-Rendu-Weber syndrome 1 (ORW1). HHT1 is an autosomal dominant multisystemic vascular dysplasia, characterized by recurrent epistaxis, muco-cutaneous telangiectases, gastro-intestinal hemorrhage, and pulmonary (PAVM), cerebral (CAVM) and hepatic arteriovenous malformations; all secondary manifestations of the underlying vascular dysplasia. Although the first symptom of HHT1 in children is generally nose bleed, there is an important clinical heterogeneity.
細胞内局在	Membrane.

## 画像



ab123610, at 5 µl/10<sup>6</sup> cells, staining CD105 in Nalm 6 cells by Flow Cytometry. Total cells were used for analysis.  
Isotype control (blue).

**Please note:** All products are "FOR RESEARCH USE ONLY AND ARE NOT INTENDED FOR DIAGNOSTIC OR THERAPEUTIC USE"

## Our Abpromise to you: Quality guaranteed and expert technical support

- Replacement or refund for products not performing as stated on the datasheet
- Valid for 12 months from date of delivery
- Response to your inquiry within 24 hours
- We provide support in Chinese, English, French, German, Japanese and Spanish
- Extensive multi-media technical resources to help you
- We investigate all quality concerns to ensure our products perform to the highest standards

If the product does not perform as described on this datasheet, we will offer a refund or replacement. For full details of the Abpromise, please visit <https://www.abcam.co.jp/abpromise> or contact our technical team.

## Terms and conditions

---

- Guarantee only valid for products bought direct from Abcam or one of our authorized distributors