

Product datasheet

Anti-Carma 1 / CARD11 antibody ab91463

1 References [画像数 2](#)

製品の概要

製品名	Anti-Carma 1 / CARD11 antibody
製品の詳細	Rabbit polyclonal to Carma 1 / CARD11
由来種	Rabbit
アプリケーション	適用あり: ICC/IF, WB, IP
種交差性	交差種: Human 交差が予測される動物種: Mouse, Rat, Rabbit, Horse, Cow, Dog, Chimpanzee, Rhesus monkey, Gorilla, Orangutan, Platypus, Elephant ▲
免疫原	Synthetic peptide corresponding to Human Carma 1/ CARD11 aa 275-325. Database link: NP_115791.3
ポジティブ・コントロール	Ramos cell lysate and K562 cell lysate
特記事項	Previously labelled as CARD11. Previously labelled as CARD11.

製品の特性

製品の状態	Liquid
保存方法	Shipped at 4°C. Upon delivery aliquot and store at -20°C. Avoid freeze / thaw cycles.
バッファー	Preservative: 0.09% Sodium azide Constituent: Tris citrate/phosphate
精製度	Immunogen affinity purified
ポリモノ	ポリクローナル
アイソタイプ	IgG

アプリケーション

Our [Abpromise guarantee](#) covers the use of **ab91463** in the following tested applications.

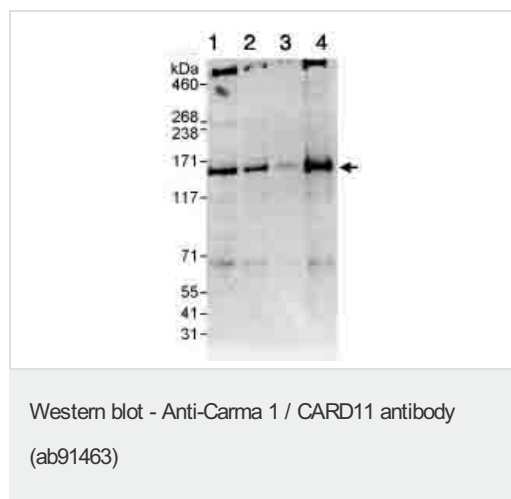
The application notes include recommended starting dilutions; optimal dilutions/concentrations should be determined by the end user.

アプリケーション	Abreviews	特記事項
ICC/IF		Use at an assay dependent concentration. PubMed: 23129749
WB		1/2000 - 1/10000. Predicted molecular weight: 133 kDa.
IP		Use at 2-5 µg/mg of lysate.

ターゲット情報

機能	Involved in the costimulatory signal essential for T-cell receptor (TCR)-mediated T-cell activation. Its binding to DPP4 induces T-cell proliferation and NF-kappa-B activation in a T-cell receptor/CD3-dependent manner. Activates NF-kappa-B via BCL10 and IKK. Stimulates the phosphorylation of BCL10.
組織特異性	Detected in adult peripheral blood leukocytes, thymus, spleen and liver. Also found in promyelocytic leukemia HL-60 cells, chronic myelogenous leukemia K562 cells, Burkitt's lymphoma Raji cells and colorectal adenocarcinoma SW480 cells. Not detected in HeLa S3, Molt-4, A549 and G431 cells.
配列類似性	Contains 1 CARD domain. Contains 1 guanylate kinase-like domain. Contains 1 PDZ (DHR) domain.
翻訳後修飾	Phosphorylation at Ser-559, Ser-644 and Ser-652 by PRKCBB leads to a shift from an inactive to an active form that activates the NF-kappa-B signaling.
細胞内局在	Cytoplasm. Membrane raft. Colocalized with DPP4 in membrane rafts.

画像



All lanes : Anti-Carma 1 / CARD11 antibody (ab91463) at 0.1 µg/ml

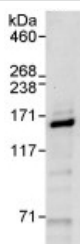
Lane 1 : Ramos cell lysate at 50 µg

Lane 2 : Ramos cell lysate at 15 µg

Lane 3 : Ramos cell lysate at 5 µg

Lane 4 : K562 cell lysate at 50 µg

Predicted band size: 133 kDa



Immunoprecipitation - Anti-Carma 1 / CARD11
antibody (ab91463)

Sample: whole cell lysate from Ramos cells (1 mg for IP, 20% of IP loaded) .

Antibody: ab91463 at 1 µg/ml for WB and at 10 µg/mg lysate for IP.

Detection: chemiluminescence with exposure times of 10 seconds.

Please note: All products are "FOR RESEARCH USE ONLY AND ARE NOT INTENDED FOR DIAGNOSTIC OR THERAPEUTIC USE"

Our Abpromise to you: Quality guaranteed and expert technical support

- Replacement or refund for products not performing as stated on the datasheet
- Valid for 12 months from date of delivery
- Response to your inquiry within 24 hours
- We provide support in Chinese, English, French, German, Japanese and Spanish
- Extensive multi-media technical resources to help you
- We investigate all quality concerns to ensure our products perform to the highest standards

If the product does not perform as described on this datasheet, we will offer a refund or replacement. For full details of the Abpromise, please visit <https://www.abcam.co.jp/abpromise> or contact our technical team.

Terms and conditions

- Guarantee only valid for products bought direct from Abcam or one of our authorized distributors