

Anti-C4orf14 antibody ab101348

1 Reference 画像数 1

医薬用外毒物

製品の概要

製品名	Anti-C4orf14 antibody
製品の詳細	Rabbit polyclonal to C4orf14
由来種	Rabbit
アプリケーション	適用あり: WB
種交差性	交差種: Human
免疫原	Recombinant fragment, corresponding to a region within amino acids 326-480 of Human C4orf14 (AAH04894).
ポジティブ・コントロール	A431 and Raji whole cell lysates.

製品の特性

製品の状態	Liquid
保存方法	Shipped at 4°C. Upon delivery aliquot and store at -20°C or -80°C. Avoid repeated freeze / thaw cycles.
バッファー	pH: 7.00 Preservative: 0.01% Thimerosal (merthiolate) Constituents: 20% Glycerol, 1.21% Tris, 0.75% Glycine
精製度	Immunogen affinity purified
ポリ/モノ	ポリクローナル
アイソタイプ	IgG

アプリケーション

Our [Abpromise guarantee](#) covers the use of **ab101348** in the following tested applications.

The application notes include recommended starting dilutions; optimal dilutions/concentrations should be determined by the end user.

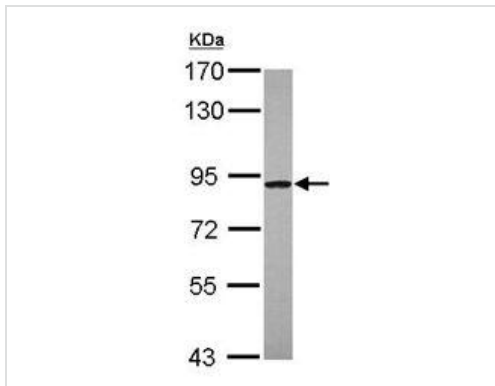
アプリケーション	Abreviews	特記事項
WB		1/500 - 1/3000. Predicted molecular weight: 78 kDa.

ターゲット情報

関連性

The exact function of C4orf14 is currently unknown

画像



Western blot - Anti-C4orf14 antibody (ab101348)

Anti-C4orf14 antibody (ab101348) at 1/500 dilution + Raji whole cell lysate at 30 µg

Predicted band size: 78 kDa

7.5% SDS PAGE

Please note: All products are "FOR RESEARCH USE ONLY AND ARE NOT INTENDED FOR DIAGNOSTIC OR THERAPEUTIC USE"

Our Abpromise to you: Quality guaranteed and expert technical support

- Replacement or refund for products not performing as stated on the datasheet
- Valid for 12 months from date of delivery
- Response to your inquiry within 24 hours
- We provide support in Chinese, English, French, German, Japanese and Spanish
- Extensive multi-media technical resources to help you
- We investigate all quality concerns to ensure our products perform to the highest standards

If the product does not perform as described on this datasheet, we will offer a refund or replacement. For full details of the Abpromise, please visit <https://www.abcam.co.jp/abpromise> or contact our technical team.

Terms and conditions

- Guarantee only valid for products bought direct from Abcam or one of our authorized distributors