

## Product datasheet

# Anti-C1r antibody ab71652

画像数 1

### 製品の概要

製品名	Anti-C1r antibody
製品の詳細	Rabbit polyclonal to C1r
由来種	Rabbit
アプリケーション	適用あり: WB
種交差性	交差種: Human 交差が予測される動物種: Cow, Non human primates
免疫原	Synthetic peptide conjugated to KLH derived from within residues 50 - 150 of Human C1r.Immunogen の所有権に関して(Peptide available as <a href="#">ab71651</a> .)
ポジティブ・コントロール	This antibody gave a positive signal in Human Plasma (Total Protein)

### 製品の特性

製品の状態	Liquid
保存方法	Shipped at 4°C. Store at +4°C short term (1-2 weeks). Upon delivery aliquot. Store at -20°C or -80°C. Avoid freeze / thaw cycle.
バッファー	Preservative: 0.02% Sodium Azide Constituents: 1% BSA, PBS, pH 7.4
精製度	Immunogen affinity purified
ポリ/モノ	ポリクローナル
アイソタイプ	IgG

### アプリケーション

Our [Abpromise guarantee](#) covers the use of **ab71652** in the following tested applications.

The application notes include recommended starting dilutions; optimal dilutions/concentrations should be determined by the end user.

アプリケーション	Abreviews	特記事項
----------	-----------	------

WB

### 追加情報

WB: Use at a concentration of 1 µg/ml. Detects a band of approximately 80, 90 kDa (predicted

molecular weight: 80 kDa).

Not yet tested in other applications.

Optimal dilutions/concentrations should be determined by the end user.

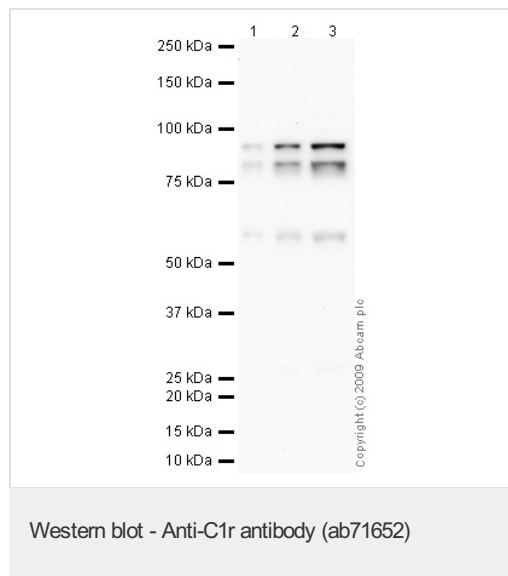
## ターゲット情報

**機能** C1r B chain is a serine protease that combines with C1q and C1s to form C1, the first component of the classical pathway of the complement system.

**配列類似性** Belongs to the peptidase S1 family.  
Contains 2 CUB domains.  
Contains 1 EGF-like domain.  
Contains 1 peptidase S1 domain.  
Contains 2 Sushi (CCP/SCR) domains.

**翻訳後修飾** The iron and 2-oxoglutarate dependent 3-hydroxylation of aspartate and asparagine is (R) stereospecific within EGF domains.

## 画像



**All lanes** : Anti-C1r antibody (ab71652) at 1 µg/ml

**Lane 1** : Human Plasma Total Protein Lysate at 2 µg

**Lane 2** : Human Plasma Total Protein Lysate at 5 µg

**Lane 3** : Human Plasma Total Protein Lysate at 10 µg

### Secondary

**All lanes** : Goat polyclonal to Rabbit IgG - H&L - Pre-Adsorbed (HRP) at 1/3000 dilution

Performed under reducing conditions.

**Predicted band size:** 80 kDa

**Observed band size:** 80 kDa

**Additional bands at:** 90 kDa (possible glycosylated form)

**Exposure time:** 1 minute

---

## **Our Abpromise to you: Quality guaranteed and expert technical support**

---

- Replacement or refund for products not performing as stated on the datasheet
- Valid for 12 months from date of delivery
- Response to your inquiry within 24 hours
  
- We provide support in Chinese, English, French, German, Japanese and Spanish
- Extensive multi-media technical resources to help you
- We investigate all quality concerns to ensure our products perform to the highest standards

If the product does not perform as described on this datasheet, we will offer a refund or replacement. For full details of the Abpromise, please visit <https://www.abcam.co.jp/abpromise> or contact our technical team.

## **Terms and conditions**

---

- Guarantee only valid for products bought direct from Abcam or one of our authorized distributors