

Product datasheet

Anti-Bone Sialoprotein antibody ab33022

2 References [画像数 2](#)

製品の概要

製品名	Anti-Bone Sialoprotein antibody
製品の詳細	Rabbit polyclonal to Bone Sialoprotein
由来種	Rabbit
アプリケーション	適用あり: ELISA, WB, IHC-P
種交差性	交差種: Human
免疫原	A region within synthetic peptide: SATTLGYGED ATPGTGYTGL AAIQLPKKAG DITNKATKEK ESDEEEEEEE, corresponding to N terminal amino acids 108-157 of Human Bone Sialoprotein Run BLAST with ExPASy Run BLAST with NCBI
ポジティブ・コントロール	HepG2 cell lysate.

製品の特性

製品の状態	Liquid
保存方法	Shipped at 4°C. Upon delivery aliquot and store at -20°C. Avoid freeze / thaw cycles.
バッファー	Preservative: 0.09% Sodium azide Constituents: 2% Sucrose, PBS
精製度	Protein A purified
ポリ/モノ	ポリクローナル
アイソタイプ	IgG

アプリケーション

Our [Abpromise guarantee](#) covers the use of **ab33022** in the following tested applications.

The application notes include recommended starting dilutions; optimal dilutions/concentrations should be determined by the end user.

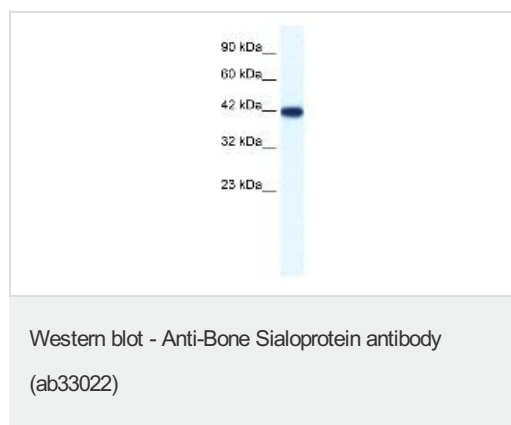
アプリケーション	Abreviews	特記事項
ELISA		1/62500.

アプリ ケーション	Abreviews	特記事項
WB		Use a concentration of 1.25 µg/ml. Detects a band of approximately 42 kDa (predicted molecular weight: 35 kDa). Good results were obtained when blocked with 5% non-fat dry milk in 0.05% PBS-T.
IHC-P		Use a concentration of 5 µg/ml. Perform heat mediated antigen retrieval with citrate buffer pH 6 before commencing with IHC staining protocol.

ターゲット情報

機能	Binds tightly to hydroxyapatite. Appears to form an integral part of the mineralized matrix. Probably important to cell-matrix interaction. Promotes Arg-Gly-Asp-dependent cell attachment.
翻訳後修飾	N-glycosylated; glycans consist of sialated and core-fucosylated bi-, tri- and tetraantennary chains. O-glycosylated at eight sites; mucin-type glycans contain Gal, GlcNAc, GalNAc and terminal NeuAc. Sulfated on either Tyr-313 or Tyr-314.
細胞内局在	Secreted.

画像



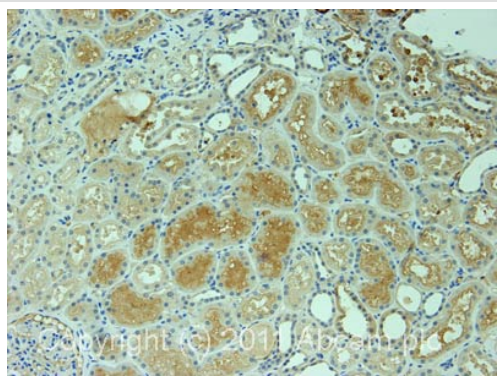
Anti-Bone Sialoprotein antibody (ab33022) at
1.25 µg/ml + HepG2 cell lysate

Secondary

HRP conjugated anti Rabbit IgG at 1/50000
dilution

Predicted band size: 35 kDa

Observed band size: 42 kDa



Immunohistochemistry (Formalin/PFA-fixed paraffin-embedded sections) - Anti-Bone Sialoprotein antibody (ab33022)

IHC image of ab33022 staining in normal human kidney formalin fixed paraffin embedded tissue section, performed on a Leica Bond™ system using the standard protocol F. The section was pre-treated using heat mediated antigen retrieval with sodium citrate buffer (pH6, epitope retrieval solution 1) for 20 mins. The section was then incubated with ab33022, 5µg/ml, for 15 mins at room temperature and detected using an HRP conjugated compact polymer system. DAB was used as the chromogen. The section was then counterstained with haematoxylin and mounted with DPX.

For other IHC staining systems (automated and non-automated) customers should optimize variable parameters such as antigen retrieval conditions, primary antibody concentration and antibody incubation times.

Please note: All products are "FOR RESEARCH USE ONLY AND ARE NOT INTENDED FOR DIAGNOSTIC OR THERAPEUTIC USE"

Our Abpromise to you: Quality guaranteed and expert technical support

- Replacement or refund for products not performing as stated on the datasheet
- Valid for 12 months from date of delivery
- Response to your inquiry within 24 hours
- We provide support in Chinese, English, French, German, Japanese and Spanish
- Extensive multi-media technical resources to help you
- We investigate all quality concerns to ensure our products perform to the highest standards

If the product does not perform as described on this datasheet, we will offer a refund or replacement. For full details of the Abpromise, please visit <https://www.abcam.co.jp/abpromise> or contact our technical team.

Terms and conditions

- Guarantee only valid for products bought direct from Abcam or one of our authorized distributors