

Product datasheet

Anti-Bcl10 antibody [EPR3174] ab108412

リコンビナント RabMAb[®]

画像数 2

製品の概要

製品名	Anti-Bcl10 antibody [EPR3174]
製品の詳細	Rabbit monoclonal [EPR3174] to Bcl10
由来種	Rabbit
アプリケーション	適用あり: WB, Flow Cyt 適用なし: ICC,IHC-P or IP
種交差性	交差種: Human
免疫原	Synthetic peptide within Human Bcl10 aa 50-150. The exact sequence is proprietary.
ポジティブ・コントロール	Daudi and Raji cell lysates; Raji cells
特記事項	Mouse, Rat: We have preliminary internal testing data to indicate this antibody may not react with these species. Please contact us for more information. Our RabMAb [®] technology is a patented hybridoma-based technology for making rabbit monoclonal antibodies. For details on our patents, please refer to RabMAb[®] patents This product is a recombinant rabbit monoclonal antibody.

製品の特性

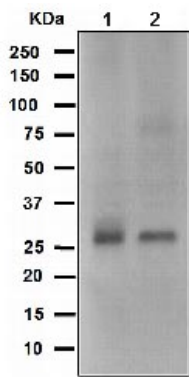
製品の状態	Liquid
保存方法	Shipped at 4°C. Store at -20°C. Stable for 12 months at -20°C.
バッファー	pH: 7.20 Preservative: 0.05% Sodium azide Constituents: 0.1% BSA, 40% Glycerol, 9.85% Tris glycine, 50% Tissue culture supernatant
精製度	Tissue culture supernatant
ポリ/モノ	モノクローナル
クローン名	EPR3174
アイソタイプ	IgG

アプリケーション

Our [Abpromise guarantee](#) covers the use of **ab108412** in the following tested applications.

The application notes include recommended starting dilutions; optimal dilutions/concentrations should be determined by the end user.

アプリケーション	Abreviews	特記事項
WB		1/1000 - 1/10000. Predicted molecular weight: 26 kDa.
Flow Cyt		1/500 - 1/1000. ab172730 - Rabbit monoclonal IgG, is suitable for use as an isotype control with this antibody.
追加情報		Is unsuitable for ICC,IHC-P or IP.
ターゲット情報		
機能		Promotes apoptosis, pro-caspase-9 maturation and activation of NF-kappa-B via NIK and IKK. May be an adapter protein between upstream TNFR1-TRADD-RIP complex and the downstream NIK-IKK-IKAP complex. Is a substrate for MALT1.
組織特異性		Ubiquitous.
関連疾患		Note=A chromosomal aberration involving BCL10 is recurrent in low-grade mucosa-associated lymphoid tissue (MALT lymphoma). Translocation t(1;14)(p22;q32). Although the BCL10/IgH translocation leaves the coding region of BCL10 intact, frequent BCL10 mutations could be attributed to the Ig somatic hypermutation mechanism resulting in nucleotide transitions. Note=Defects in BCL10 are involved in various types of cancer.
配列類似性		Contains 1 CARD domain.
翻訳後修飾		Phosphorylated. Phosphorylation results in dissociation from TRAF2 and binding to BIRC2/c-IAP2.
細胞内局在		Cytoplasm > perinuclear region. Membrane raft. Appears to have a perinuclear, compact and filamentous pattern of expression. Also found in the nucleus of several types of tumor cells. Colocalized with DPP4 in membrane rafts.
画像		



Western blot - Anti-Bcl10 antibody [EPR3174]
(ab108412)

All lanes : Anti-Bcl10 antibody [EPR3174]

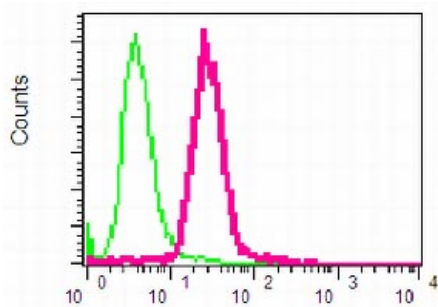
(ab108412) at 1/1000 dilution

Lane 1 : Daudi cell lysate

Lane 2 : Raji cell lysate

Lysates/proteins at 10 µg per lane.

Predicted band size: 26 kDa



Flow Cytometry - Anti-Bcl10 antibody [EPR3174]
(ab108412)

Flow cytometric analysis of Bcl10 in

permeabilized Raji cells, using ab108412 at a

1/500 dilution (red) or a Rabbit IgG (negative)

(green).

Please note: All products are "FOR RESEARCH USE ONLY AND ARE NOT INTENDED FOR DIAGNOSTIC OR THERAPEUTIC USE"

Our Abpromise to you: Quality guaranteed and expert technical support

- Replacement or refund for products not performing as stated on the datasheet
- Valid for 12 months from date of delivery
- Response to your inquiry within 24 hours
- We provide support in Chinese, English, French, German, Japanese and Spanish
- Extensive multi-media technical resources to help you
- We investigate all quality concerns to ensure our products perform to the highest standards

If the product does not perform as described on this datasheet, we will offer a refund or replacement. For full details of the Abpromise, please visit <https://www.abcam.co.jp/abpromise> or contact our technical team.

Terms and conditions

- Guarantee only valid for products bought direct from Abcam or one of our authorized distributors