

Product datasheet

Anti-Bcl-XL antibody [7B2.5] (FITC) ab26148

2 References [画像数 2](#)

製品の概要

製品名	Anti-Bcl-XL antibody [7B2.5] (FITC)
製品の詳細	Mouse monoclonal [7B2.5] to Bcl-XL (FITC)
由来種	Mouse
標識	FITC. Ex: 493nm, Em: 528nm
アプリケーション	適用あり: Flow Cyt, IHC-Fr, IP, WB
種交差性	交差種: Mouse, Rat, Human
免疫原	Recombinant full length protein corresponding to Human Bcl-XL. Database link: Q07817

特記事項

Abcam is committed to meeting high standards of ethical manufacturing and has decided to discontinue this product by June 2019 as it has been generated by the ascites method. We are sorry for any inconvenience this may cause.

製品の特性

製品の状態	Liquid
保存方法	Shipped at 4°C. Store at +4°C.
バッファー	Preservative: 0.1% Sodium Azide Constituents: PBS
精製度	Affinity purified
ポリ/モノ	モノクローナル
クローン名	7B2.5
アイソタイプ	IgG3

アプリケーション

Our [Abpromise guarantee](#) covers the use of **ab26148** in the following tested applications.

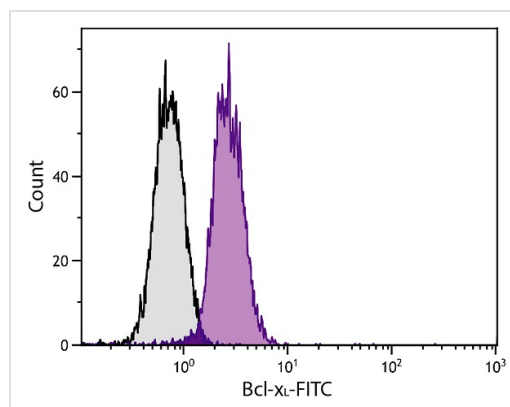
The application notes include recommended starting dilutions; optimal dilutions/concentrations should be determined by the end user.

アプリケーション	Abreviews	特記事項
Flow Cyt		Use 1µg for 10 ⁶ cells. ab91539 - Mouse monoclonal IgG3, is suitable for use as an isotype control with this antibody.
IHC-Fr		Use at an assay dependent concentration.
IP		Use at an assay dependent concentration.
WB		Use at an assay dependent concentration. Predicted molecular weight: 29 kDa.

ターゲット情報

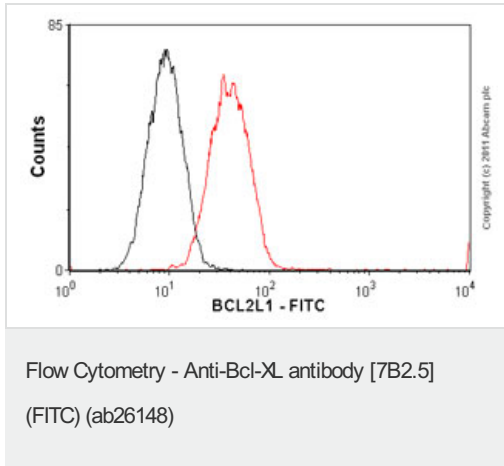
機能	Potent inhibitor of cell death. Inhibits activation of caspases (By similarity). Appears to regulate cell death by blocking the voltage-dependent anion channel (VDAC) by binding to it and preventing the release of the caspase activator, CYC1, from the mitochondrial membrane. Isoform Bcl-X(S) promotes apoptosis.
組織特異性	Bcl-X(S) is expressed at high levels in cells that undergo a high rate of turnover, such as developing lymphocytes. In contrast, Bcl-X(L) is found in tissues containing long-lived postmitotic cells, such as adult brain.
配列類似性	Belongs to the Bcl-2 family.
ドメイン	The BH4 motif is required for anti-apoptotic activity. The BH1 and BH2 motifs are required for both heterodimerization with other Bcl-2 family members and for repression of cell death.
翻訳後修飾	Proteolytically cleaved by caspases during apoptosis. The cleaved protein, lacking the BH4 motif, has pro-apoptotic activity.
細胞内局在	Mitochondrion membrane. Nucleus membrane. Mitochondrial membranes and perinuclear envelope.

画像



Flow Cytometry analysis of T cell leukemia cell line Jurkat intracellularly stained with Mouse Anti-Human Bcl-xL-FITC (ab26148) 1 µg/10⁶ cells (purple). Grey - Isotype Control, Mouse IgG3-FITC.

Flow Cytometry - Anti-Bcl-XL antibody [7B2.5]
(FITC) (ab26148)



Overlay histogram showing DU145 cells stained with ab26148 (red line). The cells were fixed with 4% paraformaldehyde (10 min) and then permeabilized with 0.1% PBS-Tween for 20 min. The cells were then incubated in 1x PBS / 10% normal goat serum / 0.3M glycine to block non-specific protein-protein interactions followed by the antibody (ab26148, 1µg/1x10⁶ cells) for 30 min at 22°C. Isotype control antibody (black line) was mouse IgG3 (1µg/1x10⁶ cells). Acquisition of >5,000 events was performed.

Please note: All products are "FOR RESEARCH USE ONLY AND ARE NOT INTENDED FOR DIAGNOSTIC OR THERAPEUTIC USE"

Our Abpromise to you: Quality guaranteed and expert technical support

- Replacement or refund for products not performing as stated on the datasheet
- Valid for 12 months from date of delivery
- Response to your inquiry within 24 hours
- We provide support in Chinese, English, French, German, Japanese and Spanish
- Extensive multi-media technical resources to help you
- We investigate all quality concerns to ensure our products perform to the highest standards

If the product does not perform as described on this datasheet, we will offer a refund or replacement. For full details of the Abpromise, please visit <https://www.abcam.co.jp/abpromise> or contact our technical team.

Terms and conditions

- Guarantee only valid for products bought direct from Abcam or one of our authorized distributors