

## Product datasheet

# Anti-BRD2 antibody ab3718

1 Abreviews 5 References 画像数 1

### 製品の概要

製品名	Anti-BRD2 antibody
製品の詳細	Goat polyclonal to BRD2
由来種	Goat
アプリケーション	適用あり: WB, ICC/IF
種交差性	交差種: Rat, Human 交差が予測される動物種: Mouse, Cow, Rhesus monkey, Gorilla
免疫原	Synthetic peptide (Human) - which represented a portion of human Bromodomain Containing 2 (BRD 2) between the putative nuclear localization signal and the ET domain.
ポジティブ・コントロール	HeLa cell extract.

### 製品の特性

製品の状態	Liquid
保存方法	Shipped at 4°C. Upon delivery aliquot and store at -20°C. Avoid freeze / thaw cycles.
バッファー	Preservative: 0.1% Sodium azide Constituents: 0.021% PBS, 1.764% Sodium citrate, 1.815% Tris
精製度	Immunogen affinity purified
ポリ/モノ	ポリクローナル
アイソタイプ	IgG

### アプリケーション

Our [Abpromise guarantee](#) covers the use of **ab3718** in the following tested applications.

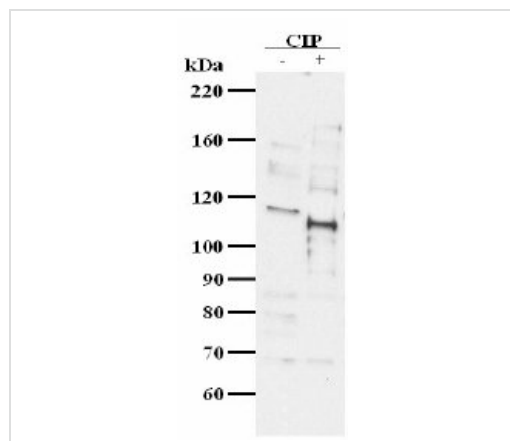
The application notes include recommended starting dilutions; optimal dilutions/concentrations should be determined by the end user.

アプリケーション	Abreviews	特記事項
WB		1/10000 - 1/40000. Predicted molecular weight: 110 kDa.
ICC/IF		Use at an assay dependent concentration. PubMed: 22215678

## ターゲット情報

機能	May play a role in spermatogenesis or folliculogenesis.
配列類似性	Contains 2 bromo domains. Contains 1 ET domain.
ドメイン	One bromodomain is sufficient for a partial interaction with histone H4 acetylated at 'Lys-13'.
細胞内局在	Nucleus.

## 画像



Western blot - Anti-BRD2 antibody (ab3718)

Sample: HeLa cell total RIPA extract (10µg)

Antibody: Affinity purified Goat anti-BRD 2 (ab3718) (diluted 1 / 20,000)

CIP: Calf Intestinal Phosphatase

Detection: ECL exposed for 1 minute.

Sample: HeLa cell total RIPA extract (10µg)

Antibody: Affinity purified Goat anti-BRD 2 (ab3718) (diluted 1 / 20,000)

CIP: Calf Intestinal Phosphatase  
Detection: ECL exposed for 1 minute.

**Please note:** All products are "FOR RESEARCH USE ONLY AND ARE NOT INTENDED FOR DIAGNOSTIC OR THERAPEUTIC USE"

## Our Abpromise to you: Quality guaranteed and expert technical support

- Replacement or refund for products not performing as stated on the datasheet
- Valid for 12 months from date of delivery
- Response to your inquiry within 24 hours
- We provide support in Chinese, English, French, German, Japanese and Spanish
- Extensive multi-media technical resources to help you
- We investigate all quality concerns to ensure our products perform to the highest standards

If the product does not perform as described on this datasheet, we will offer a refund or replacement. For full details of the Abpromise, please visit <https://www.abcam.co.jp/abpromise> or contact our technical team.

## Terms and conditions

- Guarantee only valid for products bought direct from Abcam or one of our authorized distributors