

## Product datasheet

# Anti-BMPR1A antibody ab59947

4 References [画像数 2](#)

### 製品の概要

製品名	Anti-BMPR1A antibody
製品の詳細	Rabbit polyclonal to BMPR1A
由来種	Rabbit
アプリケーション	<b>適用あり:</b> ELISA, WB
種交差性	<b>交差種:</b> Mouse, Human
免疫原	Synthetic peptide corresponding to Human BMPR1A aa 1-30 (N terminal) conjugated to Keyhole Limpet Haemocyanin (KLH). Database link: <a href="#">657</a>

### 製品の特性

製品の状態	Liquid
保存方法	Shipped at 4°C. Store at +4°C short term (1-2 weeks). Upon delivery aliquot. Store at -20°C long term.
バッファー	Preservative: 0.09% Sodium Azide Constituents: PBS
精製度	Protein G purified
特記事項 (精製)	ab59947 is purified through a protein G column, eluted with high and low pH buffers and neutralized immediately, followed by dialysis against PBS.
ポリ/モノ	ポリクローナル
アイソタイプ	IgG

### アプリケーション

Our [Abpromise guarantee](#) covers the use of **ab59947** in the following tested applications.

The application notes include recommended starting dilutions; optimal dilutions/concentrations should be determined by the end user.

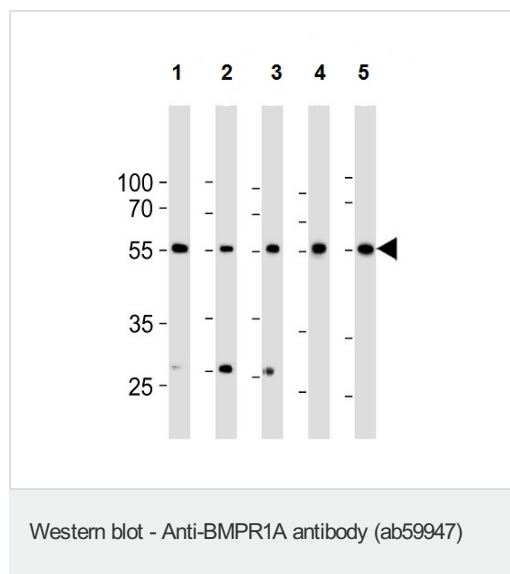
アプリケーション	Abreviews	特記事項
ELISA		1/1000.

アプリケーション	Abreviews	特記事項
WB		1/100 - 1/500. Detects a band of approximately 60 kDa (predicted molecular weight: 60 kDa).

## ターゲット情報

<b>機能</b>	On ligand binding, forms a receptor complex consisting of two type II and two type I transmembrane serine/threonine kinases. Type II receptors phosphorylate and activate type I receptors which autophosphorylate, then bind and activate SMAD transcriptional regulators. Receptor for BMP2, BMP4, GDF5 and GDF6. Positively regulates chondrocyte differentiation through GDF5 interaction. Mediates induction of adipogenesis by GDF6.
<b>組織特異性</b>	Highly expressed in skeletal muscle.
<b>関連疾患</b>	Juvenile polyposis syndrome Polyposis syndrome, mixed hereditary 2 A microdeletion of chromosome 10q23 involving BMPR1A and PTEN is a cause of chromosome 10q23 deletion syndrome, which shows overlapping features of the following three disorders: Bannayan-Zonana syndrome, Cowden disease and juvenile polyposis syndrome.
<b>配列類似性</b>	Belongs to the protein kinase superfamily. TKL Ser/Thr protein kinase family. TGFB receptor subfamily. Contains 1 GS domain. Contains 1 protein kinase domain.
<b>細胞内局在</b>	Membrane.

## 画像



**All lanes** : Anti-BMPR1A antibody (ab59947)  
at 1/1000 dilution

**Lane 1** : HeLa cell lysate

**Lane 2** : K562 cell lysate

**Lane 3** : MCF7 cell lysate

**Lane 4** : Human liver tissue lysate

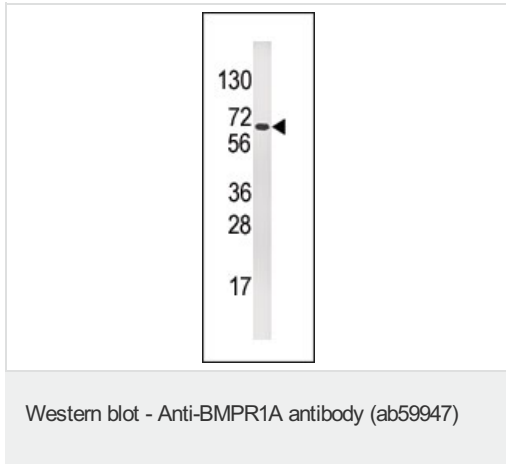
**Lane 5** : Mouse liver tissue lysate

Lysates/proteins at 35 µg per lane.

### Secondary

**All lanes** : HRP goat anti-rabbit (H+L) at  
1/1000 dilution

**Predicted band size:** 60 kDa



Anti-BMPR1A antibody (ab59947) at 1/100 dilution

**Predicted band size:** 60 kDa

**Observed band size:** 60 kDa

**Please note:** All products are "FOR RESEARCH USE ONLY AND ARE NOT INTENDED FOR DIAGNOSTIC OR THERAPEUTIC USE"

### Our Abpromise to you: Quality guaranteed and expert technical support

- Replacement or refund for products not performing as stated on the datasheet
- Valid for 12 months from date of delivery
- Response to your inquiry within 24 hours
- We provide support in Chinese, English, French, German, Japanese and Spanish
- Extensive multi-media technical resources to help you
- We investigate all quality concerns to ensure our products perform to the highest standards

If the product does not perform as described on this datasheet, we will offer a refund or replacement. For full details of the Abpromise, please visit <https://www.abcam.co.jp/abpromise> or contact our technical team.

### Terms and conditions

- Guarantee only valid for products bought direct from Abcam or one of our authorized distributors