

## Product datasheet

# Anti-BCA1 antibody ab112521

★★★★☆ 5 Abreviews 2 References 画像数 2

### 製品の概要

製品名	Anti-BCA1 antibody
製品の詳細	Rabbit polyclonal to BCA1
由来種	Rabbit
アプリケーション	適用あり: WB, ICC/IF
種交差性	交差種: Rat, Human 交差が予測される動物種: Mouse
免疫原	A synthetic peptide corresponding to a sequence at the C-terminal of Human BCA1.

### 法規制情報

**医薬用外毒物**

### 製品の特性

製品の状態	Liquid
保存方法	Shipped at 4°C. Store at +4°C short term (1-2 weeks). Upon delivery aliquot. Store at -20°C long term.
バッファー	Preservatives: 0.025% Thimerosal (merthiolate), 0.025% Sodium azide Constituents: 2.5% BSA, 0.45% Sodium chloride, 0.1% Dibasic monohydrogen sodium phosphate
精製度	Protein A purified
ポリ/モノ	ポリクローナル
アイソタイプ	IgG

### アプリケーション

Our [Abpromise guarantee](#) covers the use of **ab112521** in the following tested applications.

The application notes include recommended starting dilutions; optimal dilutions/concentrations should be determined by the end user.

アプリ ケーショ ン	Abreviews	特記事項
------------------	-----------	------

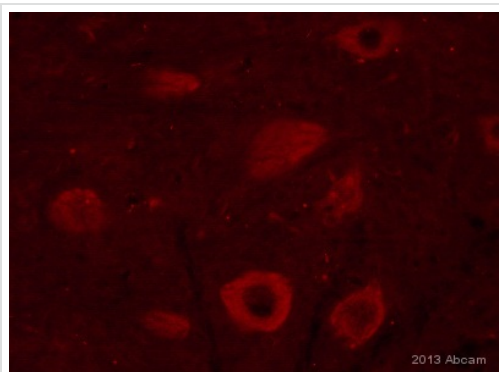
WB Use a concentration of 1 µg/ml. Predicted molecular weight: 13 kDa. Recombinant tested only. The detection limit for BCA1 is approximately 2.5ng/lane under non-reducing and reducing conditions.

ICC/IF ★★★★★ Use at an assay dependent concentration.

## ターゲット情報

機能	Chemotactic for B-lymphocytes but not for T-lymphocytes, monocytes and neutrophils. Does not induce calcium release in B-lymphocytes. Binds to BLR1/CXCR5.
組織特異性	Highest levels in liver, followed by spleen, lymph node, appendix and stomach. Low levels in salivary gland, mammary gland and fetal spleen.
配列類似性	Belongs to the intercrine alpha (chemokine CxC) family.
細胞内局在	Secreted.

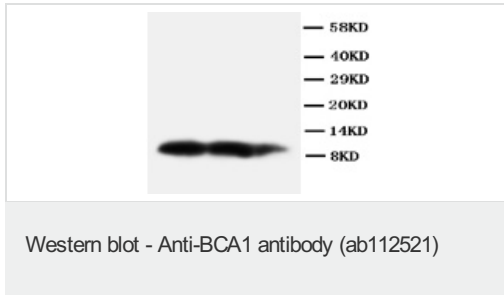
## 画像



Immunocytochemistry/ Immunofluorescence - Anti-BCA1 antibody (ab112521)

This image is courtesy of an anonymous Abreview

ab112521 staining BCA1 in Rat brain tissue sections by ICC/IF (Immunocytochemistry/immunofluorescence). Cells were fixed with paraformaldehyde, permeabilized with Triton X-100 1% in PBS and blocked with 2% BSA for 20 minutes at 21°C. Samples were incubated with primary antibody (1/1000 in PBS-T) for 12 hours. An Alexa Fluor®594-conjugated Donkey anti-rabbit polyclonal(1/1000) was used as the secondary antibody.



**All lanes :** Anti-BCA1 antibody (ab112521)

**Lane 1 :** Recombinant human BCA1 protein  
at 0.01  $\mu\text{g}$

**Lane 2 :** Recombinant human BCA1 protein  
at 0.005  $\mu\text{g}$

**Lane 3 :** Recombinant human BCA1 protein  
at 0.0025  $\mu\text{g}$

**Predicted band size:** 13 kDa

**Observed band size:** 11 kDa

**Please note:** All products are "FOR RESEARCH USE ONLY AND ARE NOT INTENDED FOR DIAGNOSTIC OR THERAPEUTIC USE"

### Our Abpromise to you: Quality guaranteed and expert technical support

- Replacement or refund for products not performing as stated on the datasheet
- Valid for 12 months from date of delivery
- Response to your inquiry within 24 hours
- We provide support in Chinese, English, French, German, Japanese and Spanish
- Extensive multi-media technical resources to help you
- We investigate all quality concerns to ensure our products perform to the highest standards

If the product does not perform as described on this datasheet, we will offer a refund or replacement. For full details of the Abpromise, please visit <https://www.abcam.co.jp/abpromise> or contact our technical team.

### Terms and conditions

- Guarantee only valid for products bought direct from Abcam or one of our authorized distributors