

Product datasheet

Anti-BANP antibody ab105404

画像数 3

製品の概要

製品名	Anti-BANP antibody
製品の詳細	Rabbit polyclonal to BANP
由来種	Rabbit
アプリケーション	適用あり: IHC-P, ICC/IF, WB
種交差性	交差種: Mouse, Rat, Human
免疫原	Synthetic peptide corresponding to a 14 amino acid internal sequence of Human BANP (NP_001167014).
ポジティブ・コントロール	Mouse kidney tissue lysate.

製品の特性

製品の状態	Liquid
保存方法	Shipped at 4°C. Store at +4°C short term (1-2 weeks). Store at -20°C or -80°C. Avoid freeze / thaw cycle.
バッファー	Preservative: 0.02% Sodium azide Constituent: 99% PBS
精製度	Immunogen affinity purified
特記事項(精製)	ab105404 is purified by affinity chromatography via a peptide column.
ポリ/モノ	ポリクローナル
アイソタイプ	IgG

アプリケーション

Our [Abpromise guarantee](#) covers the use of **ab105404** in the following tested applications.

The application notes include recommended starting dilutions; optimal dilutions/concentrations should be determined by the end user.

アプリケーション	Abreviews	特記事項
IHC-P		Use at an assay dependent concentration.
ICC/IF		Use a concentration of 20 µg/ml.

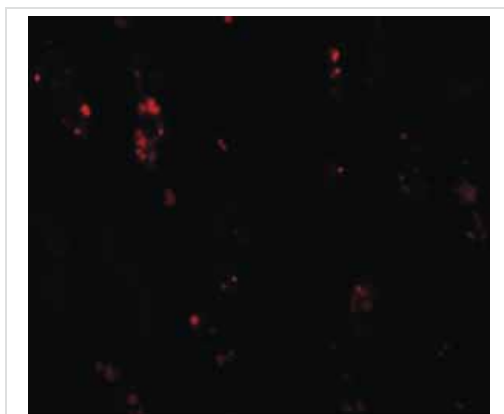
アプリケーション	Abreviews	特記事項
----------	-----------	------

WB Use a concentration of 1 - 2 µg/ml. Predicted molecular weight: 56 kDa.

ターゲット情報

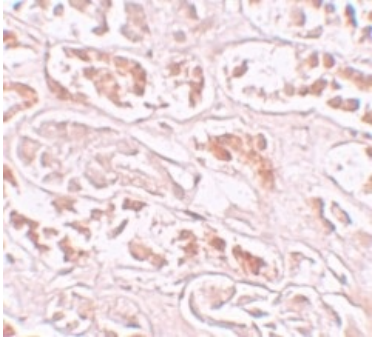
機能	Controls V(D)J recombination during T-cell development by repressing T-cell receptor (TCR) beta enhancer function. Binds to scaffold/matrix attachment region beta (S/MARbeta), an ATC-rich DNA sequence located upstream of the TCR beta enhancer. Represses cyclin D1 transcription by recruiting HDAC1 to its promoter, thereby diminishing H3K9ac, H3S10ph and H4K8ac levels. Promotes TP53 'Ser-15' phosphorylation and nuclear accumulation, which causes cell cycle arrest.
組織特異性	Down-regulated in breast cancer cell lines.
配列類似性	Belongs to the BANP/SMAR1 family. Contains 1 BEN domain.
細胞内局在	Nucleus.

画像



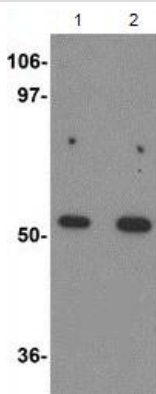
Immunofluorescence of BANP in Human kidney tissue with ab105404 at 20 ug/mL.

Immunocytochemistry/ Immunofluorescence - Anti-BANP antibody (ab105404)



Immunohistochemistry of Human kidney tissue with ab105404 at 10 µg/mL.

Immunohistochemistry (Formalin/PFA-fixed paraffin-embedded sections) - Anti-BANP antibody (ab105404)



Lane 1 : Anti-BANP antibody (ab105404) at 1 µg/ml

Lane 2 : Anti-BANP antibody (ab105404) at 2 µg/ml

All lanes : Mouse kidney tissue lysate

Lysates/proteins at 15 µg per lane.

Predicted band size: 56 kDa

Western blot - Anti-BANP antibody (ab105404)

Please note: All products are "FOR RESEARCH USE ONLY AND ARE NOT INTENDED FOR DIAGNOSTIC OR THERAPEUTIC USE"

Our Abpromise to you: Quality guaranteed and expert technical support

- Replacement or refund for products not performing as stated on the datasheet
- Valid for 12 months from date of delivery
- Response to your inquiry within 24 hours
- We provide support in Chinese, English, French, German, Japanese and Spanish
- Extensive multi-media technical resources to help you
- We investigate all quality concerns to ensure our products perform to the highest standards

If the product does not perform as described on this datasheet, we will offer a refund or replacement. For full details of the Abpromise, please visit <https://www.abcam.co.jp/abpromise> or contact our technical team.

Terms and conditions

- Guarantee only valid for products bought direct from Abcam or one of our authorized distributors