


Product datasheet

Anti-Apg10 antibody ab79316

画像数 1

製品の概要

製品名	Anti-Apg10 antibody
製品の詳細	Rabbit polyclonal to Apg10
由来種	Rabbit
アプリケーション	適用あり: WB
種交差性	交差種: Human 交差が予測される動物種: Mouse, Cow 
免疫原	Synthetic peptide conjugated to KLH derived from within residues 100 - 200 of Human Apg10.Immunogen の所有権に関して(Peptide available as ab90636 .)
ポジティブ・コントロール	This antibody gave a positive signal in the following whole cell lysates: DU 145; Raji.

製品の特性

製品の状態	Liquid
保存方法	Shipped at 4°C. Store at +4°C short term (1-2 weeks). Upon delivery aliquot. Store at -20°C or -80°C. Avoid freeze / thaw cycle.
バッファー	Preservative: 0.02% Sodium Azide Constituents: 1% BSA, PBS, pH 7.4
精製度	Immunogen affinity purified
ポリ/モノ	ポリクローナル
アイソタイプ	IgG

アプリケーション

Our [Abpromise guarantee](#) covers the use of **ab79316** in the following tested applications.

The application notes include recommended starting dilutions; optimal dilutions/concentrations should be determined by the end user.

アプリケーション	Abreviews	特記事項
WB		Use a concentration of 1 µg/ml. Detects a band of approximately 25 kDa (predicted molecular weight: 25 kDa).

ターゲット情報

機能

E2-like enzyme involved in autophagy. Acts as an E2-like enzyme that catalyzes the conjugation of ATG12 to ATG5. ATG12 conjugation to ATG5 is required for autophagy. Likely serves as an ATG5-recognition molecule. Not involved in ATG12 conjugation to ATG3 (By similarity). Plays a role in adenovirus-mediated cell lysis.

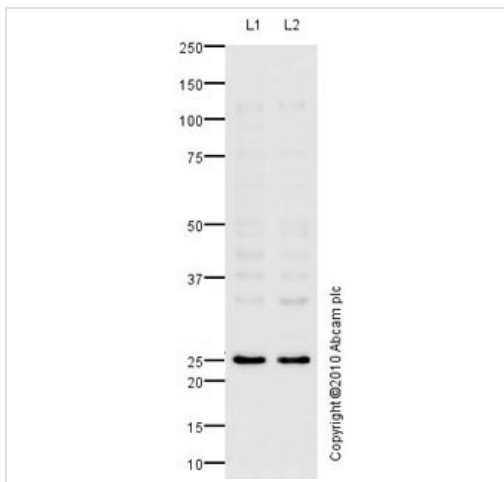
配列類似性

Belongs to the ATG10 family.

細胞内局在

Cytoplasm.

画像



Western blot - Anti-Apg10 antibody (ab79316)

All lanes : Anti-Apg10 antibody (ab79316) at 1 µg/ml

Lane 1 : DU 145 (Human prostate carcinoma cell line) Whole Cell Lysate

Lane 2 : Raji (Human Burkitt's lymphoma cell line) Whole Cell Lysate

Lysates/proteins at 10 µg per lane.

Secondary

All lanes : Goat polyclonal to Rabbit IgG - H&L - Pre-Adsorbed (HRP) at 1/3000 dilution

Predicted band size: 25 kDa

Observed band size: 25 kDa

Additional bands at: 34 kDa, 37 kDa, 42 kDa. We are unsure as to the identity of these extra bands.

Exposure time: 3 minutes

Please note: All products are "FOR RESEARCH USE ONLY AND ARE NOT INTENDED FOR DIAGNOSTIC OR THERAPEUTIC USE"

Our Abpromise to you: Quality guaranteed and expert technical support

- Replacement or refund for products not performing as stated on the datasheet
- Valid for 12 months from date of delivery
- Response to your inquiry within 24 hours
- We provide support in Chinese, English, French, German, Japanese and Spanish

- Extensive multi-media technical resources to help you
- We investigate all quality concerns to ensure our products perform to the highest standards

If the product does not perform as described on this datasheet, we will offer a refund or replacement. For full details of the Abpromise, please visit <https://www.abcam.co.jp/abpromise> or contact our technical team.

Terms and conditions

- Guarantee only valid for products bought direct from Abcam or one of our authorized distributors