

## Product datasheet

# Aldehyde Quantification Assay Kit (Colorimetric) ab112113

1 References [画像数 6](#)

### 製品の概要

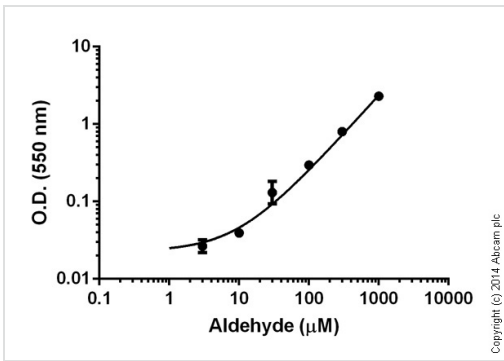
製品名	Aldehyde Quantification Assay Kit (Colorimetric)
サンプルの種類	Saliva, Plasma, Cell culture extracts, Adherent cells, Suspension cells
アッセイタイプ	Quantitative
種交差性	交差種: Other species, Mammals
製品の概要	<p>ab112113 Aldehyde Quantification Assay Kit (Colorimetric) uses a proprietary dye that generates a chromogenic product upon reacting with an aldehyde. Most of the existing aldehyde test methods are based on separations either by the tedious and expensive HPLC-MS or GC-MS. ab112113 provides a sensitive, one-step colorimetric method to detect as little as 1 nanomole of aldehyde in a 100 <math>\mu</math>L assay volume (10 <math>\mu</math>M). The assay can be performed in a convenient 96-well or 384-well microtiter-plate format and readily adapted to automation without a separation step. Its signal can be easily read with an absorbance microplate reader at 405 or 550 nm. This kit has been used for monitoring activities of oxidases that convert an amino group to an aldehyde group.</p> <p>Visit our <a href="#">FAQs page</a> for tips and troubleshooting.</p>
特記事項	ab112113 should be stored desiccated.

### 製品の特性

保存方法 Store at -20°C. Please refer to protocols.

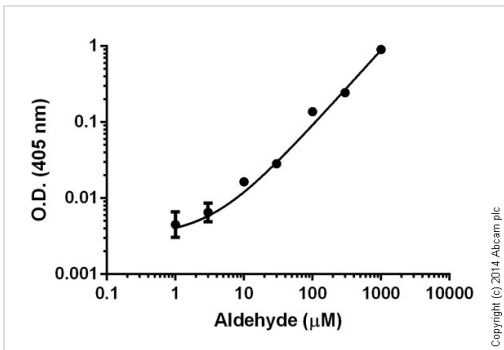
内容	200 tests
Aldehyde Standard	1 vial
Assay Buffer	1 x 10ml
Dilution Buffer	1 x 20ml
Yellow Indicator	2 units

### 画像



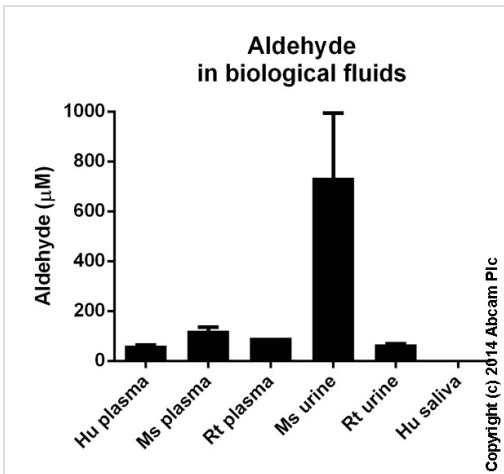
Standard curve: mean of duplicates (+/- SD) with background reads subtracted

Functional Studies - Aldehyde Quantification Assay  
Kit (Colorimetric) (ab112113)



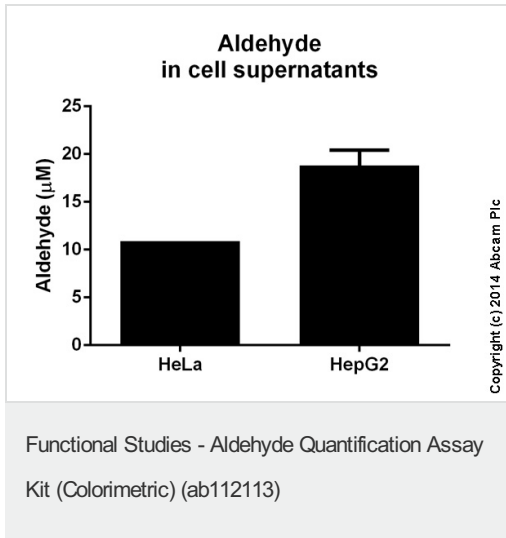
Standard curve: mean of duplicates (+/- SD) with background reads subtracted

Functional Studies - Aldehyde Quantification Assay  
Kit (Colorimetric) (ab112113)

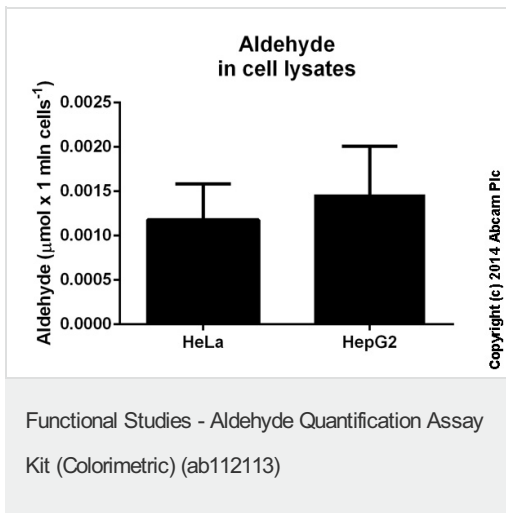


Aldehyde measured in biological fluids showing quantity (uM) per mL of tested sample. Values calculated based on the 550 nm Standard Curve. Samples diluted 1-10 fold.

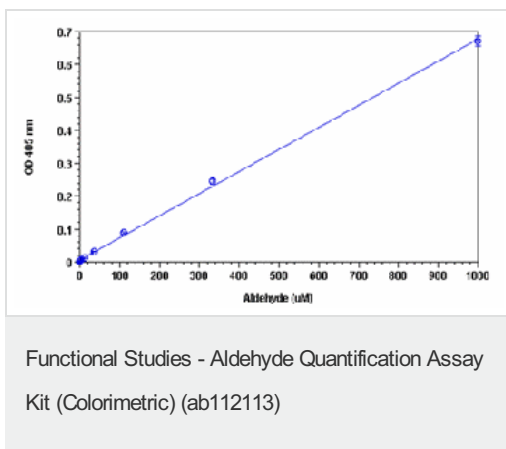
Functional Studies - Aldehyde Quantification Assay  
Kit (Colorimetric) (ab112113)



Aldehyde measured in cell culture supernatants showing quantity (μM) per mL of tested sample. Values calculated based on the 405 nm Standard Curve. Samples diluted 2 fold.



Aldehyde measured in cell lysates showing quantity (μM) per 1 mln cells. Values calculated based on the 550 nm Standard Curve. Samples with the concentration of 1.26e8 cells/mL (HeLa) and 1e8 cells/mL (HepG2) were used. Samples were diluted 3 fold.



Aldehyde dose response was measured in a 96-well black plate with ab112113. As low as 10 μM (1 nanomol/well) of aldehyde can be detected with 30 minutes incubation (n=3). Standard curve was read at 405 nm.

**Please note:** All products are "FOR RESEARCH USE ONLY AND ARE NOT INTENDED FOR DIAGNOSTIC OR THERAPEUTIC USE"

- Replacement or refund for products not performing as stated on the datasheet
- Valid for 12 months from date of delivery
- Response to your inquiry within 24 hours
  
- We provide support in Chinese, English, French, German, Japanese and Spanish
- Extensive multi-media technical resources to help you
- We investigate all quality concerns to ensure our products perform to the highest standards

If the product does not perform as described on this datasheet, we will offer a refund or replacement. For full details of the Abpromise, please visit <https://www.abcam.co.jp/abpromise> or contact our technical team.

### **Terms and conditions**

---

- Guarantee only valid for products bought direct from Abcam or one of our authorized distributors