


Product datasheet

Anti-Acid Phosphatase 2 antibody ab85719

画像数 1

製品の概要

製品名	Anti-Acid Phosphatase 2 antibody
製品の詳細	Goat polyclonal to Acid Phosphatase 2
由来種	Goat
アプリケーション	適用あり: ELISA, IHC-P
種交差性	交差種: Human 交差が予測される動物種: Mouse, Rat, Dog, Cynomolgus monkey, Orangutan 
免疫原	Synthetic peptide: C-QNETRQTPEYQN , corresponding to internal sequence amino acids 166-177 of Human Acid Phosphatase 2 Run BLAST with Run BLAST with
ポジティブ・コントロール	Human prostate tissue.

製品の特性

製品の状態	Liquid
保存方法	Shipped at 4°C. Upon delivery aliquot and store at -20°C. Avoid freeze / thaw cycles.
バッファー	Preservative: 0.02% Sodium Azide Constituents: 0.5% BSA, Tris buffered saline, pH 7.3
精製度	Immunogen affinity purified
ポリ/モノ	ポリクローナル
アイソタイプ	IgG

アプリケーション

Our [Abpromise guarantee](#) covers the use of **ab85719** in the following tested applications.

The application notes include recommended starting dilutions; optimal dilutions/concentrations should be determined by the end user.

アプリケーション	Abreviews	特記事項
ELISA		1/16000.

アプリケーション	Abreviews	特記事項
IHC-P		Use a concentration of 5 µg/ml.

ターゲット情報

関連疾患

Defects in ACP2 are a cause of acid phosphatase deficiency (ACPHD) [MIM:200950]. The clinical features are intermittent vomiting, hypotonia, lethargy, opisthotonos, terminal bleeding, and death in early infancy. Lysosomal acid phosphatase is deficient in cultured fibroblasts and multiple tissues.

配列類似性

Belongs to the histidine acid phosphatase family.

翻訳後修飾

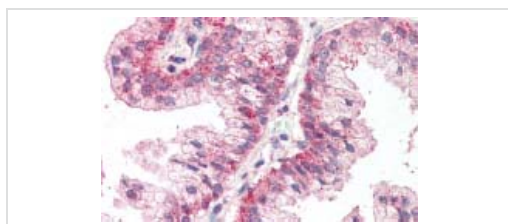
The membrane-bound form is converted to the soluble form by sequential proteolytic processing. First, the C-terminal cytoplasmic tail is removed. Cleavage by a lysosomal protease releases the soluble form in the lysosome lumen.

N-glycosylated. The intermediates formed during enzymatic deglycosylation suggest that all eight predicted N-glycosylation sites are used.

細胞内局在

Lysosome membrane. Lysosome lumen. The soluble form arises by proteolytic processing of the membrane-bound form.

画像



ab85719, at 5µg/ml, staining Acid Phosphatase 2 in formalin-fixed, paraffin-embedded Human prostate tissue by Immunohistochemistry.

Immunohistochemistry (Formalin/PFA-fixed paraffin-embedded sections) - Anti-Acid Phosphatase 2 antibody (ab85719)

Please note: All products are "FOR RESEARCH USE ONLY AND ARE NOT INTENDED FOR DIAGNOSTIC OR THERAPEUTIC USE"

Our Abpromise to you: Quality guaranteed and expert technical support

- Replacement or refund for products not performing as stated on the datasheet
- Valid for 12 months from date of delivery
- Response to your inquiry within 24 hours
- We provide support in Chinese, English, French, German, Japanese and Spanish
- Extensive multi-media technical resources to help you
- We investigate all quality concerns to ensure our products perform to the highest standards

If the product does not perform as described on this datasheet, we will offer a refund or replacement. For full details of the Abpromise,

please visit <https://www.abcam.co.jp/abpromise> or contact our technical team.

Terms and conditions

- Guarantee only valid for products bought direct from Abcam or one of our authorized distributors