

Product datasheet

Anti-ATTY antibody ab103992

画像数 2

製品の概要

製品名	Anti-ATTY antibody
製品の詳細	Rabbit polyclonal to ATTY
由来種	Rabbit
アプリケーション	適用あり: WB, IHC-P
種交差性	交差種: Human
免疫原	Synthetic peptide conjugated to KLH, corresponding to a region within internal sequence amino acids 285-315 of Human ATTY (NP_000344).
ポジティブ・コントロール	K562 cell line lysates. Human hepatocarcinoma tissue.

製品の特性

製品の状態	Liquid
保存方法	Shipped at 4°C. Store at 4°C (up to 6 months). Store at -20°C long term.
バッファー	Preservative: 0.09% Sodium Azide Constituents: PBS
精製度	Immunogen affinity purified
特記事項(精製)	ab103992 is antibody is purified through a protein A column, followed by peptide affinity purification.
ポリ/モノ	ポリクローナル
アイソタイプ	IgG

アプリケーション

Our [Abpromise guarantee](#) covers the use of **ab103992** in the following tested applications.

The application notes include recommended starting dilutions; optimal dilutions/concentrations should be determined by the end user.

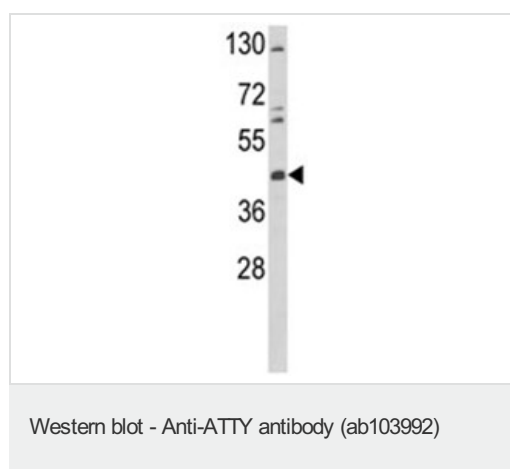
アプリケーション	Abreviews	特記事項
WB		1/100 - 1/500. Predicted molecular weight: 50 kDa.

アプリケーション	Abreviews	特記事項
IHC-P		1/50 - 1/100. Perform heat mediated antigen retrieval with citrate buffer pH 6 before commencing with IHC staining protocol.

ターゲット情報

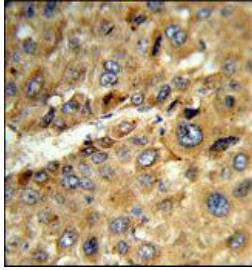
機能	Transaminase involved in tyrosine breakdown. Converts tyrosine to p-hydroxyphenylpyruvate. Can catalyze the reverse reaction, using glutamic acid, with 2-oxoglutarate as cosubstrate (in vitro). Has no transaminase activity towards phenylalanine.
パスウェイ	Amino-acid degradation; L-phenylalanine degradation; acetoacetate and fumarate from L-phenylalanine: step 2/6.
関連疾患	Defects in TAT are the cause of tyrosinemia type 2 (TYRO2) [MIM:276600]; also known as Richner-Hanhart syndrome. TYRO2 is an inborn error of metabolism characterized by elevations of tyrosine in the blood and urine, and oculocutaneous manifestations. Typical features include palmoplantar keratosis, painful corneal ulcers, and mental retardation.
配列類似性	Belongs to the class-I pyridoxal-phosphate-dependent aminotransferase family.

画像



Anti-ATTY antibody (ab103992) at 1/100 dilution + K562 cell line lysates at 35 µg

Predicted band size: 50 kDa



ab103992 at 1/50 dilution staining ATTY by immunohistochemistry in formalin fixed and paraffin embedded Human hepatocarcinoma followed by peroxidase conjugation of the secondary antibody and DAB staining

Immunohistochemistry (Formalin/PFA-fixed paraffin-embedded sections) - Anti-ATTY antibody (ab103992)

Please note: All products are "FOR RESEARCH USE ONLY AND ARE NOT INTENDED FOR DIAGNOSTIC OR THERAPEUTIC USE"

Our Abpromise to you: Quality guaranteed and expert technical support

- Replacement or refund for products not performing as stated on the datasheet
- Valid for 12 months from date of delivery
- Response to your inquiry within 24 hours
- We provide support in Chinese, English, French, German, Japanese and Spanish
- Extensive multi-media technical resources to help you
- We investigate all quality concerns to ensure our products perform to the highest standards

If the product does not perform as described on this datasheet, we will offer a refund or replacement. For full details of the Abpromise, please visit <https://www.abcam.co.jp/abpromise> or contact our technical team.

Terms and conditions

- Guarantee only valid for products bought direct from Abcam or one of our authorized distributors