

## Product datasheet

# Anti-AP1S1 antibody ab103365

### 画像数 1

#### 製品の概要

製品名	Anti-AP1S1 antibody
製品の詳細	Rabbit polyclonal to AP1S1
由来種	Rabbit
アプリケーション	適用あり: WB
種交差性	交差種: Human
免疫原	Synthetic peptide conjugated to KLH, corresponding to a region within N terminal amino acids 15-45 of Human AP1S1
ポジティブ・コントロール	MDA-MB231 cell line lysates

#### 製品の特性

製品の状態	Liquid
保存方法	Shipped at 4°C. Store at 4°C (up to 6 months). Store at -20°C long term.
バッファー	Preservative: 0.09% Sodium Azide Constituents: PBS
精製度	Immunogen affinity purified
特記事項(精製)	This antibody is purified through a protein A column, followed by peptide affinity purification.
ポリ/モノ	ポリクローナル
アイソタイプ	IgG

#### アプリケーション

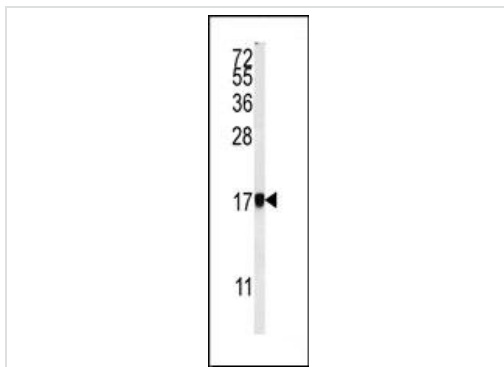
Our [Abpromise guarantee](#) covers the use of **ab103365** in the following tested applications.

The application notes include recommended starting dilutions; optimal dilutions/concentrations should be determined by the end user.

アプリケーション	Abreviews	特記事項
WB		1/100 - 1/500. Predicted molecular weight: 19 kDa.

<b>機能</b>	Subunit of clathrin-associated adaptor protein complex 1 that plays a role in protein sorting in the late-Golgi/trans-Golgi network (TGN) and/or endosomes. The AP complexes mediate both the recruitment of clathrin to membranes and the recognition of sorting signals within the cytosolic tails of transmembrane cargo molecules.
<b>組織特異性</b>	Widely expressed.
<b>配列類似性</b>	Belongs to the adaptor complexes small subunit family.
<b>細胞内局在</b>	Golgi apparatus. Cytoplasmic vesicle membrane. Membrane > clathrin-coated pit. Component of the coat surrounding the cytoplasmic face of coated vesicles located at the Golgi complex.

## 画像



Western blot - Anti-AP1S1 antibody (ab103365)

Anti-AP1S1 antibody (ab103365) at 1/100 dilution + MDA-MB231 cell line lysate at 35 µg

**Predicted band size:** 19 kDa

**Please note:** All products are "FOR RESEARCH USE ONLY AND ARE NOT INTENDED FOR DIAGNOSTIC OR THERAPEUTIC USE"

## Our Abpromise to you: Quality guaranteed and expert technical support

- Replacement or refund for products not performing as stated on the datasheet
- Valid for 12 months from date of delivery
- Response to your inquiry within 24 hours
- We provide support in Chinese, English, French, German, Japanese and Spanish
- Extensive multi-media technical resources to help you
- We investigate all quality concerns to ensure our products perform to the highest standards

If the product does not perform as described on this datasheet, we will offer a refund or replacement. For full details of the Abpromise, please visit <https://www.abcam.co.jp/abpromise> or contact our technical team.

## Terms and conditions

- Guarantee only valid for products bought direct from Abcam or one of our authorized distributors