

### Rabbit Anti-Rat IgG H&L (HRP) ab102172

[3 References](#) [画像数 1](#)

#### 製品の概要

製品名	Rabbit Anti-Rat IgG H&L (HRP)
由来種	Rabbit
ターゲット生物種	Rat
特異性	By immunoelectrophoresis and ELISA this antibody reacts specifically with rat IgG and with light chains common to other rat immunoglobulins. No antibody was detected against non-immunoglobulin serum proteins. This antibody may cross react with IgG from other species.
アプリケーション	<b>適用あり:</b> IHC-P, ICC, ELISA, WB
標識	HRP

#### 製品の特性

製品の状態	Liquid
保存方法	Shipped at 4°C. Store at +4°C.
バッファー	pH: 6.8 Constituents: 0.2% BSA, 0.05% CMIT/MIT based preservative
精製度	Immunogen affinity purified
特記事項 (精製)	This antibody was isolated by affinity chromatography using antigen coupled to agarose beads and conjugated to HRP.
ポリ/モノ	ポリクローナル
アイソタイプ	IgG
特記事項	Part of the <b>AbExcel</b> range.

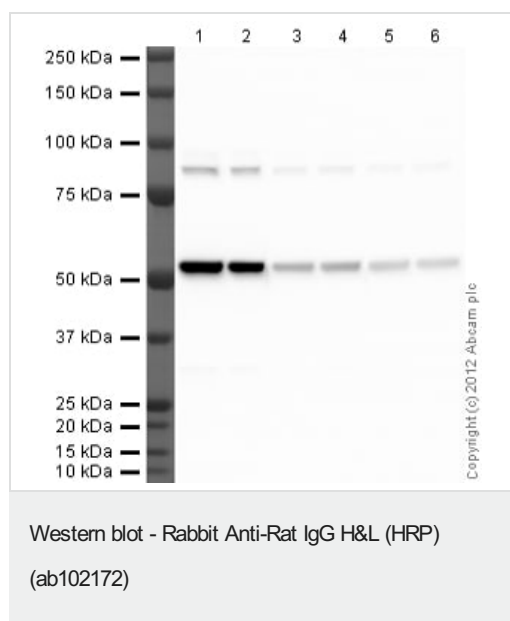
#### アプリケーション

**The Abpromise guarantee** **Abpromise保証は、** 次のテスト済みアプリケーションにおけるab102172の使用に適用されず  
アプリケーションノートには、推奨の開始希釈率がありますが、適切な希釈率につきましてはご検討ください。

アプリケーション	Abreviews	特記事項
IHC-P		1/200 - 1/5000.

アプリケーション	Abreviews	特記事項
ICC		1/200 - 1/5000.
ELISA		1/10000 - 1/100000. (as primary)
WB		1/2000 - 1/20000. (Colorimetric: 1/5000 - 1/30000, Chemiluminescent: 1/10000 - 1/50000).

## 画像



**Lane 1** : Anti-Tubulin antibody [YL 1/2] - Loading Control (**ab6160**) at 1 µg/ml (Anti-Tubulin antibody [YL 1/2] - Loading Control)

**Lanes 2-6** : Anti-Tubulin antibody [YL 1/2] - Loading Control (**ab6160**) at 1 µg/ml

**All lanes** : HeLa (Human epithelial carcinoma cell line) Whole Cell Lysate

Lysates/proteins at 20 µg per lane.

### Secondary

**Lanes 1-2** : Rabbit Anti-Rat IgG H&L (HRP) (ab102172) at 1/2000 dilution (Rabbit polyclonal Secondary Antibody to Rat IgG - H&L (HRP))

**Lanes 3-4** : Rabbit Anti-Rat IgG H&L (HRP) (ab102172) at 1/10000 dilution (Rabbit polyclonal Secondary Antibody to Rat IgG - H&L (HRP))

**Lane 5** : Goat polyclonal to RUNX2 (**ab102712**) at 1/20000 dilution (Rabbit polyclonal Secondary Antibody to Rat IgG - H&L (HRP))

**Lane 6** : Rabbit Anti-Rat IgG H&L (HRP) (ab102172) at 1/20000 dilution (Rabbit polyclonal Secondary Antibody to Rat IgG - H&L (HRP))

Developed using the ECL technique.

Performed under reducing conditions.

**Observed band size:** 52 kDa

**Please note:** All products are "FOR RESEARCH USE ONLY. NOT FOR USE IN DIAGNOSTIC PROCEDURES"

## **Our Abpromise to you: Quality guaranteed and expert technical support**

---

- Replacement or refund for products not performing as stated on the datasheet
- Valid for 12 months from date of delivery
- Response to your inquiry within 24 hours
  
- We provide support in Chinese, English, French, German, Japanese and Spanish
- Extensive multi-media technical resources to help you
- We investigate all quality concerns to ensure our products perform to the highest standards

If the product does not perform as described on this datasheet, we will offer a refund or replacement. For full details of the Abpromise, please visit <https://www.abcam.co.jp/abpromise> or contact our technical team.

## **Terms and conditions**

---

- Guarantee only valid for products bought direct from Abcam or one of our authorized distributors