

# Rabbit Anti-Mouse IgG H&L (Alkaline Phosphatase) ab97043

[3 References](#) [画像数 1](#)

### 製品の概要

製品名	Rabbit Anti-Mouse IgG H&L (Alkaline Phosphatase)
由来種	Rabbit
ターゲット生物種	Mouse
特異性	By immunoelectrophoresis and ELISA this antibody reacts specifically with mouse IgG and with light chains common to other mouse immunoglobulins. No antibody was detected against non-immunoglobulin serum proteins.
アプリケーション	<b>適用あり:</b> ICC, ELISA, IHC-P, WB
標識	Alkaline Phosphatase

### 製品の特性

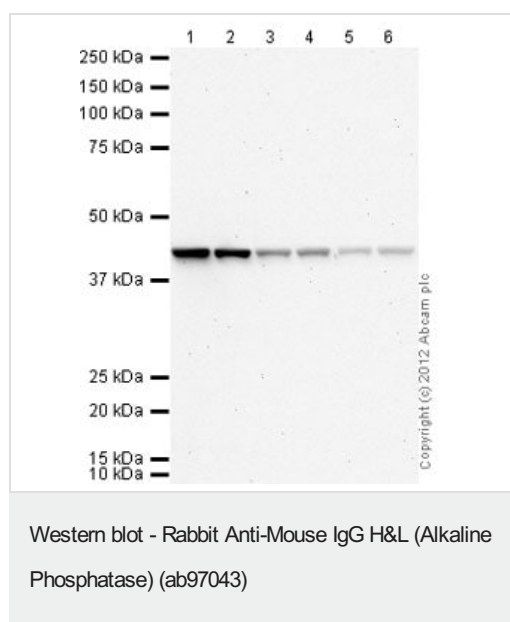
製品の状態	Liquid
保存方法	Shipped at 4°C. Store at +4°C.
バッファー	pH: 6.8 Preservative: 0.09% Sodium azide Constituents: 0.2% BSA, 0.58% Sodium chloride, 0.0095% Magnesium chloride, 0.00136% Zinc chloride, 1.19% HEPES
精製度	Immunogen affinity purified
特記事項 (精製)	This antibody was isolated by affinity chromatography using antigen coupled to agarose beads and conjugated to Alkaline Phosphatase (AP).
特記事項 (標識)	Molar enzyme: antibody protein ratio is 1:1
ポリモノ	ポリクローナル
アイソタイプ	IgG
特記事項	Part of the <b>AbExcel</b> range.

### アプリケーション

**The Abpromise guarantee** **Abpromise保証は、** 次のテスト済みアプリケーションにおけるab97043の使用に適用されます  
アプリケーションノートには、推奨の開始希釈率がありますが、適切な希釈率につきましてはご検討ください。

アプリケーション	Abreviews	特記事項
ICC		Use at an assay dependent dilution.
ELISA		1/5000 - 1/50000. (Primary).
IHC-P		1/100 - 1/1000.
WB		1/5000 - 1/50000. (Chemiluminescent).

## 画像



**All lanes** : Anti-beta Actin antibody [mAbcam 8226] - Loading Control ([ab8226](#)) at 1 µg/ml

**All lanes** : HeLa (Human epithelial carcinoma cell line) Whole Cell Lysate

Lysates/proteins at 10 µg per lane.

### Secondary

**Lanes 1-2** : Rabbit Anti-Mouse IgG H&L (Alkaline Phosphatase) (ab97043) at 1/5000 dilution

**Lanes 3-4** : Rabbit Anti-Mouse IgG H&L (Alkaline Phosphatase) (ab97043) at 1/20000 dilution

**Lanes 5-6** : Rabbit Anti-Mouse IgG H&L (Alkaline Phosphatase) (ab97043) at 1/50000 dilution

Developed using the ECL technique.

Performed under reducing conditions.

**Exposure time:** 20 minutes

**Please note:** All products are "FOR RESEARCH USE ONLY. NOT FOR USE IN DIAGNOSTIC PROCEDURES"

## Our Abpromise to you: Quality guaranteed and expert technical support

- Replacement or refund for products not performing as stated on the datasheet
- Valid for 12 months from date of delivery
- Response to your inquiry within 24 hours
- We provide support in Chinese, English, French, German, Japanese and Spanish
- Extensive multi-media technical resources to help you

- We investigate all quality concerns to ensure our products perform to the highest standards

If the product does not perform as described on this datasheet, we will offer a refund or replacement. For full details of the Abpromise, please visit <https://www.abcam.co.jp/abpromise> or contact our technical team.

#### **Terms and conditions**

---

- Guarantee only valid for products bought direct from Abcam or one of our authorized distributors