

Anti-mouse IgG for IP (HRP) ab131368

★★★★★ [3 Abreviews](#) [145 References](#) [画像数 1](#)

製品の概要

製品名	Anti-mouse IgG for IP (HRP)
由来種	Rat
ターゲット生物種	Mouse
アプリケーション	適用あり: WB
標識	HRP

製品の特性

製品の状態	Liquid
保存方法	Shipped at 4°C. Store at +4°C.
バッファー	Constituents: 0.16% Sodium phosphate, 0.88% Sodium chloride, 50% Glycerol, 0.1% BSA
精製度	Protein G purified
ポリ/モノ	モノクローナル
クローン名	eB144
アイソタイプ	IgG
特記事項	Number of blots: At least 20 blots , based on a 1 µl/ml dilution and 5 ml diluted antibody per blot.

Important protocol notes:

1. The anti-mouse IgG for IP secondary antibody (HRP) detects mouse IgG antibodies (subtypes: IgG1, IgG2a, IgG2b, IgG3).
2. The anti-mouse IgG for IP secondary antibody (HRP) preferentially detects the non-reduced form of mouse IgG (IgG1, IgG2a, IgG2b, IgG3) over the reduced, SDS-denatured forms.
3. IP sample should be completely reduced/denatured before loaded onto a western blot.
4. Milk should be used as the blocking protein for the immunoblot.

Western blot and IP resources:

- a) [Western blot a beginner's guide](#)

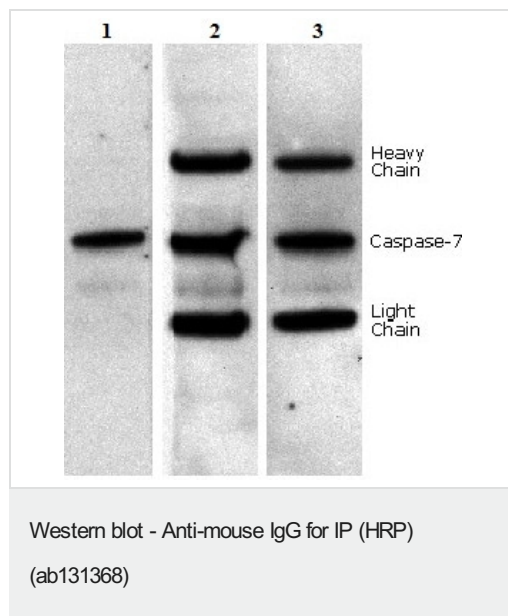
- b) **IP protocol**
c) **IP troubleshooting tips**

アプリケーション

The Abpromise guarantee Abpromise保証は、次のテスト済みアプリケーションにおけるab131368の使用に適用されます
アプリケーションノートには、推奨の開始希釈率がありますが、適切な希釈率につきましてはご検討ください。

アプリケーション	Abreviews	特記事項
WB	★★★★★ (2)	1/1000 - 1/10000. The optimal dilution will depend on the sensitivity of the HRP substrate.

画像



IP sample preparation: Caspase 7 was immunoprecipitated from 0.5 ml of 1×10^7 Jurkat (Human T cell leukemia cell line from peripheral blood) cells/ml with 5 μ g mouse anti-human Caspase 7.

WB conditions: Precipitate from 1×10^6 cells was subjected to electrophoresis, transferred to an PVDF membrane, and immunoblotted with an anti-Caspase 7 antibody.

Detection:

Lane 1: Detection with anti-mouse IgG for IP secondary antibody (HRP) (ab131368)

Lane 2: Detection with an HRP-conjugated anti-mouse IgG H&L secondary antibody

Lane 3: Lane 1 was re-immunoblotted using an HRP-conjugated anti-mouse IgG H&L secondary antibody. The heavy and light-chains can now be seen, confirming that although the immunoprecipitating heavy and light-chains are present, ab131368 detects only native antibody and not denatured heavy and light-chains.

Please note the detection of the heavy and light-chains of the immunoprecipitating antibody in Lane 2 but not in Lane 1.

Please note: All products are "FOR RESEARCH USE ONLY. NOT FOR USE IN DIAGNOSTIC PROCEDURES"

Our Abpromise to you: Quality guaranteed and expert technical support

- Replacement or refund for products not performing as stated on the datasheet
- Valid for 12 months from date of delivery

- Response to your inquiry within 24 hours
- We provide support in Chinese, English, French, German, Japanese and Spanish
- Extensive multi-media technical resources to help you
- We investigate all quality concerns to ensure our products perform to the highest standards

If the product does not perform as described on this datasheet, we will offer a refund or replacement. For full details of the Abpromise, please visit <https://www.abcam.co.jp/abpromise> or contact our technical team.

Terms and conditions

- Guarantee only valid for products bought direct from Abcam or one of our authorized distributors