

Goat Anti-Rat IgG H&L (HRP) ab97057

★★★★★ [5 Abreviews](#) [135 References](#) [画像数 2](#)

製品の概要

製品名	Goat Anti-Rat IgG H&L (HRP)
由来種	Goat
ターゲット生物種	Rat
特異性	By immunoelectrophoresis and ELISA this antibody reacts specifically with Rat IgG and with light chains common to other Rat immunoglobulins. No antibody was detected against non-immunoglobulin serum proteins.
アプリケーション	適用あり: ICC, IHC-P, ELISA, WB
標識	HRP

製品の特性

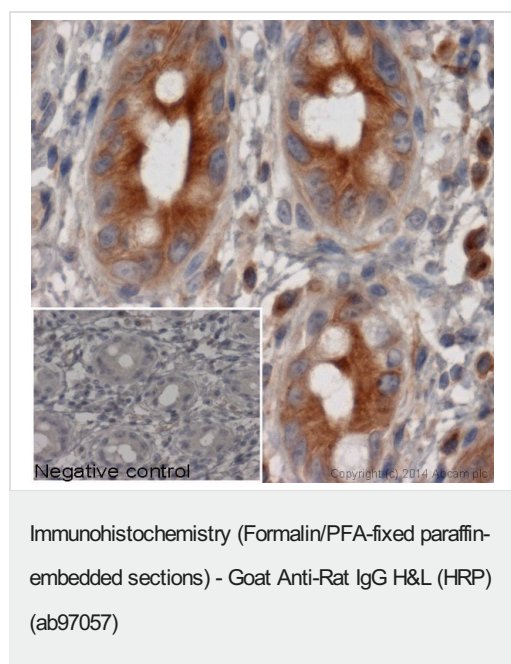
製品の状態	Liquid
保存方法	Shipped at 4°C. Store at +4°C.
バッファー	pH: 6.8 Constituents: 0.2% BSA, 0.05% CMIT/MIT based preservative
精製度	Immunogen affinity purified
特記事項 (精製)	This antibody was isolated by affinity chromatography using antigen coupled to agarose beads and conjugated to Horse Radish Peroxidase (HRP).
特記事項 (標識)	Molar enzyme/ antibody protein ratio is 4:1
ポリ/モノ	ポリクローナル
アイソタイプ	IgG
特記事項	Part of the AbExcel range.

アプリケーション

The Abpromise guarantee **Abpromise保証は、**次のテスト済みアプリケーションにおけるab97057の使用に適用されます
アプリケーションノートには、推奨の開始希釈率がありますが、適切な希釈率につきましてはご検討ください。

アプリケーション	Abreviews	特記事項
ICC		Use at an assay dependent dilution.
IHC-P	★★★★★ (1)	1/200 - 1/5000.
ELISA		1/10000 - 1/100000. (as primary)
WB	★★★★★ (4)	1/2000 - 1/20000. Colorimetric: Use 1/5000-1/30000, Chemiluminescent: use 1/10000-1/50000

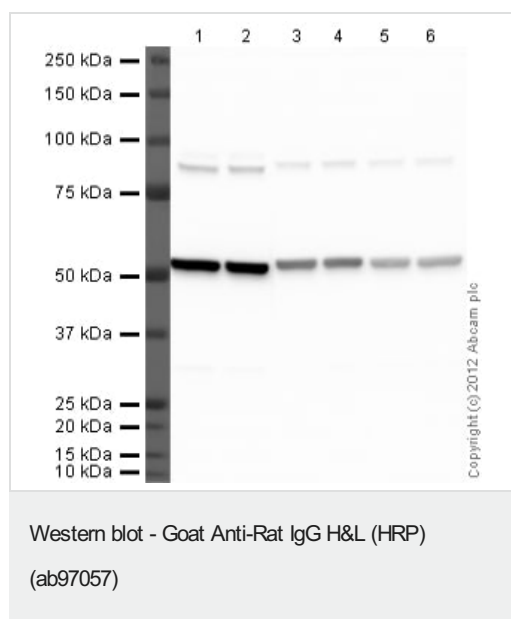
画像



IHC image of alpha tubulin staining in human colon formalin fixed paraffin embedded tissue section*. The section was pre-treated using pressure cooker heat mediated antigen retrieval with sodium citrate buffer (pH6) for 30mins. The section was incubated with **ab64332**, 5µg/ml overnight at +4°C. An HRP-conjugated secondary (ab97057, 1/200 dilution) was used for 1hr at room temperature. The section was counterstained with haematoxylin and mounted with DPX.

The inset negative control image is taken from an identical assay without primary antibody.

*Tissue obtained from the Human Research Tissue Bank, supported by the NIHR Cambridge Biomedical Research Centre



All lanes : Anti-Tubulin antibody [YL 1/2] - Loading Control (**ab6160**) at 1 µg/ml

All lanes : HeLa (Human epithelial carcinoma cell line) Whole Cell Lysate

Lysates/proteins at 20 µg per lane.

Secondary

Lanes 1-2 : Goat Anti-Rat IgG H&L (HRP) (ab97057) at 1/2000 dilution

Lanes 3-4 : Goat Anti-Rat IgG H&L (HRP) (ab97057) at 1/10000 dilution

Lanes 5-6 : Goat Anti-Rat IgG H&L (HRP) (ab97057) at 1/20000 dilution

Developed using the ECL technique.

Performed under reducing conditions.

Observed band size: 52 kDa

Additional bands at : 85 kDa. We are unsure as to the identity of these extra bands.

Please note: All products are "FOR RESEARCH USE ONLY. NOT FOR USE IN DIAGNOSTIC PROCEDURES"

Our Abpromise to you: Quality guaranteed and expert technical support

- Replacement or refund for products not performing as stated on the datasheet
- Valid for 12 months from date of delivery
- Response to your inquiry within 24 hours
- We provide support in Chinese, English, French, German, Japanese and Spanish
- Extensive multi-media technical resources to help you
- We investigate all quality concerns to ensure our products perform to the highest standards

If the product does not perform as described on this datasheet, we will offer a refund or replacement. For full details of the Abpromise, please visit <https://www.abcam.co.jp/abpromise> or contact our technical team.

Terms and conditions

- Guarantee only valid for products bought direct from Abcam or one of our authorized distributors