

# Goat Anti-Rat IgG H&L (Alexa Fluor® 568) preadsorbed ab175710

8 References [画像数 3](#)

### 製品の概要

製品名	Goat Anti-Rat IgG H&L (Alexa Fluor® 568) preadsorbed
由来種	Goat
ターゲット生物種	Rat
特異性	By immunoelectrophoresis and ELISA this antibody reacts specifically with rat IgG and with light chain common to other rat immunoglobulins. No antibody was detected against non-immunoglobulin serum proteins. Less than 1% cross reactivity to bovine, chicken, human, mouse, rabbit and sheep IgG was detected. This antibody may cross react with IgG from other species.
アプリケーション	<b>適用あり:</b> IHC-Fr, Flow Cyt, ICC/IF, IHC-P, ELISA
吸着処理血清	Chicken, Cow, Human, Mouse, Rabbit, Sheep <a href="#">more details</a>
免疫原	The details of the immunogen for this antibody are not available.
標識	Alexa Fluor® 568. Ex: 578nm, Em: 603nm

### 製品の特性

製品の状態	Liquid
保存方法	Shipped at 4°C. Store at +4°C short term (1-2 weeks). Upon delivery aliquot. Store at -20°C. Avoid freeze / thaw cycle. Stable for 12 months at -20°C. Store In the Dark.
バッファー	Preservative: 0.02% Sodium azide Constituents: 23% Glycerol (glycerin, glycerine), PBS, 1% BSA
精製度	Immunogen affinity purified
特記事項 (精製)	Antiserum was cross adsorbed using bovine, chicken, human, mouse, rabbit and sheep immunosorbents to remove cross reactive antibodies. The antibody to rat IgG was isolated by affinity chromatography using antigen coupled to agarose beads.
ポリモノ	ポリクローナル
アイソタイプ	IgG
特記事項	Alexa Fluor® is a registered trademark of Molecular Probes, Inc, a Thermo Fisher Scientific Company. The Alexa Fluor® dye included in this product is provided under an intellectual property license from Life Technologies Corporation. As this product contains the Alexa Fluor® dye, the

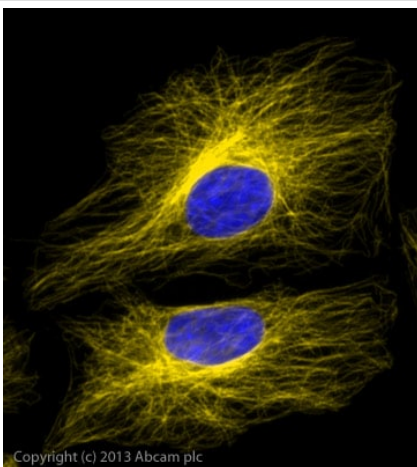
purchase of this product conveys to the buyer the non-transferable right to use the purchased product and components of the product only in research conducted by the buyer (whether the buyer is an academic or for-profit entity). As this product contains the Alexa Fluor® dye the sale of this product is expressly conditioned on the buyer not using the product or its components, or any materials made using the product or its components, in any activity to generate revenue, which may include, but is not limited to use of the product or its components: in manufacturing; (ii) to provide a service, information, or data in return for payment (iii) for therapeutic, diagnostic or prophylactic purposes; or (iv) for resale, regardless of whether they are sold for use in research. For information on purchasing a license to this product for purposes other than research, contact Life Technologies Corporation, 5781 Van Allen Way, Carlsbad, CA 92008 USA or [outlicensing@thermofisher.com](mailto:outlicensing@thermofisher.com).

## アプリケーション

**The Abpromise guarantee** Abpromise保証は、次のテスト済みアプリケーションにおけるab175710の使用に適用されます  
アプリケーションノートには、推奨の開始希釈率がありますが、適切な希釈率につきましてはご検討ください。

アプリケーション	Abreviews	特記事項
IHC-Fr		Use at an assay dependent concentration.
Flow Cyt		1/2000.
ICC/IF		1/200 - 1/1000.
IHC-P		Use at an assay dependent concentration.
ELISA		Use at an assay dependent concentration.

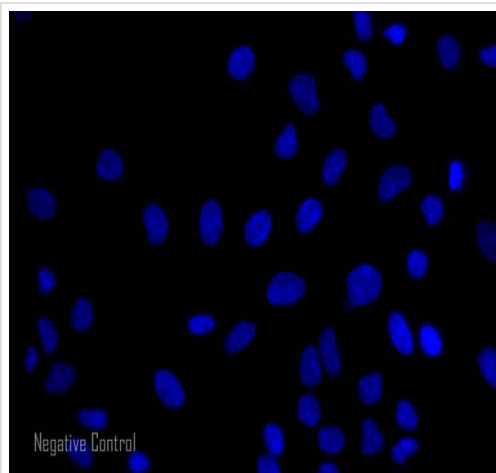
## 画像



ICC/IF image of **ab6160** stained HeLa cells. The cells were 100% methanol fixed (5 min) and then incubated in 1%BSA / 10% normal goat serum / 0.3M glycine in 0.1% PBS-Tween for 1h to permeabilise the cells and block non-specific protein-protein interactions. The cells were then incubated with the antibody (**ab6160**, 1µg/ml) overnight at +4°C. The secondary antibody (yellow) was ab175710 Alexa Fluor® 568 Goat anti-Rat IgG (H&L) used at 1µg/ml for 1h. DAPI was used to stain the cell nuclei (blue) at a concentration of 1.43µM.

Alexa Fluor® 568 is pseudocolored in yellow.

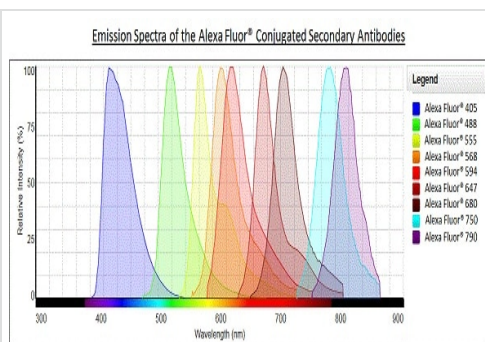
Immunocytochemistry/ Immunofluorescence - Goat  
Anti-Rat IgG H&L (Alexa Fluor® 568) preadsorbed  
(ab175710)



Immunocytochemistry/ Immunofluorescence - Goat Anti-Rat IgG H&L (Alexa Fluor® 568) preadsorbed (ab175710)

HeLa cells showing negative staining by ICC/IF using only secondary antibody. The cells were 100% methanol fixed (5 min) and then incubated in 1%BSA / 10% normal goat serum / 0.3M glycine in 0.1% PBS-Tween for 1h to permeabilise the cells and block non-specific protein-protein interactions. The secondary antibody (yellow) was ab175710 Alexa Fluor® 568 Goat anti-Rat IgG (H&L) used at 1µg/ml for 1h. DAPI was used to stain the cell nuclei (blue) at a concentration of 1.43µM.

Alexa Fluor® 568 is pseudocolored in yellow.



Alexa Fluor® - Goat Anti-Rat IgG H&L (Alexa Fluor® 568) preadsorbed (ab175710)

**Please note:** All products are "FOR RESEARCH USE ONLY. NOT FOR USE IN DIAGNOSTIC PROCEDURES"

### Our Abpromise to you: Quality guaranteed and expert technical support

- Replacement or refund for products not performing as stated on the datasheet
- Valid for 12 months from date of delivery
- Response to your inquiry within 24 hours
- We provide support in Chinese, English, French, German, Japanese and Spanish
- Extensive multi-media technical resources to help you
- We investigate all quality concerns to ensure our products perform to the highest standards

If the product does not perform as described on this datasheet, we will offer a refund or replacement. For full details of the Abpromise, please visit <https://www.abcam.co.jp/abpromise> or contact our technical team.

## Terms and conditions

---

- Guarantee only valid for products bought direct from Abcam or one of our authorized distributors