

Goat Anti-Rabbit IgG H&L (HRP) preadsorbed ab97080

★★★★☆ [2 Abreviews](#) [203 References](#) [画像数 2](#)

製品の概要

製品名	Goat Anti-Rabbit IgG H&L (HRP) preadsorbed
由来種	Goat
ターゲット生物種	Rabbit
特異性	By immunoelectrophoresis and ELISA this antibody reacts specifically with Rabbit IgG and with light chains common to other Rabbit immunoglobulins. No antibody was detected against non immunoglobulin serum proteins. Reduced cross-reactivity to bovine, chicken, goat, horse, human, mouse, pig and rat IgG was detected.
アプリケーション	適用あり: ICC, IHC-P, ELISA, WB
吸着処理血清	Chicken, Cow, Horse, Human, Mouse, Pig, Rat more details
標識	HRP

製品の特性

製品の状態	Liquid
保存方法	Shipped at 4°C. Store at +4°C.
バッファー	pH: 6.8 Constituents: 0.2% BSA, 0.05% CMIT/MIT based preservative
精製度	Immunogen affinity purified
特記事項(精製)	Antiserum was cross absorbed using bovine, chicken, horse, human, mouse, pig and rat immunosorbents to remove cross reactive antibodies. This antibody was isolated by affinity chromatography using antigen coupled to agarose beads and conjugated to Horse Radish Peroxidase (HRP).
ポリ/モノ	ポリクローナル
アイソタイプ	IgG

アプリケーション

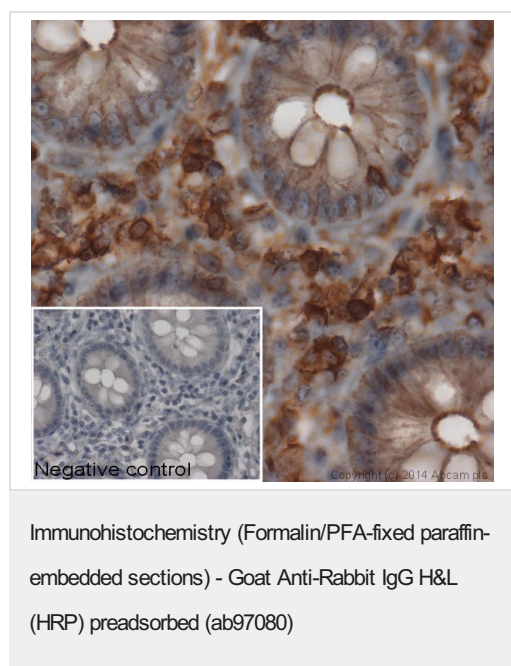
The Abpromise guarantee

Abpromise保証は、次のテスト済みアプリケーションにおけるab97080の使用に適用されます

アプリケーションノートには、推奨の開始希釈率がありますが、適切な希釈率につきましてはご確認ください。

アプリケーション	Abreviews	特記事項
ICC		Use at an assay dependent concentration.
IHC-P		1/200 - 1/5000.
ELISA		1/25000 - 1/75000. as primary.
WB	★★★★★ (1)	1/5000 - 1/50000. Colorimetric: 1/5000 - 1/30000; Chemiluminescent: 1/10000 - 1/50000.

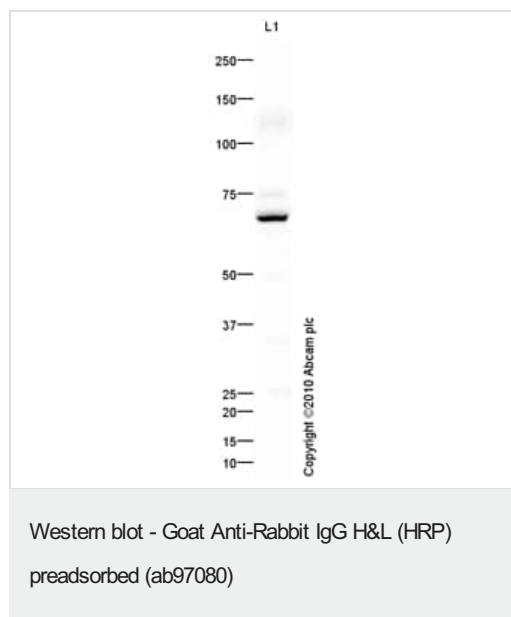
画像



IHC image of beta Actin staining in normal human colon, formalin-fixed and paraffin-embedded tissue*. The section was pre-treated using pressure cooker heat mediated antigen retrieval with sodium citrate buffer (pH6) for 30mins. The section was incubated with [ab8227](#), 3µg/ml overnight at +4°C. An HRP-conjugated secondary (Ab97080, 1/2000 dilution) was used for 1hr at room temperature. The section was counterstained with haematoxylin and mounted with DPX.

The inset negative control image is secondary-only at 1/500 dilution.

*Tissue obtained from the Human Research Tissue Bank, supported by the NIHR Cambridge Biomedical Research Centre



Goat polyclonal Secondary Antibody to Rabbit IgG - H&L (HRP), pre-adsorbed (ab97080) at 1/5000 dilution developed using the ECL technique, with [ab87342](#).

Please note: All products are "FOR RESEARCH USE ONLY. NOT FOR USE IN DIAGNOSTIC PROCEDURES"

Our Abpromise to you: Quality guaranteed and expert technical support

- Replacement or refund for products not performing as stated on the datasheet
- Valid for 12 months from date of delivery
- Response to your inquiry within 24 hours

- We provide support in Chinese, English, French, German, Japanese and Spanish
- Extensive multi-media technical resources to help you
- We investigate all quality concerns to ensure our products perform to the highest standards

If the product does not perform as described on this datasheet, we will offer a refund or replacement. For full details of the Abpromise, please visit <https://www.abcam.co.jp/abpromise> or contact our technical team.

Terms and conditions

- Guarantee only valid for products bought direct from Abcam or one of our authorized distributors