

### Goat Anti-Rabbit IgG H&L (Cy3 ®) preadsorbed ab97075

**39 References**   [画像数 2](#)

#### 製品の概要

製品名	Goat Anti-Rabbit IgG H&L (Cy3 ®) preadsorbed
由来種	Goat
ターゲット生物種	Rabbit
特異性	By immunoelectrophoresis and ELISA this antibody reacts specifically with Rabbit IgG and with light chains common to other Rabbit immunoglobulins. No antibody was detected against non immunoglobulin serum proteins. Reduced cross-reactivity to bovine, chicken, goat, horse, human, mouse, pig and rat IgG was detected.
アプリケーション	<b>適用あり:</b> IHC-P, ICC/IF, Flow Cyt
吸着処理血清	Chicken, Cow, Horse, Human, Mouse, Pig, Rat <a href="#">more details</a>
免疫原	Other Immunogen Type corresponding to Rabbit IgG.
標識	Cy3 ®. Ex: 552nm, Em: 565nm

#### 製品の特性

製品の状態	Liquid
保存方法	Shipped at 4°C. Store at +4°C.
バッファー	pH: 6.8 Preservative: 0.09% Sodium azide Constituents: 0.2% BSA, PBS
精製度	Immunogen affinity purified
特記事項(精製)	Antiserum was cross absorbed using bovine, chicken, horse, human, mouse, pig and rat immunosorbents to remove cross reactive antibodies. This antibody was isolated by affinity chromatography using antigen coupled to agarose beads and conjugated to Cy3 ®.
ポリ/モノ	ポリクローナル
アイソタイプ	IgG

#### アプリケーション

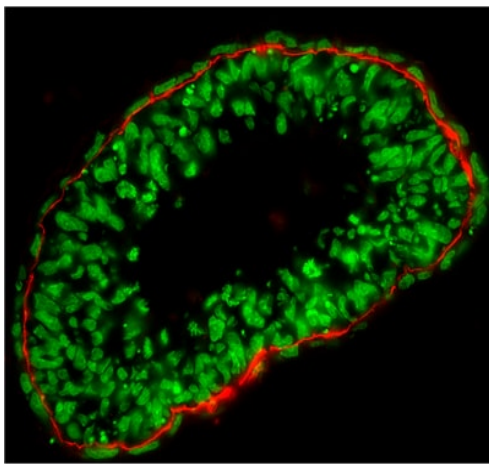
## The Abpromise guarantee

**Abpromise保証は、次のテスト済みアプリケーションにおけるab97075の使用に適用されます**

アプリケーションノートには、推奨の開始希釈率がありますが、適切な希釈率につきましてはご確認ください。

アプリケーション	Abreviews	特記事項
IHC-P		1/50 - 1/500.
ICC/IF		1/50 - 1/500.
Flow Cyt		1/100 - 1/1000.

## 画像



Immunohistochemistry (Frozen sections) - Goat  
Anti-Rabbit IgG H&L (Cy3 ®) preadsorbed (ab97075)

Courtesy of Dr. Shaohua Li, UMDNJ-Robert Wood  
Johnson Medical School

Sample: mouse embryonic stem cell-differentiated embryoid  
bodies (EBs)

### Preparation:

Fix in 3%PFA in PBS for 30 min at RT

Incubate in 7.5% sucrose-PBS for 3h at RT

Incubate in 15% sucrose-PBS at 4 degree Celsius overnight

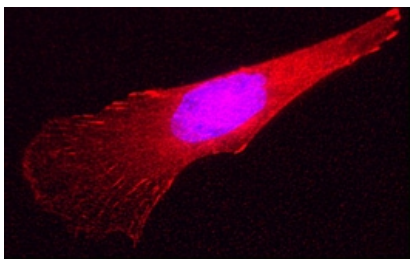
Embed the EBs in tissue-Tek OCT compound

Cut frozen sections to 4-20 µm thickness

Primary antibody: Rabbit anti-laminin alpha 1, 1:400

Secondary antibody:Goat polyclonal Secondary Antibody to Rabbit  
IgG - H&L (Cy3®) (ab97075), 1:100

Nuclei were counterstained with SYTO 16



Immunocytochemistry/ Immunofluorescence - Goat  
Anti-Rabbit IgG H&L (Cy3 ®) preadsorbed (ab97075)

Courtesy of Dr. Shaohua Li, UMDNJ-Robert Wood  
Johnson Medical School

Image: Courtesy of Dr. Shaohua Li, UMDNJ-Robert Wood Johnson  
Medical School

Sample: mouse endoderm cell

### Preparation:

Fix in 3% PFA in PBS for 30 min at RT

Primary antibody: Rabbit anti-talin (**ab71333**), 1:100

Secondary antibody: Goat polyclonal Secondary Antibody to Rabbit  
IgG - H&L (Cy3® 488) preadsorbed (ab97075), 1:100

**Please note:** All products are "FOR RESEARCH USE ONLY. NOT FOR USE IN DIAGNOSTIC PROCEDURES"

### **Our Abpromise to you: Quality guaranteed and expert technical support**

---

- Replacement or refund for products not performing as stated on the datasheet
- Valid for 12 months from date of delivery
- Response to your inquiry within 24 hours
  
- We provide support in Chinese, English, French, German, Japanese and Spanish
- Extensive multi-media technical resources to help you
- We investigate all quality concerns to ensure our products perform to the highest standards

If the product does not perform as described on this datasheet, we will offer a refund or replacement. For full details of the Abpromise, please visit <https://www.abcam.co.jp/abpromise> or contact our technical team.

### **Terms and conditions**

---

- Guarantee only valid for products bought direct from Abcam or one of our authorized distributors