

### Goat Anti-Rabbit IgG H&L ab182016

8 References 画像数 2

#### 製品の概要

製品名	Goat Anti-Rabbit IgG H&L
由来種	Goat
ターゲット生物種	Rabbit
特異性	The antibody reacts with rabbit immunoglobulins of all classes. Cross-reactions as determined by ELISA (see figure below): Mouse IgG, rat IgG, and chicken IgY, less than 2%. Human IgG, less than 7%.
アプリケーション	<b>適用あり:</b> IP, IHC-P, WB, ELISA
免疫原	The details of the immunogen for this antibody are not available.

#### 製品の特性

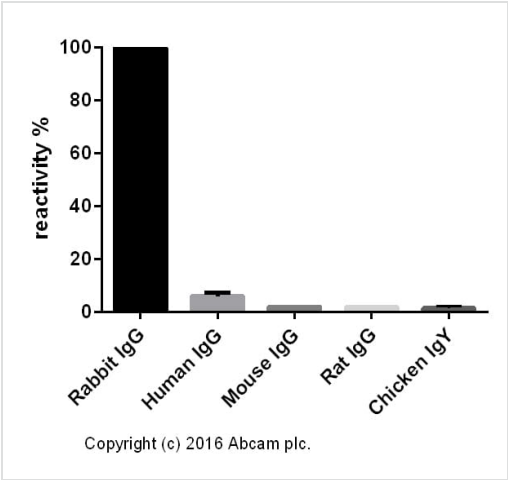
製品の状態	Liquid
保存方法	Shipped at 4°C. Store at +4°C short term (1-2 weeks). Upon delivery aliquot. Store at -20°C. Avoid freeze / thaw cycle.
バッファー	pH: 7.40 Preservative: 0.02% Sodium azide Constituent: PBS
精製度	Affinity purified
特記事項 (精製)	Immunogen affinity purified - This antibody was isolated by affinity chromatography using antigen coupled to agarose beads.
ポリ/モノ	ポリクローナル
アイソタイプ	IgG

#### アプリケーション

**The Abpromise guarantee**      **Abpromise保証は、** 次のテスト済みアプリケーションにおけるab182016の使用に適用されます  
アプリケーションノートには、推奨の開始希釈率がありますが、適切な希釈率につきましてはご検討ください。

アプリケーション	Abreviews	特記事項
IP		Use at an assay dependent concentration.
IHC-P		Use at an assay dependent concentration.
WB		Use at an assay dependent concentration.
ELISA		1/20000 - 1/200000.

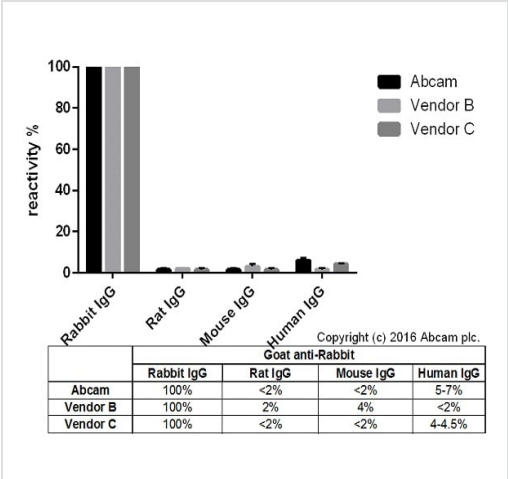
画像



ELISA - Goat Anti-Rabbit IgG H&L (ab182016)

Cross-reactivity of the polyclonal secondary antibody ab182016 was tested using a sandwich ELISA approach. The wells were coated with the indicated IgG standards at 1 µg/ml (50 µl/well) and incubated overnight at 4°C, followed by a 5% BSA blocking step for 2h at RT. ab182016 was then added starting at 1 µg/ml and gradually diluted 1/4 (50 µl/well), followed by incubation for 2h. For the detection Donkey anti-Goat IgG H&L (HRP) ([ab6885](#)) was used at 1/10,000 dilution (50 µl/well), followed by incubation for 1h at RT.

**For the batch tested, ab182016 showed a cross-reactivity of 5-7% towards Human IgG and below 2% towards Mouse IgG, Rat IgG and Chicken IgY.**



ELISA - Goat Anti-Rabbit IgG H&L (ab182016)

Cross-reactivity of Goat anti-Rabbit IgG H&L (ab182016) and Goat anti-Rabbit IgG H&L obtained from two different vendors was tested using a sandwich ELISA approach. The wells were coated with the indicated IgG standards (Rabbit, Human, Mouse and Rat) at 1 µg/ml (50 µl/well) and incubated overnight at 4°C, followed by a 5% BSA blocking step for 2h at RT. Secondary antibodies were then added starting at 1 µg/ml and gradually diluted 1/4 (50 µl/well), followed by incubation for 2h. For the detection Donkey anti-Goat IgG H&L (HRP) ([ab6885](#)) was used at 1/10,000 dilution (50 µl/well), followed by incubation for 1h at RT. This data is from a representative dilution.

**Please note:** All products are "FOR RESEARCH USE ONLY. NOT FOR USE IN DIAGNOSTIC PROCEDURES"

**Our Abpromise to you: Quality guaranteed and expert technical support**

- Replacement or refund for products not performing as stated on the datasheet
- Valid for 12 months from date of delivery
- Response to your inquiry within 24 hours
- We provide support in Chinese, English, French, German, Japanese and Spanish
- Extensive multi-media technical resources to help you
- We investigate all quality concerns to ensure our products perform to the highest standards

If the product does not perform as described on this datasheet, we will offer a refund or replacement. For full details of the Abpromise, please visit <https://www.abcam.co.jp/abpromise> or contact our technical team.

#### **Terms and conditions**

---

- Guarantee only valid for products bought direct from Abcam or one of our authorized distributors