

### Goat Anti-Mouse IgG1 (HRP) preadsorbed ab98693

★★★★★ [1 Abreviews](#) [18 References](#) [画像数 1](#)

#### 製品の概要

製品名	Goat Anti-Mouse IgG1 (HRP) preadsorbed
由来種	Goat
ターゲット生物種	Mouse
特異性	<p>By immunoelectrophoresis and ELISA this antibody reacts specifically with mouse IgG1.</p> <p>Cross reactivity with immunoglobulins is less than 2%. No antibody was detected against non-immunoglobulin serum proteins.</p> <p>Less than 1% cross reactivity to human and rat IgG1 was detected. This antibody may cross react with IgG1 from other species.</p>
アプリケーション	<b>適用あり:</b> ICC, IHC-P, ELISA, WB
吸着処理血清	Human, Rat
標識	HRP

[more details](#)

#### 製品の特性

製品の状態	Liquid
保存方法	Shipped at 4°C. Store at +4°C.
バッファー	<p>pH: 6.8</p> <p>Constituents: 0.2% BSA, 0.05% CMIT/MIT based preservative</p>
精製度	Immunogen affinity purified
特記事項(精製)	Antiserum was solid phase adsorbed to ensure subclass specificity. Antiserum was cross adsorbed using human and rat immunosorbents to remove cross reactive antibodies. The antibody to mouse IgG1 was isolated by affinity chromatography using antigen coupled to agarose beads and conjugated to horseradish peroxidase (HRP).
ポリ/モノ	ポリクローナル
アイソタイプ	IgG

#### アプリケーション

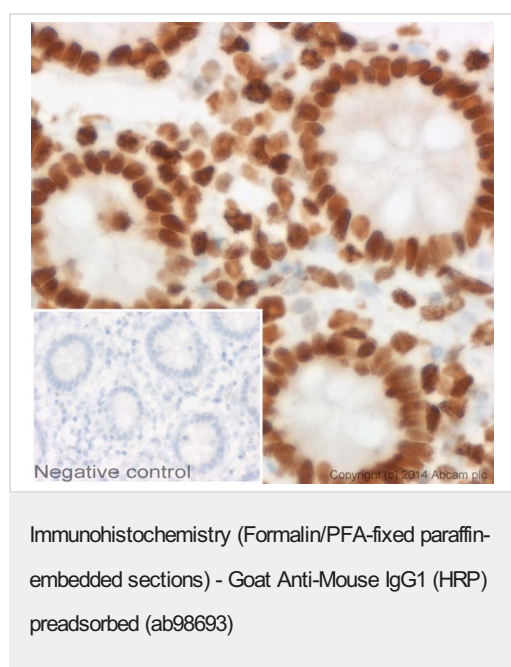
**Abpromise保証は、** 次のテスト済みアプリケーションにおけるab98693の使用に適用されます

## The Abpromise guarantee

アプリケーションノートには、推奨の開始希釈率がありますが、適切な希釈率につきましてはご確認ください。

アプリケーション	Abreviews	特記事項
ICC		Use at an assay dependent dilution.
IHC-P		1/200 - 1/2000.
ELISA		1/10000 - 1/100000. Similar dilution to primary antibody.
WB	★★★★★ (1)	1/2000 - 1/20000. Colorimetric 1/5000 - 1/25000 Chemiluminescent

## 画像



IHC image of Histone H1.0 staining in human colon formalin fixed paraffin embedded tissue section\*. The section was pre-treated using pressure cooker heat mediated antigen retrieval with sodium citrate buffer (pH6) for 30mins. The section was incubated with **ab11080**, 7.5µg/ml overnight at +4°C. An HRP-conjugated secondary (ab98693, 1/2000 dilution) was used for 1hr at room temperature. The section was counterstained with haematoxylin and mounted with DPX.

The inset negative control image is secondary-only at 1/500 dilution.

\*Tissue obtained from the Human Research Tissue Bank, supported by the NIHR Cambridge Biomedical Research Centre

**Please note:** All products are "FOR RESEARCH USE ONLY. NOT FOR USE IN DIAGNOSTIC PROCEDURES"

## Our Abpromise to you: Quality guaranteed and expert technical support

- Replacement or refund for products not performing as stated on the datasheet
- Valid for 12 months from date of delivery
- Response to your inquiry within 24 hours
- We provide support in Chinese, English, French, German, Japanese and Spanish
- Extensive multi-media technical resources to help you
- We investigate all quality concerns to ensure our products perform to the highest standards

If the product does not perform as described on this datasheet, we will offer a refund or replacement. For full details of the Abpromise, please visit <https://www.abcam.co.jp/abpromise> or contact our technical team.

## Terms and conditions

---

- Guarantee only valid for products bought direct from Abcam or one of our authorized distributors