

Goat Anti-Mouse IgG H&L (FITC) preadsorbed ab7064

★★★★★ 3 Abreviews 36 References 画像数 4

製品の概要

製品名	Goat Anti-Mouse IgG H&L (FITC) preadsorbed
由来種	Goat
ターゲット生物種	Mouse
アプリケーション	適用あり: ICC/IF, Immunomicroscopy, Flow Cyt, IHC-P, IHC-Fr, ELISA
吸着処理血清	Chicken, Cow, Goat, Guinea pig, Hamster, Horse, Human, Rabbit, Rat, Sheep <a href="#">more details</a>
免疫原	Full length native Mouse IgG (purified).
標識	FITC. Ex: 493nm, Em: 528nm

製品の特性

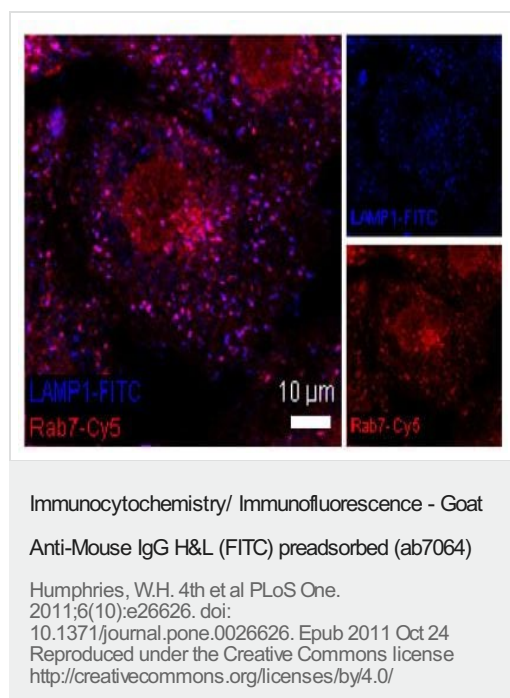
製品の状態	Liquid
保存方法	Shipped at 4°C. Store at +4°C.
バッファー	pH: 6.50 Preservative: 0.01% Sodium azide Constituents: 0.42% Tripotassium orthophosphate, 0.87% Sodium chloride, 1% BSA
精製度	Affinity purified
特記事項(精製)	This product was prepared from monospecific antiserum by immunoaffinity chromatography using mouse IgG coupled to agarose beads followed by solid phase adsorption(s) to remove any unwanted reactivities.
ポリ/モノ	ポリクローナル
アイソタイプ	IgG

アプリケーション

The Abpromise guarantee      Abpromise保証は、 次のテスト済みアプリケーションにおけるab7064の使用に適用されます  
アプリケーションノートには、推奨の開始希釈率がありますが、適切な希釈率につきましてはご検討ください。

アプリケーション	Abreviews	特記事項
ICC/IF	★★★★★ (1)	Use at an assay dependent concentration. PubMed: 15767251
Immunomicroscopy		Use at an assay dependent concentration.
Flow Cyt	★★★★★ (1)	1/1000 - 1/2000.
IHC-P		Use at an assay dependent concentration.
IHC-Fr	★★★★★ (1)	Use at an assay dependent concentration.
ELISA		1/10000 - 1/50000.

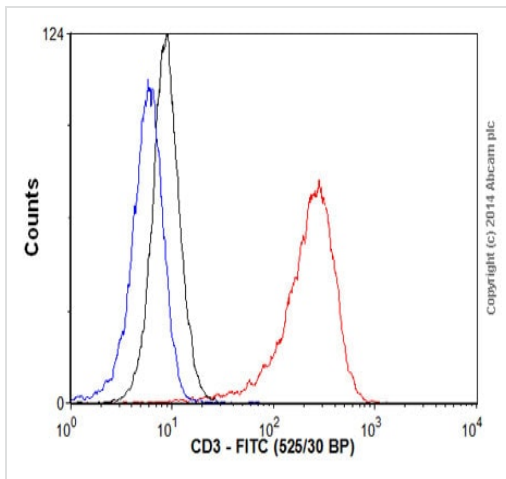
## 画像



### Rab7 and LAMP1 are highly colocalized in BS-C-1 cells and in HeLa cells

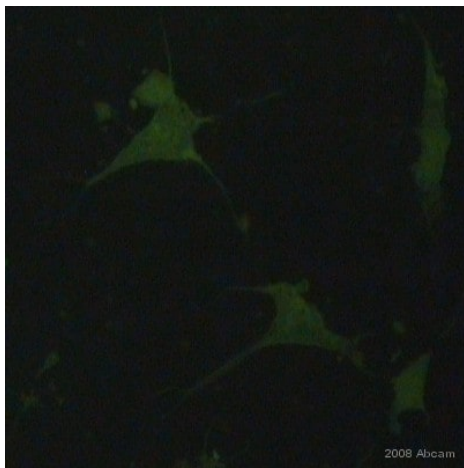
LAMP1 was detected with a mouse antiLAMP1 antibody in ICC/IF analysis of BS-C-1 cells.

Anti-LAMP1 was visualized using ab7064 at 1/500 dilution.



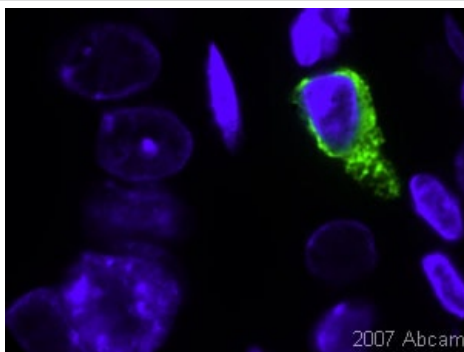
Flow Cytometry - Goat Anti-Mouse IgG H&L (FITC) preadsorbed (ab7064)

Overlay histogram showing Jurkat cells stained with **ab8090** (red line). The cells were fixed with 4% paraformaldehyde (10 min) and then permeabilized with 0.1% PBS-Tween for 20 min. The cells were then incubated in 1x PBS / 10% normal goat serum / 0.3M glycine to block non-specific protein-protein interactions followed by the antibody (**ab8090**, 0.01µg/1x10<sup>6</sup> cells) for 30 min at 22°C. The secondary antibody Goat anti-mouse IgG H&L (FITC, pre-adsorbed) (ab7064) was used at 1/1000 dilution for 30 min at 22°C. Isotype control antibody (black line) was mouse IgG2a [ICIGG2A] (**ab91361**, 0.01µg/1x10<sup>6</sup> cells) used under the same conditions. Unlabelled sample (blue line) was also used as a control. Acquisition of >5,000 events were collected using a 20mW Argon ion laser (488nm) and 525/30 bandpass filter.



Immunocytochemistry/ Immunofluorescence - Goat Anti-Mouse IgG H&L (FITC) preadsorbed (ab7064)

ab7064 was used at dilution 1/20 with the primary antibody **ab7852** in ICC. See the review on **ab7852**.



Immunohistochemistry (Formalin/PFA-fixed paraffin-embedded sections) - Goat Anti-Mouse IgG H&L (FITC) preadsorbed (ab7064)

ab7064 was used at dilution 1/2000 with the primary antibody **ab2378** in IHC-P. See the review on **ab2378**.

### **Our Abpromise to you: Quality guaranteed and expert technical support**

---

- Replacement or refund for products not performing as stated on the datasheet
- Valid for 12 months from date of delivery
- Response to your inquiry within 24 hours
  
- We provide support in Chinese, English, French, German, Japanese and Spanish
- Extensive multi-media technical resources to help you
- We investigate all quality concerns to ensure our products perform to the highest standards

If the product does not perform as described on this datasheet, we will offer a refund or replacement. For full details of the Abpromise, please visit <https://www.abcam.co.jp/abpromise> or contact our technical team.

### **Terms and conditions**

---

- Guarantee only valid for products bought direct from Abcam or one of our authorized distributors