

Goat Anti-Chicken IgY H&L (Biotin) ab207998

1 References [画像数 2](#)

製品の概要

製品名	Goat Anti-Chicken IgY H&L (Biotin)
由来種	Goat
ターゲット生物種	Chicken
アプリケーション	適用あり: ELISA, ICC/IF, WB, Flow Cyt, IP, IHC-Fr, IHC-P
免疫原	The details of the immunogen for this antibody are not available.
標識	Biotin

製品の特性

製品の状態	Liquid
保存方法	Shipped at 4°C. Store at +4°C short term (1-2 weeks). Upon delivery aliquot. Store at -20°C. Avoid freeze / thaw cycle. Store In the Dark.
バッファー	pH: 7.40 Preservative: 0.02% Sodium azide Constituents: PBS, 1% BSA, 30% Glycerol (glycerin, glycerine)
精製度	Immunogen affinity purified
特記事項 (精製)	Immunogen affinity purified - This antibody was isolated by affinity chromatography using antigen coupled to agarose beads and conjugated to Biotin.
ポリモノ	ポリクローナル
アイソタイプ	IgG

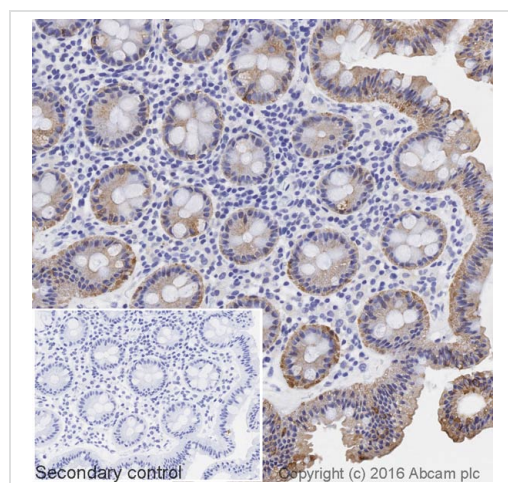
アプリケーション

The Abpromise guarantee **Abpromise保証は、次のテスト済みアプリケーションにおけるab207998の使用に適用されます**
アプリケーションノートには、推奨の開始希釈率がありますが、適切な希釈率につきましてはご検討ください。

アプリケーション	Abreviews	特記事項
ELISA		1/20000 - 1/200000.

アプリケーション	Abreviews	特記事項
ICC/IF		Use at an assay dependent concentration.
WB		Use at an assay dependent concentration.
Flow Cyt		Use at an assay dependent concentration.
IP		Use at an assay dependent concentration.
IHC-Fr		Use at an assay dependent concentration.
IHC-P		1/200 - 1/5000. Perform heat mediated antigen retrieval with citrate buffer pH 6 before commencing with IHC staining protocol.

画像



Immunohistochemistry (Formalin/PFA-fixed paraffin-embedded sections) - Goat Anti-Chicken IgY H&L (Biotin) (ab207998)

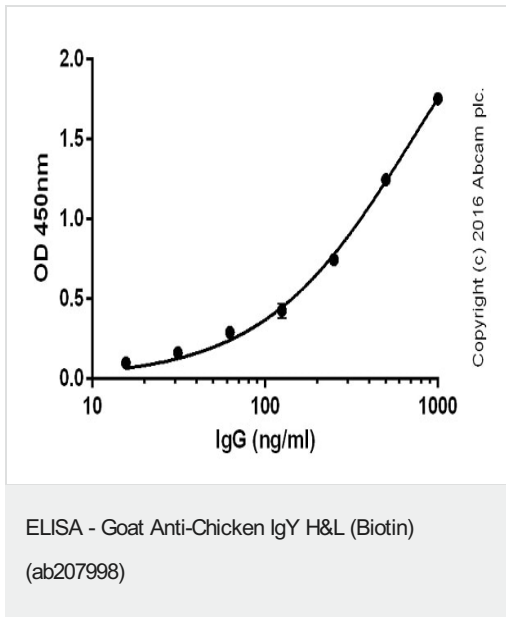
IHC image of Cytokeratin 8 staining in a section of formalin-fixed paraffin-embedded normal human colon tissue*. Ab207998 Goat Anti-Chicken IgY H & L (Biotin) was used as the secondary antibody.

Staining was performed on a Leica Bond™. The section was pre-treated using heat mediated antigen retrieval with sodium citrate buffer (pH6, epitope retrieval solution 1) for 20 mins, before blocking of endogenous biotin using **ab64212**. The section was then incubated with **ab107115**, 1/100 dilution, for 15 mins at room temperature, followed by ab207998, 1/200 dilution, for 15 mins at room temperature. Detection was via an HRP conjugated ABC system and DAB was used as the chromogen. The section was then counterstained with haematoxylin and mounted with DPX.

The inset negative control image is taken from an identical assay without primary antibody.

For other IHC staining systems (automated and non-automated) customers should optimize variable parameters such as antigen retrieval conditions, primary antibody concentration and antibody incubation times.

**Tissue obtained from the Human Research Tissue Bank, supported by the NIHR Cambridge Biomedical Research Centre*



ab207998 was tested by direct ELISA, where wells were coated with serially diluted chicken IgY (1000 – 16 ng/ml) for 2 hours, followed by a 2 hour blocking step (5% BSA). ab207998 (1:20,000 dilution; 2 hours) was added and detected by streptavidin-HRP (**ab7403**; 1:10,000 dilution; 1 hour). Signal was developed by TMB substrate. Data from duplicates; +/- SD.

Please note: All products are "FOR RESEARCH USE ONLY. NOT FOR USE IN DIAGNOSTIC PROCEDURES"

Our Abpromise to you: Quality guaranteed and expert technical support

- Replacement or refund for products not performing as stated on the datasheet
- Valid for 12 months from date of delivery
- Response to your inquiry within 24 hours
- We provide support in Chinese, English, French, German, Japanese and Spanish
- Extensive multi-media technical resources to help you
- We investigate all quality concerns to ensure our products perform to the highest standards

If the product does not perform as described on this datasheet, we will offer a refund or replacement. For full details of the Abpromise, please visit <https://www.abcam.co.jp/abpromise> or contact our technical team.

Terms and conditions

- Guarantee only valid for products bought direct from Abcam or one of our authorized distributors