

### Donkey Anti-Rabbit IgG H&L (Alexa Fluor® 680) ab175772

★★★★★ [3 Abreviews](#) [16 References](#) [画像数 2](#)

#### 製品の概要

製品名	Donkey Anti-Rabbit IgG H&L (Alexa Fluor® 680)
由来種	Donkey
ターゲット生物種	Rabbit
アプリケーション	<b>適用あり:</b> WB
免疫原	The details of the immunogen for this antibody are not available.
標識	Alexa Fluor® 680. Ex: 679nm, Em: 702nm

#### 製品の特性

製品の状態	Liquid
保存方法	Shipped at 4°C. Store at +4°C short term (1-2 weeks). Upon delivery aliquot. Store at -20°C. Avoid freeze / thaw cycle. Stable for 12 months at -20°C. Store In the Dark.
バッファー	Preservative: 0.02% Sodium azide Constituents: 23% Glycerol (glycerin, glycerine), PBS, 1% BSA
精製度	Immunogen affinity purified
ポリ/モノ	ポリクローナル
アイソタイプ	IgG
特記事項	<p>We batch test Donkey Anti-Rabbit IgG H&amp;L (Alexa Fluor® 680), ab175772 in fluorescent WB. Although we don't batch test for ICC, ELISA, IHC-Fr or Flow cytometry customers have had success using Donkey Anti-Rabbit IgG H&amp;L (Alexa Fluor® 680), ab175772 in these applications.</p> <p>Alexa Fluor® is a registered trademark of Molecular Probes, Inc, a Thermo Fisher Scientific Company. The Alexa Fluor® dye included in this product is provided under an intellectual property license from Life Technologies Corporation. As this product contains the Alexa Fluor® dye, the purchase of this product conveys to the buyer the non-transferable right to use the purchased product and components of the product only in research conducted by the buyer (whether the buyer is an academic or for-profit entity). As this product contains the Alexa Fluor® dye the sale of this product is expressly conditioned on the buyer not using the product or its components, or any materials made using the product or its components, in any activity to generate revenue, which may include, but is not limited to use of the product or its components: (i) in manufacturing; (ii) to provide a service, information, or data in return for payment (iii) for therapeutic, diagnostic or prophylactic purposes; or (iv) for resale, regardless of whether they are sold for use in research.</p>

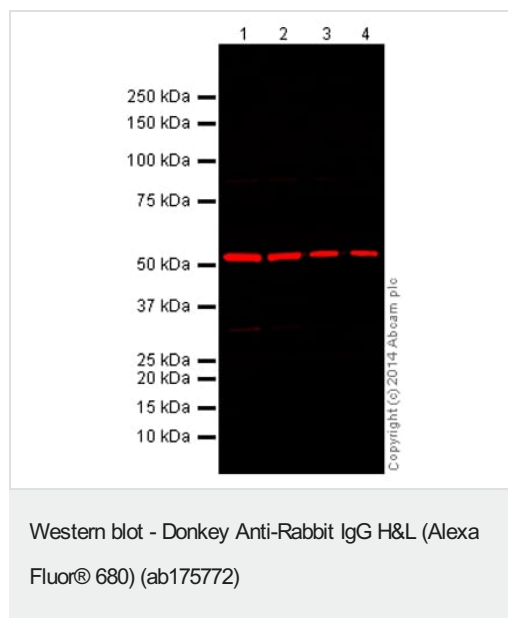
For information on purchasing a license to this product for purposes other than research, contact Life Technologies Corporation, 5781 Van Allen Way, Carlsbad, CA 92008 USA or [outlicensing@thermofisher.com](mailto:outlicensing@thermofisher.com).

## アプリケーション

**The Abpromise guarantee** Abpromise保証は、次のテスト済みアプリケーションにおけるab175772の使用に適用されます  
アプリケーションノートには、推奨の開始希釈率がありますが、適切な希釈率につきましてはご検討ください。

アプリケーション	Abreviews	特記事項
WB	★★★★★ (2)	1/10000.

## 画像



**All lanes :** Anti-alpha Tubulin antibody - Microtubule Marker  
([ab18251](#)) at 1 µg/ml

**Lane 1 :** HeLa (Human epithelial carcinoma cell line) Whole Cell  
Lysate at 10 µg

**Lane 2 :** HeLa (Human epithelial carcinoma cell line) Whole Cell  
Lysate at 5 µg

**Lane 3 :** HeLa (Human epithelial carcinoma cell line) Whole Cell  
Lysate at 2 µg

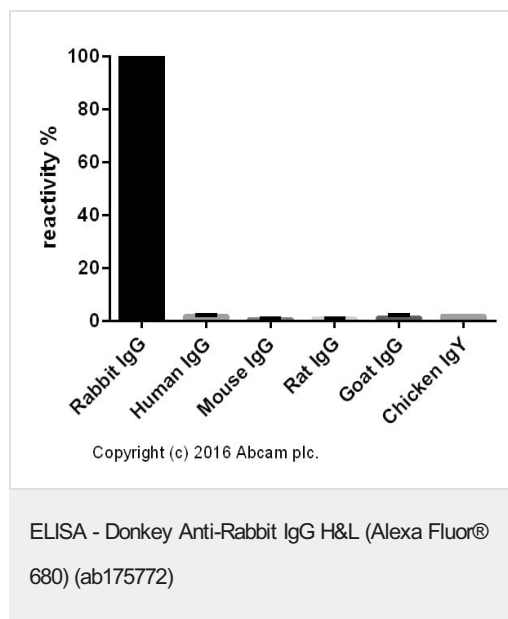
**Lane 4 :** HeLa (Human epithelial carcinoma cell line) Whole Cell  
Lysate at 1 µg

### Secondary

**All lanes :** Donkey Anti-Rabbit IgG H&L (Alexa Fluor® 680)  
(ab175772) at 1/10000 dilution

**Observed band size:** 52 kDa

This blot was produced using a 4-12% Bis-tris gel under the MOPS buffer system. The gel was run at 200V for 50 minutes before being transferred onto a Nitrocellulose membrane at 30V for 70 minutes. The membrane was then blocked for an hour using 5% Milk before being incubated with [ab18251](#) overnight at 4°C. Antibody binding was detected using ab175772 at a 1:10,000 dilution for 1hr at room temperature and then imaged using the Licor Odyssey CLx.



Cross-reactivity of the polyclonal secondary antibody **ab182020** was tested using a sandwich ELISA approach. The wells were coated with the indicated IgG standards at 1 µg/ml (50 µl/well) and incubated overnight at 4°C, followed by a 5% BSA blocking step for 2h at RT. **ab182020** was then added starting at 1 µg/ml and gradually diluted 1/4 (50 µl/well), followed by incubation for 2h. For the detection Goat anti-Donkey IgG H&L (HRP) (**ab6988**) was used at 1/20,000 dilution (50 µl/well), followed by incubation for 1h at RT.

**For the batch tested, ab182020 showed a cross-reactivity below 2% towards human IgG, mouse IgG, rat IgG, goat IgG and chicken IgY.**

This data was developed using the unconjugated antibody (**ab182020**).

**Please note:** All products are "FOR RESEARCH USE ONLY. NOT FOR USE IN DIAGNOSTIC PROCEDURES"

### Our Abpromise to you: Quality guaranteed and expert technical support

- Replacement or refund for products not performing as stated on the datasheet
- Valid for 12 months from date of delivery
- Response to your inquiry within 24 hours
- We provide support in Chinese, English, French, German, Japanese and Spanish
- Extensive multi-media technical resources to help you
- We investigate all quality concerns to ensure our products perform to the highest standards

If the product does not perform as described on this datasheet, we will offer a refund or replacement. For full details of the Abpromise, please visit <https://www.abcam.co.jp/abpromise> or contact our technical team.

### Terms and conditions

- Guarantee only valid for products bought direct from Abcam or one of our authorized distributors