

### VEGFA peptide ab46160

[3 References](#) [画像数 1](#)

#### 製品の詳細

---

製品名	VEGFA peptide
精製度	> 90 % HPLC.
アクセッション番号	<b><u>P15692</u></b>
Animal free	No
由来	Synthetic
生物種	Human
製品の詳細	Human VEGFA peptide

#### 特性

---

Our **Abpromise guarantee** covers the use of **ab46160** in the following tested applications.

The application notes include recommended starting dilutions; optimal dilutions/concentrations should be determined by the end user.

アプリケーション	Blocking - Blocking peptide for Anti-VEGFA antibody ( <b><u>ab46154</u></b> )
製品の状態	Liquid
備考	<ul style="list-style-type: none"><li>- First try to dissolve a small amount of peptide in either water or buffer. The more charged residues on a peptide, the more soluble it is in aqueous solutions.</li><li>- If the peptide doesn't dissolve try an organic solvent e.g. DMSO, then dilute using water or buffer.</li><li>- Consider that any solvent used must be compatible with your assay. If a peptide does not dissolve and you need to recover it, lyophilise to remove the solvent.</li><li>- Gentle warming and sonication can effectively aid peptide solubilisation. If the solution is cloudy or has gelled the peptide may be in suspension rather than solubilised.</li><li>- Peptides containing cysteine are easily oxidised, so should be prepared in solution just prior to use.</li></ul>

#### 前処理および保存

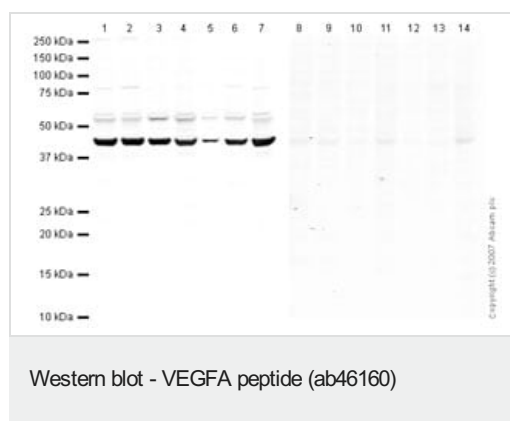
---

保存方法および安定性	Shipped at 4°C. Upon delivery aliquot and store at -20°C or -80°C. Avoid repeated freeze / thaw cycles. Information available upon request.
------------	--

## 関連情報

<b>機能</b>	Growth factor active in angiogenesis, vasculogenesis and endothelial cell growth. Induces endothelial cell proliferation, promotes cell migration, inhibits apoptosis and induces permeabilization of blood vessels. Binds to the FLT1/VEGFR1 and KDR/VEGFR2 receptors, heparan sulfate and heparin. NRP1/Neuropilin-1 binds isoforms VEGF-165 and VEGF-145. Isoform VEGF165B binds to KDR but does not activate downstream signaling pathways, does not activate angiogenesis and inhibits tumor growth.
<b>組織特異性</b>	Isoform VEGF189, isoform VEGF165 and isoform VEGF121 are widely expressed. Isoform VEGF206 and isoform VEGF145 are not widely expressed.
<b>関連疾患</b>	Defects in VEGFA are a cause of susceptibility to microvascular complications of diabetes type 1 (MVCD1) [MIM:603933]. These are pathological conditions that develop in numerous tissues and organs as a consequence of diabetes mellitus. They include diabetic retinopathy, diabetic nephropathy leading to end-stage renal disease, and diabetic neuropathy. Diabetic retinopathy remains the major cause of new-onset blindness among diabetic adults. It is characterized by vascular permeability and increased tissue ischemia and angiogenesis.
<b>配列類似性</b>	Belongs to the PDGF/VEGF growth factor family.
<b>細胞内局在</b>	Secreted. VEGF121 is acidic and freely secreted. VEGF165 is more basic, has heparin-binding properties and, although a significant proportion remains cell-associated, most is freely secreted. VEGF189 is very basic, it is cell-associated after secretion and is bound avidly by heparin and the extracellular matrix, although it may be released as a soluble form by heparin, heparinase or plasmin.

## 画像



**All lanes :** Anti-VEGFA antibody ([ab46154](#)) at 0.5 µg/ml

**Lane 1 :** HeLa (Human epithelial carcinoma cell line) Whole Cell Lysate

**Lane 2 :** Jurkat whole cell lysate ([ab7899](#))

**Lane 3 :** A-431 whole cell lysate ([ab7909](#))

**Lane 4 :** HEK-293 whole cell lysate ([ab7902](#))

**Lane 5 :** Hep G2 whole cell lysate ([ab7900](#))

**Lane 6 :** MCF7 (Human breast adenocarcinoma cell line) Whole Cell Lysate

**Lane 7 :** SHSY-5Y (Human neuroblastoma cell line) Whole Cell Lysate

**Lane 8 :** HeLa (Human epithelial carcinoma cell line) Whole Cell Lysate with VEGFA peptide (ab46160) at 1 µg/ml

**Lane 9 :** Jurkat whole cell lysate ([ab7899](#)) with VEGFA peptide (ab46160) at 1 µg/ml

**Lane 10 :** A-431 whole cell lysate ([ab7909](#)) with VEGFA peptide (ab46160) at 1 µg/ml

**Lane 11 :** HEK-293 whole cell lysate ([ab7902](#)) with VEGFA

peptide (ab46160) at 1 µg/ml

**Lane 12** : Hep G2 whole cell lysate (**ab7900**) with VEGFA peptide (ab46160) at 1 µg/ml

**Lane 13** : MCF7 (Human breast adenocarcinoma cell line) Whole Cell Lysate with VEGFA peptide (ab46160) at 1 µg/ml

**Lane 14** : SHSY-5Y (Human neuroblastoma cell line) Whole Cell Lysate with VEGFA peptide (ab46160) at 1 µg/ml

Lysates/proteins at 10 µg per lane.

#### **Secondary**

**All lanes** : IRDye 680 Conjugated Goat Anti-Rabbit IgG (H+L) at 1/10000 dilution

Performed under reducing conditions.

**Please note:** All products are "FOR RESEARCH USE ONLY. NOT FOR USE IN DIAGNOSTIC PROCEDURES"

#### **Our Abpromise to you: Quality guaranteed and expert technical support**

---

- Replacement or refund for products not performing as stated on the datasheet
- Valid for 12 months from date of delivery
- Response to your inquiry within 24 hours
- We provide support in Chinese, English, French, German, Japanese and Spanish
- Extensive multi-media technical resources to help you
- We investigate all quality concerns to ensure our products perform to the highest standards

If the product does not perform as described on this datasheet, we will offer a refund or replacement. For full details of the Abpromise, please visit <https://www.abcam.co.jp/abpromise> or contact our technical team.

#### **Terms and conditions**

---

- Guarantee only valid for products bought direct from Abcam or one of our authorized distributors