

# Recombinant rat CXCL1/GRO alpha protein ab9773

### 画像数 1

#### 製品の詳細

---

製品名	Recombinant rat CXCL1/GRO alpha protein
精製度	> 98 % SDS-PAGE. Endotoxin level is less than 0.1 ng per g (1EU/g).
発現系	Escherichia coli
アクセッション番号	<b>P14095</b>
タンパク質長	Full length protein
Animal free	No
由来	Recombinant
生物種	Rat
配列	APVANELRCQCLQTVAGIHFKNIQSLKVMP PGPHCTQTEVIATLKNGREACLDPEAPMVQ KIVQKMLKGVPK
予測される分子量	11 kDa
領域	25 to 96

#### 特性

---

Our **Abpromise guarantee** covers the use of **ab9773** in the following tested applications.

The application notes include recommended starting dilutions; optimal dilutions/concentrations should be determined by the end user.

アプリケーション	Functional Studies SDS-PAGE Western blot
製品の状態	Lyophilized
備考	The maximal chemotactic activity of rat CXCL1/GRO alpha on rat neutrophils was determined by its ability to chemoattract rat neutrophils using a concentration range of 10.0-100.0 ng/ml.

#### 前処理および保存

---

保存方法および安定性	Shipped at 4°C. Store at +4°C short term (1-2 weeks). Upon delivery aliquot. Store at -20°C or -80°C. Avoid freeze / thaw cycle.
------------	--

This product is an active protein and may elicit a biological response in vivo, handle with caution.

## 再構成

For lot specific reconstitution information please contact our Scientific Support Team.

## 関連情報

### 機能

Has chemotactic activity for neutrophils. May play a role in inflammation and exerts its effects on endothelial cells in an autocrine fashion. In vitro, the processed forms GRO-alpha(4-73), GRO-alpha(5-73) and GRO-alpha(6-73) show a 30-fold higher chemotactic activity.

### 配列類似性

Belongs to the intercrine alpha (chemokine CxC) family.

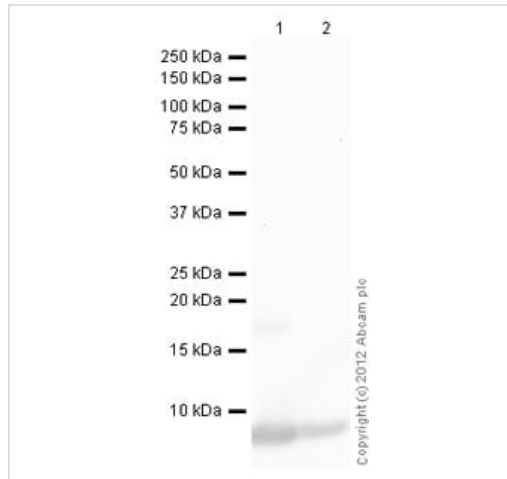
### 翻訳後修飾

N-terminal processed forms GRO-alpha(4-73), GRO-alpha(5-73) and GRO-alpha(6-73) are produced by proteolytic cleavage after secretion from peripheral blood monocytes.

### 細胞内局在

Secreted.

## 画像



Western blot - Recombinant rat CXCL1/GRO alpha protein (ab9773)

**All lanes :** Anti-CXCL1/GRO alpha antibody ([ab86436](#)) at 0.5 µg/ml

**Lane 1 :** Recombinant rat CXCL1/GRO alpha protein (ab9773) at 0.1 µg

**Lane 2 :** Recombinant rat CXCL1/GRO alpha protein (ab9773) at 0.01 µg

### Secondary

**All lanes :** Goat Anti-Rabbit IgG H&L (HRP) preadsorbed ([ab97080](#)) at 1/5000 dilution

Developed using the ECL technique.

Performed under reducing conditions.

**Exposure time:** 1 minute

**Please note:** All products are "FOR RESEARCH USE ONLY. NOT FOR USE IN DIAGNOSTIC PROCEDURES"

## Our Abpromise to you: Quality guaranteed and expert technical support

- Replacement or refund for products not performing as stated on the datasheet
- Valid for 12 months from date of delivery
- Response to your inquiry within 24 hours
- We provide support in Chinese, English, French, German, Japanese and Spanish
- Extensive multi-media technical resources to help you

- We investigate all quality concerns to ensure our products perform to the highest standards

If the product does not perform as described on this datasheet, we will offer a refund or replacement. For full details of the Abpromise, please visit <https://www.abcam.co.jp/abpromise> or contact our technical team.

#### **Terms and conditions**

---

- Guarantee only valid for products bought direct from Abcam or one of our authorized distributors