

# Recombinant mouse PIM3 protein ab125561

画像数 2

カルタヘナ法

### 製品の詳細

製品名	Recombinant mouse PIM3 protein
生理活性	The specific activity of ab125561 is 785 nmol/min/mg.
精製度	> 90 % Densitometry. ab125561 is >90% pure.
発現系	Baculovirus infected Sf9 cells
アクセッション番号	<b>P58750</b>
タンパク質長	Full length protein
Animal free	No
由来	Recombinant
生物種	Mouse
予測される分子量	63 kDa including tags
領域	1 to 326

### 特性

Our **Abpromise guarantee** covers the use of **ab125561** in the following tested applications.

The application notes include recommended starting dilutions; optimal dilutions/concentrations should be determined by the end user.

アプリケーション	Western blot Functional Studies SDS-PAGE
製品の状態	Liquid
備考	<b>ab204879</b> (RPS6 peptide) can be utilized as a substrate for assessing kinase activity

### 前処理および保存

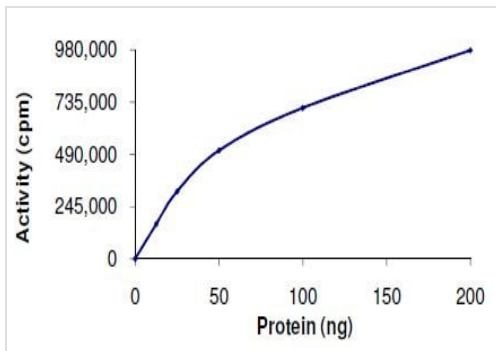
保存方法および安定性	Shipped on dry ice. Upon delivery aliquot and store at -80°C. Avoid freeze / thaw cycles. pH: 7.50 Constituents: 0.31% Glutathione, 0.002% PMSF, 0.004% DTT, 0.79% Tris HCl, 0.003% EDTA, 25% Glycerol (glycerin, glycerine), 0.88% Sodium chloride
------------	---

This product is an active protein and may elicit a biological response in vivo, handle with caution.

## 関連情報

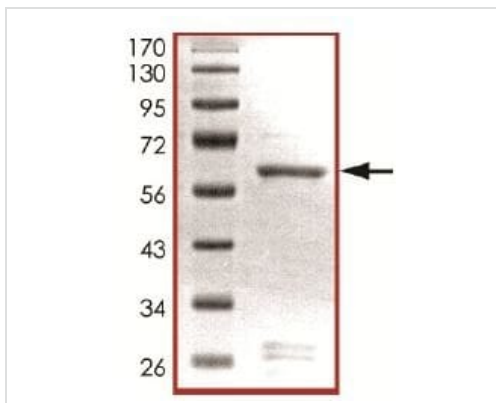
機能	Able to phosphorylate CDKN1B in vitro. Involved in cell cycle progression and suppression of apoptosis. Implicated in proliferation of human hepatoma cell lines.
組織特異性	Widely expressed. No expression in colon, thymus, and small intestine. Expressed in human hepatoma cell lines but not in normal liver tissues. Expressed in colon cancer samples, particularly at the less advanced stages of cancer development.
配列類似性	Belongs to the protein kinase superfamily. CAMK Ser/Thr protein kinase family. PIM subfamily. Contains 1 protein kinase domain.

## 画像



Functional Studies - Recombinant mouse PIM3 protein (ab125561)

The specific activity of ab125561 was determined to be 785 nmol/min/mg.



SDS-PAGE - Recombinant mouse PIM3 protein (ab125561)

SDS PAGE analysis of ab125561 (PIM3 protein).

**Please note:** All products are "FOR RESEARCH USE ONLY. NOT FOR USE IN DIAGNOSTIC PROCEDURES"

**Our Abpromise to you: Quality guaranteed and expert technical support**

- Replacement or refund for products not performing as stated on the datasheet
- Valid for 12 months from date of delivery
- Response to your inquiry within 24 hours
  
- We provide support in Chinese, English, French, German, Japanese and Spanish
- Extensive multi-media technical resources to help you
- We investigate all quality concerns to ensure our products perform to the highest standards

If the product does not perform as described on this datasheet, we will offer a refund or replacement. For full details of the Abpromise, please visit <https://www.abcam.co.jp/abpromise> or contact our technical team.

### **Terms and conditions**

---

- Guarantee only valid for products bought direct from Abcam or one of our authorized distributors