

Recombinant mouse JNK3 protein ab119734

画像数 5

製品の詳細

製品名	Recombinant mouse JNK3 protein
生理活性	Specific Activity: 35 nmol/min/mg
精製度	> 80 % SDS-PAGE. Purity determined to be >80% by densitometry. Affinity purified.
発現系	Baculovirus infected Sf9 cells
アクセッション番号	<u>Q61831</u>
タンパク質長	Full length protein
Animal free	No
由来	Recombinant
生物種	Mouse
予測される分子量	71 kDa including tags
領域	1 to 464

特性

Our **Abpromise guarantee** covers the use of **ab119734** in the following tested applications.

The application notes include recommended starting dilutions; optimal dilutions/concentrations should be determined by the end user.

アプリケーション	Western blot
	Functional Studies
	SDS-PAGE
製品の状態	Liquid

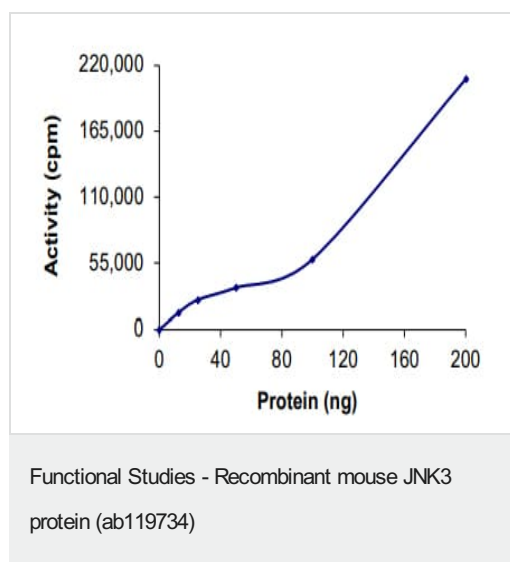
前処理および保存

保存方法および安定性	Shipped on dry ice. Upon delivery aliquot and store at -80°C. Avoid freeze / thaw cycles.
	pH: 7.50
	Constituents: 0.31% Glutathione, 0.002% PMSF, 0.004% DTT, 0.79% Tris HCl, 0.003% EDTA, 25% Glycerol (glycerin, glycerine), 0.88% Sodium chloride
	This product is an active protein and may elicit a biological response in vivo, handle with caution.

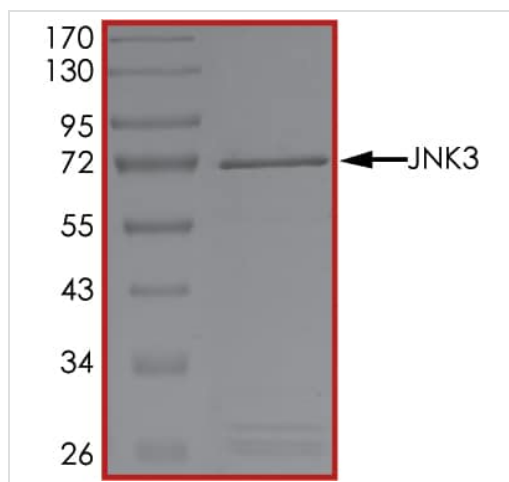
関連情報

機能	Responds to activation by environmental stress and pro-inflammatory cytokines by phosphorylating a number of transcription factors, primarily components of AP-1 such as c-Jun and ATF2 and thus regulates AP-1 transcriptional activity. Required for stress-induced neuronal apoptosis and the pathogenesis of glutamate excitotoxicity.
組織特異性	Specific to a subset of neurons in the nervous system. Present in the hippocampus and areas, cerebellum, striatum, brain stem, and weakly in the spinal cord. Very weak expression in testis and kidney.
関連疾患	Defects in MAPK10 are a cause of epileptic encephalopathy Lennox-Gastaut type (EELG) [MIM:606369]. Epileptic encephalopathies of the Lennox-Gastaut group are childhood epileptic disorders characterized by severe psychomotor delay and seizures. Note=A chromosomal aberration involving MAPK10 has been found in a single patient. Translocation t(Y;4)(q11.2;q21) which causes MAPK10 truncation.
配列類似性	Belongs to the protein kinase superfamily. CMGC Ser/Thr protein kinase family. MAP kinase subfamily. Contains 1 protein kinase domain.
ドメイン	The TXY motif contains the threonine and tyrosine residues whose phosphorylation activates the MAP kinases.
翻訳後修飾	Dually phosphorylated on Thr-221 and Tyr-223, which activates the enzyme. Weakly autophosphorylated on threonine and tyrosine residues in vitro.
細胞内局在	Cytoplasm.

画像

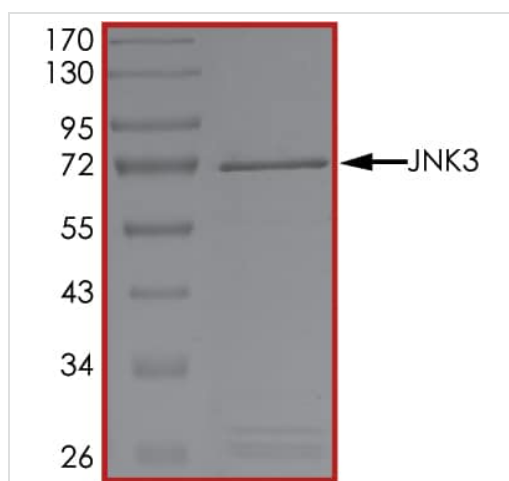


The specific activity of JNK3 (ab119734) was determined to be 30 nmol/min/mg as per activity assay protocol



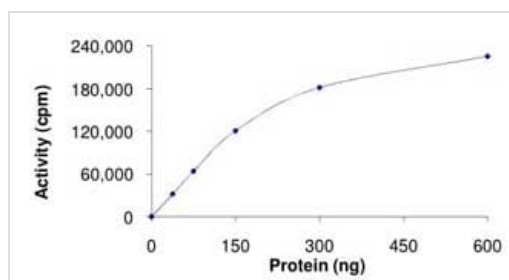
SDS PAGE analysis of ab119734

SDS-PAGE - Recombinant mouse JNK3 protein
(ab119734)



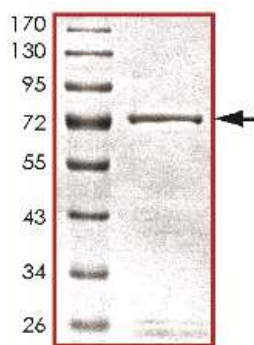
SDS PAGE analysis of ab119734

SDS-PAGE - Recombinant mouse JNK3 protein
(ab119734)



The specific activity of ab119734 was determined to be 35
nmol/min/mg.

Functional Studies - Recombinant mouse JNK3
protein (ab119734)



SDS-PAGE analysis of **ab119374**.

SDS-PAGE - Recombinant mouse JNK3 protein
(ab119734)

Please note: All products are "FOR RESEARCH USE ONLY. NOT FOR USE IN DIAGNOSTIC PROCEDURES"

Our Abpromise to you: Quality guaranteed and expert technical support

- Replacement or refund for products not performing as stated on the datasheet
- Valid for 12 months from date of delivery
- Response to your inquiry within 24 hours
- We provide support in Chinese, English, French, German, Japanese and Spanish
- Extensive multi-media technical resources to help you
- We investigate all quality concerns to ensure our products perform to the highest standards

If the product does not perform as described on this datasheet, we will offer a refund or replacement. For full details of the Abpromise, please visit <https://www.abcam.co.jp/abpromise> or contact our technical team.

Terms and conditions

- Guarantee only valid for products bought direct from Abcam or one of our authorized distributors