

### Recombinant mouse IL-31 protein ab119155

画像数 2

#### 製品の詳細

製品名	Recombinant mouse IL-31 protein
生理活性	The activity is determined by the dose dependent production of IL-8 from human PBMCs and is typically less than 25 ng/mL.
精製度	> 95 % SDS-PAGE. Protein content and purity of ab119155 was determined by UV spectroscopy at 280 nm, RP-HPLC calibrated against a known standard and quantitation against a known standard via reducing and non-reducing SDS-PAGE gels. Purified using standard chromatographical techniques.
エンドトキシン・レベル	< 0.100 Eu/μg
発現系	Escherichia coli
アクセッション番号	<b><u>Q6EAL8</u></b>
タンパク質長	Full length protein
Animal free	No
由来	Recombinant
生物種	Mouse
配列	MTCSLSFGAPISKEDLRTTIDLLKQESQDLYNNYSIKQASGM SADESIQL PCFSLDREALTNISVIIAHLEKVKVLSNTVDTSWVIRWLTN ISCFNPLN LNISVPGNTDESYDCKVFVLTVLKQFSNCMAELQAKDNTTC
予測される分子量	16 kDa
領域	24 to 163

#### 特性

Our **Abpromise guarantee** covers the use of **ab119155** in the following tested applications.

The application notes include recommended starting dilutions; optimal dilutions/concentrations should be determined by the end user.

アプリケーション	SDS-PAGE HPLC
製品の状態	Lyophilized
備考	It is recommended that a carrier protein (0.1% HSA or BSA) is added for long term storage.

## 前処理および保存

### 保存方法および安定性

Shipped at 4°C. After reconstitution store at -20°C. Avoid freeze / thaw cycles.

Constituent: 0.14% Sodium phosphate

This product is an active protein and may elicit a biological response in vivo, handle with caution.

### 再構成

Lyophilized product is very stable at -20°C. Centrifuge vial before opening. When reconstituting, gently pipette and wash down the sides of the vial to ensure full recovery of the protein into solution. It is recommended to reconstitute ab119155 with sterile water at a concentration of 0.1 mg/ml, which can be further diluted into other aqueous solutions.

## 関連情報

### 機能

Activates STAT3 and possibly STAT1 and STAT5 through the IL31 heterodimeric receptor composed of IL31RA and OSMR. IL31 may function in skin immunity.

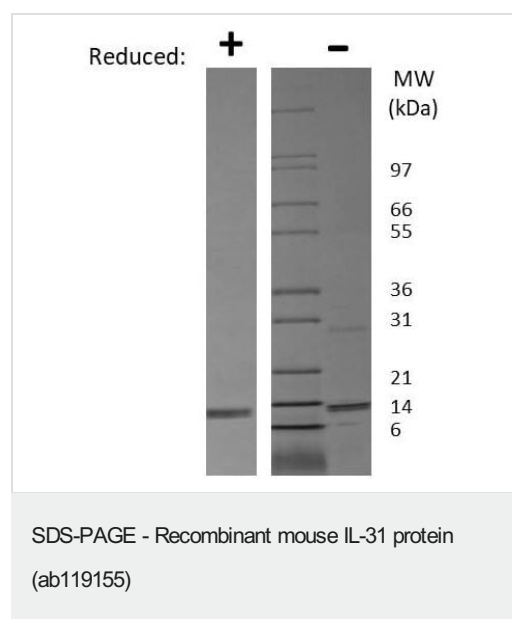
### 組織特異性

Detected at low levels in testis, bone marrow, skeletal muscle, kidney, colon, thymus, small intestine and trachea.

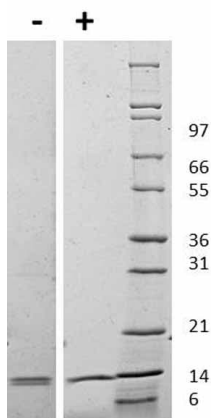
### 細胞内局在

Secreted.

## 画像



SDS PAGE analysis of ab119155 under non-reducing (-) and reducing (+) conditions. Stained with Coomassie Blue.



ab119155 used in Western Blot. Figure: 1 ug run under (+) reducing conditions and (-) non-reducing conditions in a 4-20% Tris-Glycine gel stained with Coomassie Blue. Mouse IL-31 has a predicted MW of 15.7 kDa.

Western blot - Recombinant mouse IL-31 protein (ab119155)

**Please note:** All products are "FOR RESEARCH USE ONLY. NOT FOR USE IN DIAGNOSTIC PROCEDURES"

### Our Abpromise to you: Quality guaranteed and expert technical support

- Replacement or refund for products not performing as stated on the datasheet
- Valid for 12 months from date of delivery
- Response to your inquiry within 24 hours
- We provide support in Chinese, English, French, German, Japanese and Spanish
- Extensive multi-media technical resources to help you
- We investigate all quality concerns to ensure our products perform to the highest standards

If the product does not perform as described on this datasheet, we will offer a refund or replacement. For full details of the Abpromise, please visit <https://www.abcam.co.jp/abpromise> or contact our technical team.

### Terms and conditions

- Guarantee only valid for products bought direct from Abcam or one of our authorized distributors