

Recombinant mouse Hsp60 protein ab92364

1 References [画像数 3](#)

製品の詳細

製品名	Recombinant mouse Hsp60 protein
生理活性	ATPase Activity Assay: Positive
精製度	> 90 % SDS-PAGE. >90% pure as determined by SDS-PAGE and Western blot analyses. This protein does not contain E. coli GroEL as demonstrated by western blot analysis.
発現系	Escherichia coli
タンパク質長	Full length protein
Animal free	No
由来	Recombinant
生物種	Mouse

特性

Our **Abpromise guarantee** covers the use of **ab92364** in the following tested applications.

The application notes include recommended starting dilutions; optimal dilutions/concentrations should be determined by the end user.

アプリケーション	Western blot Functional Studies SDS-PAGE
製品の状態	Liquid

前処理および保存

保存方法および安定性	Shipped on dry ice. Upon delivery aliquot and store at -80°C. Avoid freeze / thaw cycles. Constituents: 0.0154% (R*,R*)-1,4-Dimercaptobutan-2,3-diol, 0.158% Tris HCl, 0.0292% EDTA, 0.87% Sodium chloride This product is an active protein and may elicit a biological response in vivo, handle with caution.
------------	---

関連情報

機能	Implicated in mitochondrial protein import and macromolecular assembly. May facilitate the
----	--

correct folding of imported proteins. May also prevent misfolding and promote the refolding and proper assembly of unfolded polypeptides generated under stress conditions in the mitochondrial matrix.

関連疾患

Defects in HSPD1 are a cause of spastic paraplegia autosomal dominant type 13 (SPG13) [MIM:605280]. Spastic paraplegia is a degenerative spinal cord disorder characterized by a slow, gradual, progressive weakness and spasticity of the lower limbs.

Defects in HSPD1 are the cause of leukodystrophy hypomyelinating type 4 (HLD4) [MIM:612233]; also called mitochondrial HSP60 chaperonopathy or MitCHAP-60 disease. HLD4 is a severe autosomal recessive hypomyelinating leukodystrophy. Clinically characterized by infantile-onset rotary nystagmus, progressive spastic paraplegia, neurologic regression, motor impairment, profound mental retardation. Death usually occurs within the first two decades of life.

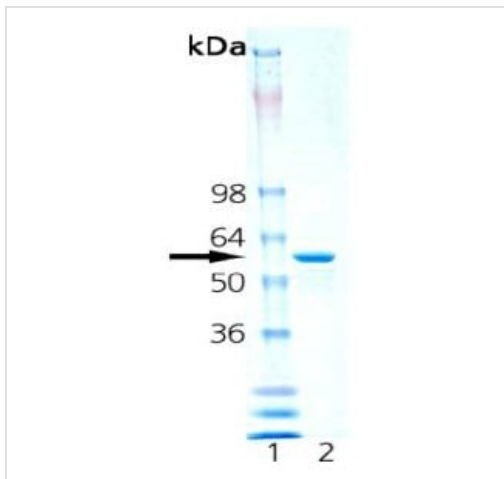
配列類似性

Belongs to the chaperonin (HSP60) family.

細胞内局在

Mitochondrion matrix.

画像

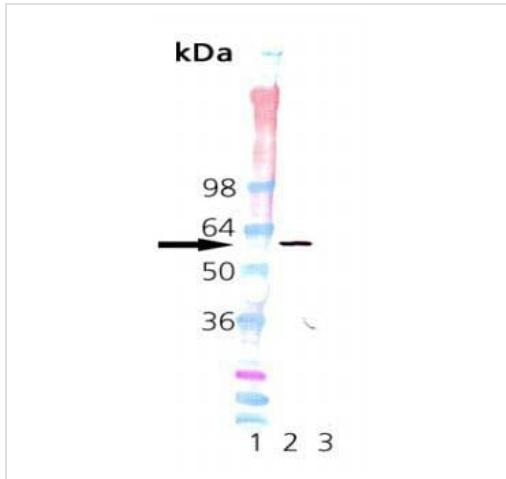


SDS-PAGE Analysis:

Lane 1: Molecular weight markers

Lane 2: ab92364 at 2.0 μ g

SDS-PAGE - Recombinant mouse Hsp60 protein
(ab92364)



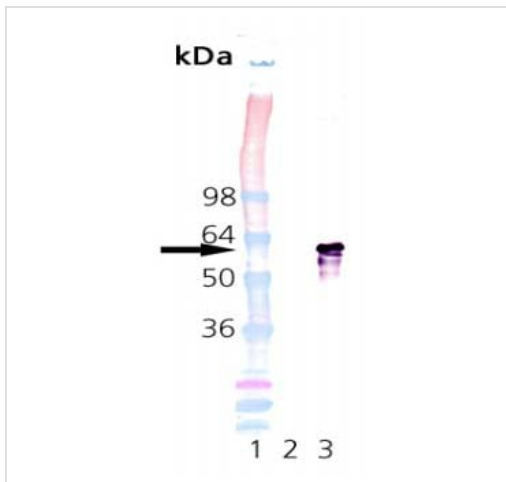
Western blot - Recombinant mouse Hsp60 protein (ab92364)

All lanes : Hsp60 monoclonal antibody at 1 µg/ml

Lane 1 : Molecular weight markers

Lane 2 : ab92364 at 0.1 µg

Lane 3 : E. coli GroEL Protein at 0.1 µg



Western blot - Recombinant mouse Hsp60 protein (ab92364)

All lanes : GroEL monoclonal antibody at 1 µg/ml

Lane 1 : Molecular weight markers

Lane 2 : ab92364 at 0.1 µg

Lane 3 : E. coli GroEL Protein at 0.1 µg

Please note: All products are "FOR RESEARCH USE ONLY. NOT FOR USE IN DIAGNOSTIC PROCEDURES"

Our Abpromise to you: Quality guaranteed and expert technical support

- Replacement or refund for products not performing as stated on the datasheet
- Valid for 12 months from date of delivery
- Response to your inquiry within 24 hours
- We provide support in Chinese, English, French, German, Japanese and Spanish
- Extensive multi-media technical resources to help you
- We investigate all quality concerns to ensure our products perform to the highest standards

If the product does not perform as described on this datasheet, we will offer a refund or replacement. For full details of the Abpromise, please visit <https://www.abcam.co.jp/abpromise> or contact our technical team.

Terms and conditions

- Guarantee only valid for products bought direct from Abcam or one of our authorized distributors