

Recombinant mouse Eph receptor A1/EphA1 protein ab55900

画像数 4

製品の詳細

製品名	Recombinant mouse Eph receptor A1/EphA1 protein
生理活性	Specific activity : 32 nmol/min/mg.
精製度	> 85 % Densitometry. Affinity purified.
発現系	Baculovirus infected Sf9 cells
アクセッション番号	<u>Q60750</u>
タンパク質長	Protein fragment
Animal free	No
由来	Recombinant
生物種	Mouse
予測される分子量	71 kDa
領域	569 to 977
タグ	GST tag N-Terminus
配列の追加情報	Recombinant fragment, corresponding to amino acids 569-end of Mouse Eph receptor A1.

特性

Our **Abpromise guarantee** covers the use of **ab55900** in the following tested applications.

The application notes include recommended starting dilutions; optimal dilutions/concentrations should be determined by the end user.

アプリケーション	Functional Studies SDS-PAGE
製品の状態	Liquid
備考	<u>ab204877</u> (Poly (4:1 Glu, Tyr) peptide) can be utilized as a substrate for assessing kinase activity Previously labelled as Eph receptor A1.

前処理および保存

保存方法および安定性	Shipped on dry ice. Upon delivery aliquot and store at -80°C. Avoid freeze / thaw cycles. pH: 7.50 Constituents: 0.0038% EGTA, 0.00174% PMSF, 0.00385% DTT, 0.79% Tris HCl, 0.00292%
------------	--

EDTA, 25% Glycerol (glycerin, glycerine), 0.87% Sodium chloride

This product is an active protein and may elicit a biological response in vivo, handle with caution.

関連情報

機能

Receptor tyrosine kinase which binds promiscuously membrane-bound ephrin-A family ligands residing on adjacent cells, leading to contact-dependent bidirectional signaling into neighboring cells. The signaling pathway downstream of the receptor is referred to as forward signaling while the signaling pathway downstream of the ephrin ligand is referred to as reverse signaling. Binds with a low affinity EFNA3 and EFNA4 and with a high affinity to EFNA1 which most probably constitutes its cognate/functional ligand. Upon activation by EFNA1 induces cell attachment to the extracellular matrix inhibiting cell spreading and motility through regulation of ILK and downstream RHOA and RAC. Plays also a role in angiogenesis and regulates cell proliferation. May play a role in apoptosis.

組織特異性

Overexpressed in several carcinomas.

配列類似性

Belongs to the protein kinase superfamily. Tyr protein kinase family. Ephrin receptor subfamily. Contains 1 Eph LBD (Eph ligand-binding) domain. Contains 2 fibronectin type-III domains. Contains 1 protein kinase domain. Contains 1 SAM (sterile alpha motif) domain.

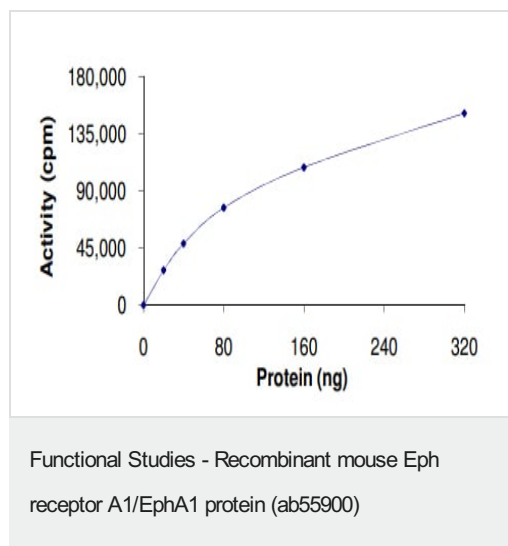
翻訳後修飾

Phosphorylated. Autophosphorylation is stimulated by its ligand EFNA1. Ubiquitinated.

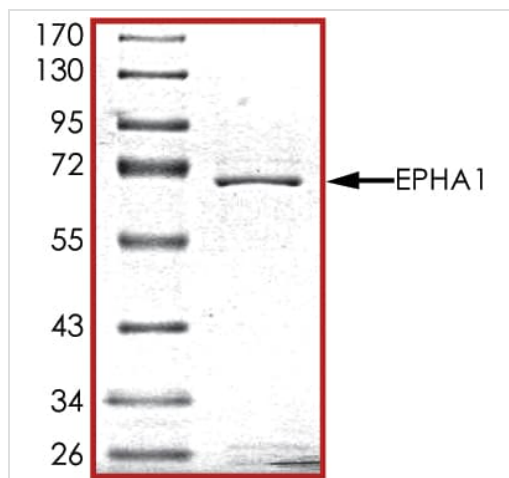
細胞内局在

Cell membrane.

画像

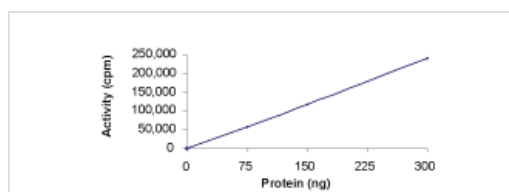


The specific activity of Eph receptor A1/EphA1 (ab55900) was determined to be 36 nmol/min/mg as per activity assay protocol



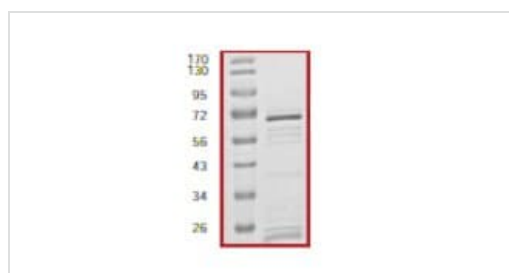
SDS PAGE analysis of ab55900

SDS-PAGE - Recombinant mouse Eph receptor
A1/EphA1 protein (ab55900)



Kinase assay using ab55900.

Functional Studies - Recombinant mouse Eph
receptor A1/EphA1 protein (ab55900)



ab55900 on SDS-PAGE.

SDS-PAGE - Recombinant mouse Eph receptor
A1/EphA1 protein (ab55900)

Please note: All products are "FOR RESEARCH USE ONLY. NOT FOR USE IN DIAGNOSTIC PROCEDURES"

Our Abpromise to you: Quality guaranteed and expert technical support

- Replacement or refund for products not performing as stated on the datasheet

- Valid for 12 months from date of delivery
- Response to your inquiry within 24 hours
- We provide support in Chinese, English, French, German, Japanese and Spanish
- Extensive multi-media technical resources to help you
- We investigate all quality concerns to ensure our products perform to the highest standards

If the product does not perform as described on this datasheet, we will offer a refund or replacement. For full details of the Abpromise, please visit <https://www.abcam.co.jp/abpromise> or contact our technical team.

Terms and conditions

- Guarantee only valid for products bought direct from Abcam or one of our authorized distributors