

### Recombinant Human WDR68 protein (denatured) ab111624

画像数 1

#### 製品の詳細

製品名	Recombinant Human WDR68 protein (denatured)
精製度	> 90 % SDS-PAGE. ab111624 was denatured using detergent during conventional chromatography purification process.
発現系	Escherichia coli
アクセッション番号	<b>P61962</b>
タンパク質長	Protein fragment
Animal free	No
由来	Recombinant
生物種	Human
配列	<p><b>MGSSHHHHHHSSGLVPRGSHMVYAMNWSVRPDKRFRLALG</b></p> <p><b>SFVEEYNNKV</b></p> <p><b>QLVGLDEESSEFICRNTFDHPYPTTKLMWIPDTKGVYPDLLA</b></p> <p><b>TSGDYLRV</b></p> <p><b>WRVGETETRLECLLNNNKNSDFCAPLTSFDWNEVDPYLLGTS</b></p> <p><b>SIDTTCTI</b></p> <p><b>WGLGTGQVLGRVNLVSGHVKTQLIAHDKEVYDIAFSRAGGGR</b></p> <p><b>DMFASVGA</b></p> <p><b>DGSVRMFDLRHLEHSTIIYEDPQHHPLLRLCWNKQDPNYLAT</b></p> <p><b>MAMDGMEV</b></p> <p><b>VILDVRVPCTPVARLNNHRACVNGIAWAPHSSCHICTAADDH</b></p> <p><b>QALIWD</b></p>
予測される分子量	34 kDa
領域	19 to 295
タグ	His tag N-Terminus
製品の詳細	Recombinant Human WDR68 protein

#### 特性

Our **Abpromise guarantee** covers the use of **ab111624** in the following tested applications.

The application notes include recommended starting dilutions; optimal dilutions/concentrations should be determined by the end user.

アプリケーション                      SDS-PAGE

## 製品の状態

Liquid

## 前処理および保存

### 保存方法および安定性

Shipped at 4°C. Upon delivery aliquot and store at -20°C or -80°C. Avoid repeated freeze / thaw cycles.

pH: 8.00

Constituents: 2.4% Urea, 0.02% DTT, 0.32% Tris HCl

## 関連情報

### 機能

Involved in craniofacial development. Acts upstream of the EDN1 pathway and is required for formation of the upper jaw equivalent, the palatoquadrate. The activity required for EDN1 pathway function differs between the first and second arches (By similarity). Associates with DIAPH1 and controls GLI1 transcriptional activity. Could be involved in normal and disease skin development. May function as a substrate receptor for CUL4-DDB1 E3 ubiquitin-protein ligase complex.

### パスウェイ

Protein modification; protein ubiquitination.

### 配列類似性

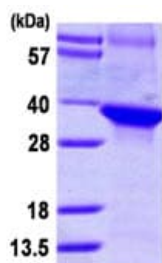
Belongs to the WD repeat DCAF7 family.

Contains 4 WD repeats.

### 細胞内局在

Cytoplasm. Nucleus. Overexpression of DIAHP1 or active RHOA causes translocation from the nucleus to cytoplasm.

## 画像



15% SDS-PAGE showing ab111624 at approximately 33.6kDa (3μg).

SDS-PAGE - Recombinant Human WDR68 protein  
(denatured) (ab111624)

**Please note:** All products are "FOR RESEARCH USE ONLY. NOT FOR USE IN DIAGNOSTIC PROCEDURES"

## Our Abpromise to you: Quality guaranteed and expert technical support

- Replacement or refund for products not performing as stated on the datasheet
- Valid for 12 months from date of delivery
- Response to your inquiry within 24 hours
- We provide support in Chinese, English, French, German, Japanese and Spanish

- Extensive multi-media technical resources to help you
- We investigate all quality concerns to ensure our products perform to the highest standards

If the product does not perform as described on this datasheet, we will offer a refund or replacement. For full details of the Abpromise, please visit <https://www.abcam.co.jp/abpromise> or contact our technical team.

#### **Terms and conditions**

---

- Guarantee only valid for products bought direct from Abcam or one of our authorized distributors