

Recombinant human VEGF Receptor 3 protein ab95247

画像数 2

製品の詳細

製品名	Recombinant human VEGF Receptor 3 protein
生理活性	Specific Activity: 17 pmol/min/μg. Assay conditions: VEGFR3 was incubated with a substrate (Tyr peptide 4 for 1h at RT in 1Xkinase buffer supplemented with ATP. Developer solution was added to reaction and reaction was stopped after 1h of incubation at RT.
精製度	> 70 % SDS-PAGE. Affinity purified.
発現系	Baculovirus infected insect cells
タンパク質長	Protein fragment
Animal free	No
由来	Recombinant
生物種	Human
領域	798 to 1298
タグ	GST tag N-Terminus

特性

Our **Abpromise guarantee** covers the use of **ab95247** in the following tested applications.

The application notes include recommended starting dilutions; optimal dilutions/concentrations should be determined by the end user.

アプリケーション	SDS-PAGE Functional Studies
製品の状態	Liquid

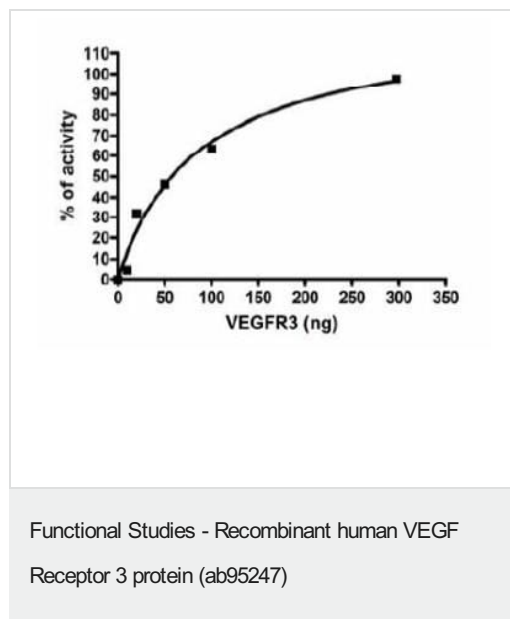
前処理および保存

保存方法および安定性	Shipped on Dry Ice. Upon delivery aliquot. Store at -80°C. Avoid freeze / thaw cycle. pH: 8.00 Constituents: 0.0462% (R*,R*)-1,4-Dimercaptobutan-2,3-diol, 0.395% Tris HCl, 0.05% Tween, 20% Glycerol (glycerin, glycerine), 0.8004% Sodium chloride This product is an active protein and may elicit a biological response in vivo, handle with caution.
------------	--

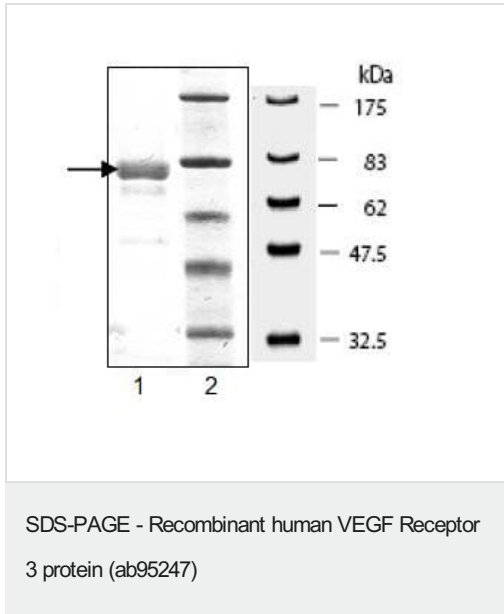
関連情報

機能	Receptor for VEGFC. Has a tyrosine-protein kinase activity.
組織特異性	Placenta, lung, heart, and kidney, does not seem to be expressed in pancreas and brain.
関連疾患	Defects in FLT4 are the cause of lymphedema hereditary type 1A (LMPH1A) [MIM:153100]; also known as Nonne-Milroy lymphedema or Milroy disease. Hereditary lymphedema is a chronic disabling condition which results in swelling of the extremities due to altered lymphatic flow. Patients with lymphedema suffer from recurrent local infections and physical impairment. Note=Defects in FLT4 are found in juvenile hemangioma. Juvenile hemangiomas are the most common tumors of infancy, occurring as many as 10% of all births. These benign vascular lesions enlarge rapidly during the first year of life by hyperplasia of endothelial cells and attendant pericytes, and then spontaneously involute over a period of years, leaving loose fibrofatty tissue.
配列類似性	Belongs to the protein kinase superfamily. Tyr protein kinase family. CSF-1/PDGF receptor subfamily. Contains 7 Ig-like C2-type (immunoglobulin-like) domains. Contains 1 protein kinase domain.
細胞内局在	Membrane.

画像



The specific activity of ab95247 was found to be 17 pmol/min/μg by carrying out functional studies. The assay conditions were; VEGFR3 was incubated with a substrate (Tyr peptide 4) for 1h at RT in 1Xkinase buffer supplemented with ATP. Developer solution was added to reaction and reaction was stopped after 1h of incubation at RT.



ab95247 was analysed by SDS-PAGE. Lane 1; ab95247 at 4 μ g. Lane 2; protein molecular weight markers. ab95247 has a predicted molecular weight of 82 kDa and is >70% pure as assessed by SDS-PAGE.

Please note: All products are "FOR RESEARCH USE ONLY. NOT FOR USE IN DIAGNOSTIC PROCEDURES"

Our Abpromise to you: Quality guaranteed and expert technical support

- Replacement or refund for products not performing as stated on the datasheet
- Valid for 12 months from date of delivery
- Response to your inquiry within 24 hours
- We provide support in Chinese, English, French, German, Japanese and Spanish
- Extensive multi-media technical resources to help you
- We investigate all quality concerns to ensure our products perform to the highest standards

If the product does not perform as described on this datasheet, we will offer a refund or replacement. For full details of the Abpromise, please visit <https://www.abcam.co.jp/abpromise> or contact our technical team.

Terms and conditions

- Guarantee only valid for products bought direct from Abcam or one of our authorized distributors