

### Recombinant Human UBE2S protein ab87756

画像数 1

#### 製品の詳細

製品名	Recombinant Human UBE2S protein
精製度	> 90 % SDS-PAGE. ab87756 was purified using conventional chromatography techniques.
発現系	Escherichia coli
タンパク質長	Full length protein
Animal free	No
由来	Recombinant
生物種	Human
配列	<p>MRGSHHHHHH GMASMTGGQQ MGRDLYDDDD</p> <p>KDRWGSMSNS VENLPPHIIR LVYKEVTTLT</p> <p>ADPPDGIKVF PNEEDLTDLQ VTIEGPEGTP</p> <p>YAGGLFRMKL LLGKDFPASP PKGYFLTKIF</p> <p>HPNVGANGEI CVNVLKRDT AELGIRHVLL</p> <p>TIKCLLIHPN PESALNEEAG RLLLENYEEY</p> <p>AARARLLTEI HGGAGGPSGR AEAGRALASG</p> <p>TEASSTDPGA PGGPGGAEGP MAKKHAGERD</p> <p>KKLAAKKKTD KKRALLRRL</p>

#### 特性

Our **Abpromise guarantee** covers the use of **ab87756** in the following tested applications.

The application notes include recommended starting dilutions; optimal dilutions/concentrations should be determined by the end user.

アプリケーション	SDS-PAGE
製品の状態	Liquid

#### 前処理および保存

保存方法および安定性	<p>Shipped at 4°C. Upon delivery aliquot and store at -20°C or -80°C. Avoid repeated freeze / thaw cycles.</p> <p>pH: 8.00</p> <p>Constituents: 0.0154% DTT, 0.316% Tris HCl, 20% Glycerol (glycerin, glycerine)</p>
------------	--

## 関連情報

### 機能

Accepts ubiquitin from the E1 complex and catalyzes its covalent attachment to other proteins. Catalyzes 'Lys-11'-linked polyubiquitination. Acts as an essential factor of the anaphase promoting complex/cyclosome (APC/C), a cell cycle-regulated ubiquitin ligase that controls progression through mitosis. Acts by specifically elongating 'Lys-11'-linked polyubiquitin chains initiated by the E2 enzyme UBE2C/UBCH10 on APC/C substrates, enhancing the degradation of APC/C substrates by the proteasome and promoting mitotic exit. Also acts by elongating ubiquitin chains initiated by the E2 enzyme UBE2D1/UBCH5 in vitro; it is however unclear whether UBE2D1/UBCH5 acts as a E2 enzyme for the APC/C in vivo. Also involved in ubiquitination and subsequent degradation of VHL, resulting in an accumulation of HIF1A. In vitro able to promote polyubiquitination using all 7 ubiquitin Lys residues, except 'Lys-48'-linked polyubiquitination.

### パスウェイ

Protein modification; protein ubiquitination.

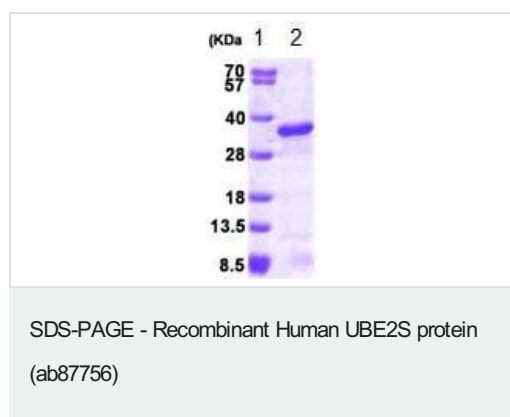
### 配列類似性

Belongs to the ubiquitin-conjugating enzyme family.

### 翻訳後修飾

Autoubiquitinated by the APC/C complex during G1, leading to its degradation by the proteasome.

## 画像



15% SDS-PAGE analysis of 3µg ab87756.

**Please note:** All products are "FOR RESEARCH USE ONLY. NOT FOR USE IN DIAGNOSTIC PROCEDURES"

## Our Abpromise to you: Quality guaranteed and expert technical support

- Replacement or refund for products not performing as stated on the datasheet
- Valid for 12 months from date of delivery
- Response to your inquiry within 24 hours
- We provide support in Chinese, English, French, German, Japanese and Spanish
- Extensive multi-media technical resources to help you
- We investigate all quality concerns to ensure our products perform to the highest standards

If the product does not perform as described on this datasheet, we will offer a refund or replacement. For full details of the Abpromise, please visit <https://www.abcam.co.jp/abpromise> or contact our technical team.

## Terms and conditions

---

- Guarantee only valid for products bought direct from Abcam or one of our authorized distributors