

# Recombinant Human UBA5 protein ab124609

画像数 1

### 製品の詳細

製品名	Recombinant Human UBA5 protein
精製度	> 90 % SDS-PAGE. ab124609 is purified by using conventional chromatography techniques.
発現系	Escherichia coli
アクセッション番号	<u><a href="#">Q9GZZ9</a></u>
タンパク質長	Full length protein
Animal free	No
由来	Recombinant
生物種	Human

配列

```
MGSSHHHHH SSGLVPRGSH MGSHEMAESVE
RLQQRVQELE RELAQERSLQ VPRSGDGGGG
RVRIEKMSSE VVDSNPYSRL MALKRMGIVS
DYEKIRTFV AIVGVGGVGS VTAEMLTRCG
IGKLLFDYD KVELANMNL FFQPHQAGLS
KVQAAEHLR NINPDVLFV HNYNITTVEN
FQHFMDRISN GGLEEGKPV LVLSCVDNFE
ARMTINTACN ELGQTMESG VSENAVSGHI
QLIIPGESAC FACAPPLVVA ANIDEKTLKR
EGVCAASLPT TMGVVAGILV QNVLKFLNLF
GTVSFYLGYN AMQDFPTMS MKPNPQCDDR
NCRKQEEYK KKVAALPKQE VIQEEEEIIH
EDNEWGIELV SEVSEELKN FSGPVPDLPE
GITVAYTIPK KQEDSVTELT VEDSGESLED LMAKMKNM
```

予測される分子量	47 kDa including tags
領域	1 to 404
タグ	His tag N-Terminus

### 特性

Our **Abpromise guarantee** covers the use of **ab124609** in the following tested applications.

The application notes include recommended starting dilutions; optimal dilutions/concentrations should be determined by the end user.

アプリケーション SDS-PAGE

Mass Spectrometry

質量分析

MALDI-TOF

製品の状態

Liquid

#### 前処理および保存

保存方法および安定性

Shipped at 4°C. Store at +4°C short term (1-2 weeks). Upon delivery aliquot. Store at -20°C or -80°C. Avoid freeze / thaw cycle.

pH: 8.00

Constituents: 0.02% DTT, 0.32% Tris HCl, 10% Glycerol (glycerin, glycerine), 0.29% Sodium chloride

#### 関連情報

機能

E1-like enzyme which activates UFM1 and SUMO2.

組織特異性

Widely expressed.

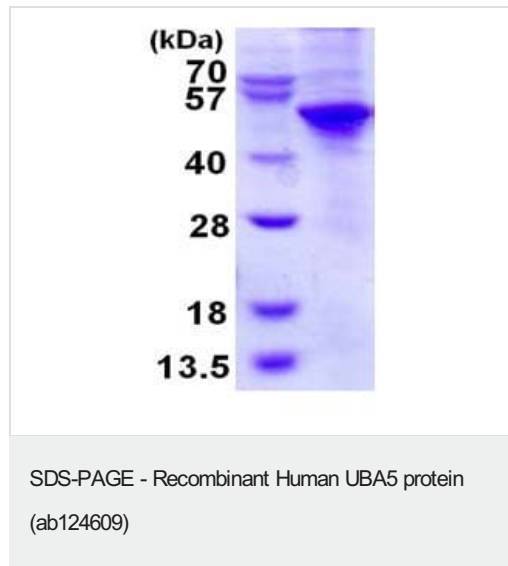
配列類似性

Belongs to the ubiquitin-activating E1 family. UBA5 subfamily.

細胞内局在

Cytoplasm. Nucleus. Localizes mainly in cytoplasm, while it mainly localizes to the nucleus in presence of SUMO2.

#### 画像



15% SDS-PAGE showing ab124609 (3 µg).

**Please note:** All products are "FOR RESEARCH USE ONLY. NOT FOR USE IN DIAGNOSTIC PROCEDURES"

#### Our Abpromise to you: Quality guaranteed and expert technical support

- Replacement or refund for products not performing as stated on the datasheet
- Valid for 12 months from date of delivery

- Response to your inquiry within 24 hours
- We provide support in Chinese, English, French, German, Japanese and Spanish
- Extensive multi-media technical resources to help you
- We investigate all quality concerns to ensure our products perform to the highest standards

If the product does not perform as described on this datasheet, we will offer a refund or replacement. For full details of the Abpromise, please visit <https://www.abcam.co.jp/abpromise> or contact our technical team.

### **Terms and conditions**

---

- Guarantee only valid for products bought direct from Abcam or one of our authorized distributors