

### Recombinant Human TWF1/Twinfilin-1 protein ab116148

画像数 1

#### 製品の詳細

製品名	Recombinant Human TWF1/Twinfilin-1 protein
精製度	> 80 % SDS-PAGE. purified by using conventional chromatography
発現系	Escherichia coli
アクセッション番号	<b><u>Q12792</u></b>
タンパク質長	Protein fragment
Animal free	No
由来	Recombinant
生物種	Human
配列	MGSSHHHHHH SSGLVPRGSH MGSHM MLYAA TRATLKKEFG GGHIKDEVFG TVKEDVSLHG YKKYLLSQSS PAPLTAAEEE LRQIKINEVQ TDVGVDTKHQ TLQGVAFPI S REAFQALEKL NNRQLNYVQL EIDIKNEIII LANTTNTELK DLPKRIPKDS ARYHFFLYKH SHEGDYLESI VFIYSMPGYT CSIRERMLYS SCKSRLLLEIV ERQLQMDVIR KIEIDNGDEL TADFLYEEVH PKQHAHKQSF AKPKGPGAGKR GIRRLIRGPA ETEATTD
予測される分子量	32 kDa including tags
領域	100 to 350
タグ	His tag N-Terminus

#### 特性

Our **Abpromise guarantee** covers the use of **ab116148** in the following tested applications.

The application notes include recommended starting dilutions; optimal dilutions/concentrations should be determined by the end user.

アプリケーション	SDS-PAGE
質量分析	MALDI-TOF
製品の状態	Liquid
備考	This product was previously labelled as TWF1

## 前処理および保存

### 保存方法および安定性

Shipped at 4°C. Store at +4°C short term (1-2 weeks). Upon delivery aliquot. Store at -20°C or -80°C. Avoid freeze / thaw cycle.

pH: 8.00

Constituents: 0.02% DTT, 0.32% Tris HCl, 40% Glycerol (glycerin, glycerine), 0.88% Sodium chloride

## 関連情報

### 機能

Actin-binding protein involved in motile and morphological processes. Inhibits actin polymerization, likely by sequestering G-actin. By capping the barbed ends of filaments, it also regulates motility. Seems to play an important role in clathrin-mediated endocytosis and distribution of endocytic organelles.

### 組織特異性

Expressed at high levels in the colon, testis, ovary, prostate and lung. Expressed at lower levels in the brain, bladder and heart. Not detected in liver.

### 配列類似性

Belongs to the actin-binding proteins ADF family. Twinfilin subfamily.  
Contains 2 ADF-H domains.

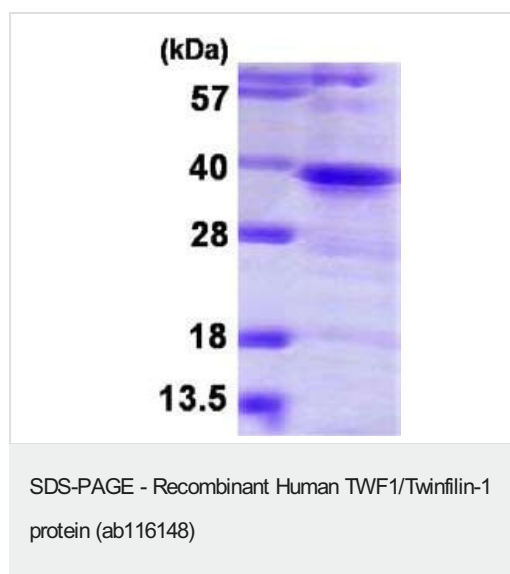
### 翻訳後修飾

Phosphorylated on serine and threonine residues.

### 細胞内局在

Cytoplasm. Cytoplasm > cytoskeleton. Diffuse cytoplasmic localization with perinuclear and G-actin-rich cortical actin structures sublocalization. Also found at membrane ruffles and cell-cell contacts.

## 画像



15% SDS-PAGE showing ab116148 at approximately 31.5kDa (3μg)

**Please note:** All products are "FOR RESEARCH USE ONLY. NOT FOR USE IN DIAGNOSTIC PROCEDURES"

**Our Abpromise to you: Quality guaranteed and expert technical support**

- Replacement or refund for products not performing as stated on the datasheet
- Valid for 12 months from date of delivery
- Response to your inquiry within 24 hours
  
- We provide support in Chinese, English, French, German, Japanese and Spanish
- Extensive multi-media technical resources to help you
- We investigate all quality concerns to ensure our products perform to the highest standards

If the product does not perform as described on this datasheet, we will offer a refund or replacement. For full details of the Abpromise, please visit <https://www.abcam.co.jp/abpromise> or contact our technical team.

#### **Terms and conditions**

---

- Guarantee only valid for products bought direct from Abcam or one of our authorized distributors