

# Recombinant Human Thymidine Phosphorylase protein ab101169

画像数 1

### 製品の詳細

製品名	Recombinant Human Thymidine Phosphorylase protein
精製度	> 95 % SDS-PAGE. ab101169 is purified using conventional chromatography techniques.
発現系	Escherichia coli
アクセッション番号	<b><u>P19971</u></b>
タンパク質長	Full length protein
Animal free	No
由来	Recombinant
生物種	Human
配列	<b>MGSSHHHHHSSGLVPRGSHMAPPAPGDFSGEGSQGLPDP SPEPKQLPEL IRMKRDGGRLSEADIRGFVAAVVNGSAQGAQIGAMLMAIRLR GMDLEETS VLTQALAQSGQQLWPEAWRQQLVDKHSTGGVGDVSLVLAP ALAACGCK VPMISGRGLGHTGGTLDKLESIPGFNVIQSPEQMQLLDQAG CCIVGQSE QLVPADGILYAARDVTATVDSLPLITASILSKKLVEGLSALV VDVKFGGA AVFPNQEQAARELAKTLVGVGASLGLRVAAALTAMDKPLGRCV GHAEVEE ALLCMDGAGPPDLRDLVTTLGGALLWLSGHAGTQAQGAARVA AALDDGSA LGRFERMLAAQGVDPGLARALCSGSPAERRQLLPRAREQEEL LAPADGTV ELVRLPLALVLHELGAGRSRAGEPLRLGVGAELLVDVGQRL RRGTPWLR VHRDGPALSGPQSRAEQEALVLSRAPFAAPSPFAELVLPQ Q</b>
予測される分子量	51 kDa including tags
領域	11 to 482
タグ	His tag N-Terminus

## 特性

Our **Abpromise guarantee** covers the use of **ab101169** in the following tested applications.

The application notes include recommended starting dilutions; optimal dilutions/concentrations should be determined by the end user.

アプリケーション	SDS-PAGE Mass Spectrometry
質量分析	MALDI-TOF
製品の状態	Liquid

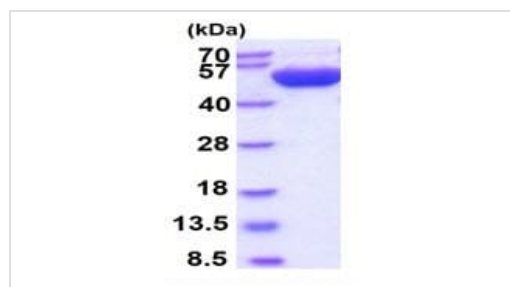
## 前処理および保存

保存方法および安定性	Shipped at 4°C. Upon delivery aliquot and store at -20°C or -80°C. Avoid repeated freeze / thaw cycles. pH: 8.00 Constituents: 0.0154% DTT, 0.316% Tris HCl, 10% Glycerol (glycerin, glycerine)
------------	---

## 関連情報

機能	May have a role in maintaining the integrity of the blood vessels. Has growth promoting activity on endothelial cells, angiogenic activity in vivo and chemotactic activity on endothelial cells in vitro. Catalyzes the reversible phosphorolysis of thymidine. The produced molecules are then utilized as carbon and energy sources or in the rescue of pyrimidine bases for nucleotide synthesis.
パスウェイ	Pyrimidine metabolism; dTMP biosynthesis via salvage pathway; dTMP from thymine: step 1/2.
関連疾患	Mitochondrial DNA depletion syndrome 1 (MTDPS1) [MIM:603041]: A multisystem disease associated with mitochondrial dysfunction. It is clinically characterized by onset between the second and fifth decades of life, ptosis, progressive external ophthalmoplegia, gastrointestinal dysmotility (often pseudoobstruction), diffuse leukoencephalopathy, cachexia, peripheral neuropathy, and myopathy. Note=The disease is caused by mutations affecting the gene represented in this entry.
配列類似性	Belongs to the thymidine/pyrimidine-nucleoside phosphorylase family.

## 画像



15% SDS-PAGE showing ab101169 at approximately 51.3kDa (3µg).

SDS-PAGE - Recombinant Human Thymidine  
Phosphorylase protein (ab101169)

**Please note:** All products are "FOR RESEARCH USE ONLY. NOT FOR USE IN DIAGNOSTIC PROCEDURES"

### **Our Abpromise to you: Quality guaranteed and expert technical support**

---

- Replacement or refund for products not performing as stated on the datasheet
- Valid for 12 months from date of delivery
- Response to your inquiry within 24 hours
  
- We provide support in Chinese, English, French, German, Japanese and Spanish
- Extensive multi-media technical resources to help you
- We investigate all quality concerns to ensure our products perform to the highest standards

If the product does not perform as described on this datasheet, we will offer a refund or replacement. For full details of the Abpromise, please visit <https://www.abcam.co.jp/abpromise> or contact our technical team.

### **Terms and conditions**

---

- Guarantee only valid for products bought direct from Abcam or one of our authorized distributors