

Recombinant human TGF beta 1 protein (Active) ab50036

44 References 画像数 1

製品の詳細

製品名	Recombinant human TGF beta 1 protein (Active)
生理活性	The ED ₅₀ , as determined by TGF-beta1's ability to inhibit the mouse IL-4-dependent proliferation of mouse HT-2 cells, is ≤ 0.05 ng/ml), corresponding to a specific activity of ≥ 2 x 10 ⁷ units/mg.
精製度	> 98 % SDS-PAGE. > 98% by HPLC analyses. Endotoxin Level: < 0.1 ng/μg of protein (< 1 EU/μg).
エンドトキシン・レベル	< 1.000 EU/μg
発現系	HEK 293 cells
アクセッション番号	P01137
タンパク質長	Protein fragment
Animal free	No
由来	Recombinant
生物種	Human
配列	ALDTNYCFSS TEKNCCVRQL YIDFRKDLGW KWIHEPKGYH ANFCLGPCPY IWSLDTQYSK VLALYNQHNP GASAAPCCVP QALEPLPIVY YVGRKPKVEQ LSNMIVRSCK CS
予測される分子量	25 kDa
領域	279 to 390
配列の追加情報	TGF-beta1 is a 25.0 kDa protein with each subunit containing 112 aa, linked by a single disulfide bond. It is the mature protein after cleavage of the signal peptide and latency-associated peptide.

特性

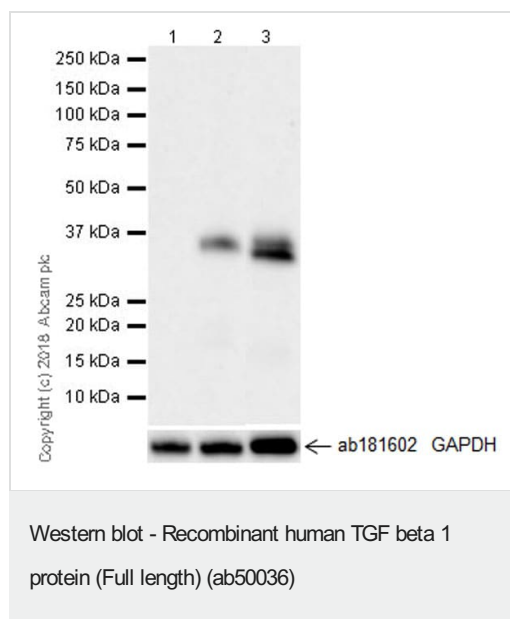
Our **Abpromise guarantee** covers the use of **ab50036** in the following tested applications.

The application notes include recommended starting dilutions; optimal dilutions/concentrations should be determined by the end user.

アプリケーション	HPLC
	Cell Culture
	SDS-PAGE
	Functional Studies
	Western blot

製品の状態	Lyophilized
備考	<p>TGF-beta is secreted predominantly as latent complexes which are stored at the cell surface and in the extracellular matrix.</p> <p>The release of biologically active TGF-β isoform from a latent complex involves proteolytic processing of the complex and /or induction of conformational changes by proteins such as thrombospondin-1.</p> <p>TGF-β1 is the most abundant isoform secreted by almost every cell type.</p>
前処理および保存	
保存方法および安定性	<p>Shipped at 4°C. Upon delivery aliquot. Store at -20°C or -80°C. Avoid freeze / thaw cycle.</p> <p>This product is an active protein and may elicit a biological response in vivo, handle with caution.</p>
再構成	<p>Centrifuge the vial prior to opening. Reconstitute in 10mM Citric Acid, pH3.0 to a concentration of 50 µg/ml (e.g. 5 µg/100µl). This solution can then be stored at 4oC to 8oC for up to 1 week or prepared for extended storage. It is recommended that further dilutions be made in PBS with 0.1% BSA and stored at -20oC for future use.</p>
関連情報	
機能	<p>Multifunctional protein that controls proliferation, differentiation and other functions in many cell types. Many cells synthesize TGFB1 and have specific receptors for it. It positively and negatively regulates many other growth factors. It plays an important role in bone remodeling as it is a potent stimulator of osteoblastic bone formation, causing chemotaxis, proliferation and differentiation in committed osteoblasts.</p>
組織特異性	<p>Highly expressed in bone. Abundantly expressed in articular cartilage and chondrocytes and is increased in osteoarthritis (OA). Co-localizes with ASPN in chondrocytes within OA lesions of articular cartilage.</p>
関連疾患	<p>Defects in TGFB1 are the cause of Camurati-Engelmann disease (CE) [MIM:131300]; also known as progressive diaphyseal dysplasia 1 (DPD1). CE is an autosomal dominant disorder characterized by hyperostosis and sclerosis of the diaphyses of long bones. The disease typically presents in early childhood with pain, muscular weakness and waddling gait, and in some cases other features such as exophthalmos, facial paralysis, hearing difficulties and loss of vision.</p>
配列類似性	<p>Belongs to the TGF-beta family.</p>
翻訳後修飾	<p>Glycosylated.</p> <p>The precursor is cleaved into mature TGF-beta-1 and LAP, which remains non-covalently linked to mature TGF-beta-1 rendering it inactive.</p>
細胞内局在	<p>Secreted > extracellular space > extracellular matrix.</p>

画像



All lanes : Anti-CTGF antibody [EPR20728] (**ab209780**) at 1/1000 dilution

Lane 1 : NIH/3T3 (mouse embryonic fibroblast) starved for 18 hours, whole cell lysate

Lane 2 : NIH/3T3 starved for 18 hours, then treated with 10 ng/ml transforming growth factor- β (TGF- β 1, ab50036) and 50 μ g/ml Heparin sodium salt for 24 hours, whole cell lysate

Lane 3 : HepG2 (human hepatocellular carcinoma epithelial cell), whole cell lysate

Lysates/proteins at 20 μ g per lane.

Secondary

All lanes : Goat Anti-Rabbit IgG H&L (HRP) (**ab97051**) at 1/100000 dilution

Blocking/Dilution buffer and concentration: 5% NFDM/TBST.

The level of CTGF expression can be induced by TGF beta treatment (PMID: 17786299).

CTGF is constitutively expressed in HepG2 cells (PMID:15886528).

Please note: All products are "FOR RESEARCH USE ONLY. NOT FOR USE IN DIAGNOSTIC PROCEDURES"

Our Abpromise to you: Quality guaranteed and expert technical support

- Replacement or refund for products not performing as stated on the datasheet
- Valid for 12 months from date of delivery
- Response to your inquiry within 24 hours
- We provide support in Chinese, English, French, German, Japanese and Spanish
- Extensive multi-media technical resources to help you
- We investigate all quality concerns to ensure our products perform to the highest standards

If the product does not perform as described on this datasheet, we will offer a refund or replacement. For full details of the Abpromise, please visit <https://www.abcam.co.jp/abpromise> or contact our technical team.

Terms and conditions

- Guarantee only valid for products bought direct from Abcam or one of our authorized distributors