

## Recombinant Human TFEB protein ab152831

画像数 1

### 製品の詳細

製品名	Recombinant Human TFEB protein
発現系	Wheat germ
アクセッション番号	<b>P19484</b>
タンパク質長	Full length protein
Animal free	No
由来	Recombinant
生物種	Human
配列	<p>MASRIGLRMQLMREQAQQEEQRRERMQQQAVMHYMQQQQQQQQ</p> <p>QQLGGPPT</p> <p>PAINTPVHFQSPPPVPGEVLKVQSYLENPTSYHLQQSQHQKV</p> <p>REYLSETY</p> <p>GNKFAAHISPAQGSPKPPPAASPGVRAGHVLSSSAGNSAPNS</p> <p>PMAMLHIG</p> <p>SNPERELDDVIDNIMRLDDVLGYINPEMQMPNTLPLSSSHLN</p> <p>VYSSDPQV</p> <p>TASLVGVTSSSCPADLTQKRELDAESRALAKERQKKDNHNL</p> <p>IERRRRFN</p> <p>INDRIKELGMLIPKANDLDVRWNKGITLKASVDYIRRMQKDL</p> <p>QKSRELEN</p> <p>HSRRLEMTNKQLWLRIQELEMQARVHGLPTTSPSGMNMAELA</p> <p>QQVVKQEL</p> <p>PSEEGPGEALMLGAEVPDPEPLPALPPQAPLPLPTQPPSPFH</p> <p>HLDFFSHSL</p> <p>SFGGREDEGPPGYPEPLAPGHGSPFPSLSKKDLMLLDDSL</p> <p>LPLASDPL LSTMSPEASKASSRRSSFSMEEGDVL</p>
予測される分子量	78 kDa including tags
領域	1 to 476

### 特性

Our **Abpromise guarantee** covers the use of **ab152831** in the following tested applications.

The application notes include recommended starting dilutions; optimal dilutions/concentrations should be determined by the end user.

アプリケーション                      ELISA

	Western blot
	SDS-PAGE
製品の状態	Liquid
備考	

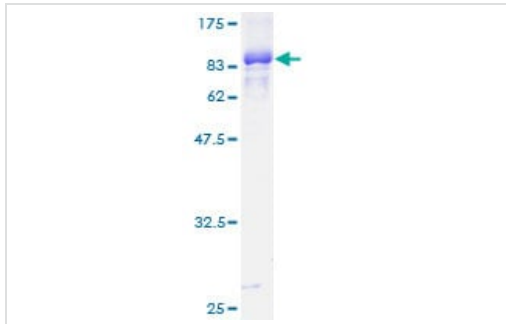
## 前処理および保存

保存方法および安定性	Shipped on dry ice. Upon delivery aliquot and store at -80°C. Avoid freeze / thaw cycles. pH: 8.00 Constituents: 0.31% Glutathione, 0.79% Tris HCl
------------	--

## 関連情報

機能	Transcription factor that specifically recognizes and binds E-box sequences (3'-CANNTG-5'). Efficient DNA-binding requires dimerization with itself or with another MiT/TFE family member such as TFE3 or MITF. In association with TFE3, activates the expression of CD40L in T-cells, thereby playing a role in T-cell-dependent antibody responses in activated CD4(+) T-cells and thymus-dependent humoral immunity. Specifically recognizes and binds the CLEAR-box sequence (5'-GTCACGTGAC-3') present in the regulatory region of many lysosomal genes, leading to activate their expression. It thereby plays a central role in expression of lysosomal genes. Specifically recognizes the gamma-E3 box, a subset of E-boxes, present in the heavy-chain immunoglobulin enhancer. Plays a role in the signal transduction processes required for normal vascularization of the placenta.
配列類似性	Belongs to the MiT/TFE family. Contains 1 basic helix-loop-helix (bHLH) domain.
ドメイン	The leucin zipper region is essential for homo- or heterodimerization and high-affinity DNA binding. DNA binding is mediated by the basic region.
翻訳後修飾	Sumoylated; does not affect dimerization with MITF.
細胞内局在	Cytoplasm. Nucleus. Mainly present in the cytoplasm. Under aberrant lysosomal storage conditions, it translocates from the cytoplasm to the nucleus.

## 画像



12.5% SDS-PAGE analysis of ab152831 stained with Coomassie Blue.

SDS-PAGE - Recombinant Human TFEB protein  
(ab152831)

**Please note:** All products are "FOR RESEARCH USE ONLY. NOT FOR USE IN DIAGNOSTIC PROCEDURES"

### Our Abpromise to you: Quality guaranteed and expert technical support

---

- Replacement or refund for products not performing as stated on the datasheet
- Valid for 12 months from date of delivery
- Response to your inquiry within 24 hours
- We provide support in Chinese, English, French, German, Japanese and Spanish
- Extensive multi-media technical resources to help you
- We investigate all quality concerns to ensure our products perform to the highest standards

If the product does not perform as described on this datasheet, we will offer a refund or replacement. For full details of the Abpromise, please visit <https://www.abcam.co.jp/abpromise> or contact our technical team.

### Terms and conditions

---

- Guarantee only valid for products bought direct from Abcam or one of our authorized distributors