

Recombinant Human Tau protein ab199583

1 References [画像数 1](#)

製品の詳細

製品名	Recombinant Human Tau protein
精製度	> 95 % SDS-PAGE. Purity greater than 95% as determined by SEC-HPLC and reducing SDS-PAGE.
エンドトキシン・レベル	< 1.000 Eu/μg
発現系	Escherichia coli
アクセッション番号	<u>P10636-8</u>
タンパク質長	Protein fragment
Animal free	No
由来	Recombinant
生物種	Human
配列	MAEPRQEFVMEHDHAGTYGLGDRKDQGGYTMHQDQEGDTDAG LKESPLQT PTEDGSEEPGSETSDAKSTPTAEDVTAPLVDEGAPGKQAAAQ PHTEIPEG TTAAEEAGIGDTPSLEDEAAGHVTQARMVSKSKDGTGSDDKKA KGADGKTK IATPRGAAPPQGKGQANATRIPAKTPPAPKTPPSSGEPPKSG DRSGYSSP GSPGTPGSRSRTPSLPTPPTREPKKVAVVRTPPKSPSSAKSR LQTAPVPM PDLKNVSKSIGSTENLKHQPGGGKVQIINKKLDLSNVQSKCG SKDNIKHV PGGGSVQIVYKPDLSKVTSKCGSLGNIHHKPGGGQVEVKSE KLDFKDRV QSKIGSLDNITHVPGGGNKKIETHKLTFRENAKAKTDHGAEI VYKSPVVS GDTSPRHLSNVSSSTGSIDMVDSPQLATLADEVASLAKQGL
予測される分子量	46 kDa
領域	1 to 441

特性

Our **Abpromise guarantee** covers the use of **ab199583** in the following tested applications.

The application notes include recommended starting dilutions; optimal dilutions/concentrations should be determined by the end user.

アプリケーション

HPLC

SDS-PAGE

製品の状態

Lyophilized

前処理および保存

保存方法および安定性

Shipped at 4°C. The lyophilized protein is stable for a few weeks at room temperature. Upon delivery aliquot. Store at -20°C or -80°C. Avoid freeze / thaw cycle.

pH: 7.4

再構成

'Lyophilized from a 0.2 μM filtered solution of PBS, pH 7.4 Always centrifuge tubes before opening. Do not mix by vortex or pipetting.

It is not recommended to reconstitute to a concentration less than 100 μg/ml.

Dissolve the lyophilized protein in 1X PBS.

Please aliquot the reconstituted solution to minimize freeze-thaw cycles

関連情報

機能

Promotes microtubule assembly and stability, and might be involved in the establishment and maintenance of neuronal polarity. The C-terminus binds axonal microtubules while the N-terminus binds neural plasma membrane components, suggesting that tau functions as a linker protein between both. Axonal polarity is predetermined by tau localization (in the neuronal cell) in the domain of the cell body defined by the centrosome. The short isoforms allow plasticity of the cytoskeleton whereas the longer isoforms may preferentially play a role in its stabilization.

組織特異性

Expressed in neurons. Isoform PNS-tau is expressed in the peripheral nervous system while the others are expressed in the central nervous system.

関連疾患

Note=In Alzheimer disease, the neuronal cytoskeleton in the brain is progressively disrupted and replaced by tangles of paired helical filaments (PHF) and straight filaments, mainly composed of hyperphosphorylated forms of TAU (PHF-TAU or AD P-TAU).

Defects in MAPT are a cause of frontotemporal dementia (FTD) [MIM:600274]; also called frontotemporal dementia (FTD), pallido-ponto-nigral degeneration (PPND) or historically termed Pick complex. This form of frontotemporal dementia is characterized by presenile dementia with behavioral changes, deterioration of cognitive capacities and loss of memory. In some cases, parkinsonian symptoms are prominent. Neuropathological changes include frontotemporal atrophy often associated with atrophy of the basal ganglia, substantia nigra, amygdala. In most cases, protein tau deposits are found in glial cells and/or neurons.

Defects in MAPT are a cause of Pick disease of the brain (PDB) [MIM:172700]. It is a rare form of dementia pathologically defined by severe atrophy, neuronal loss and gliosis. It is characterized by the occurrence of tau-positive inclusions, swollen neurons (Pick cells) and argentophilic neuronal inclusions known as Pick bodies that disproportionately affect the frontal and temporal cortical regions. Clinical features include aphasia, apraxia, confusion, anomia, memory loss and personality deterioration.

Note=Defects in MAPT are a cause of corticobasal degeneration (CBD). It is marked by extrapyramidal signs and apraxia and can be associated with memory loss. Neuropathologic features may overlap Alzheimer disease, progressive supranuclear palsy, and Parkinson disease.

Defects in MAPT are a cause of progressive supranuclear palsy type 1 (PSNP1) [MIM:601104,

260540]; also abbreviated as PSP and also known as Steele-Richardson-Olszewski syndrome. PSNP1 is characterized by akinetic-rigid syndrome, supranuclear gaze palsy, pyramidal tract dysfunction, pseudobulbar signs and cognitive capacities deterioration. Neurofibrillary tangles and gliosis but no amyloid plaques are found in diseased brains. Most cases appear to be sporadic, with a significant association with a common haplotype including the MAPT gene and the flanking regions. Familial cases show an autosomal dominant pattern of transmission with incomplete penetrance; genetic analysis of a few cases showed the occurrence of tau mutations, including a deletion of Asn-613.

配列類似性

Contains 4 Tau/MAP repeats.

発生段階

Four-repeat (type II) tau is expressed in an adult-specific manner and is not found in fetal brain, whereas three-repeat (type I) tau is found in both adult and fetal brain.

ドメイン

The tau/MAP repeat binds to tubulin. Type I isoforms contain 3 repeats while type II isoforms contain 4 repeats.

翻訳後修飾

Phosphorylation at serine and threonine residues in S-P or T-P motifs by proline-directed protein kinases (PDK: CDK1, CDK5, GSK-3, MAPK) (only 2-3 sites per protein in interphase, seven-fold increase in mitosis, and in PHF-tau), and at serine residues in K-X-G-S motifs by MAP/microtubule affinity-regulating kinase (MARK) in Alzheimer diseased brains.

Phosphorylation decreases with age. Phosphorylation within tau's repeat domain or in flanking regions seems to reduce tau's interaction with, respectively, microtubules or plasma membrane components. Phosphorylation on Ser-610, Ser-622, Ser-641 and Ser-673 in several isoforms during mitosis.

Polyubiquitinated. Requires functional TRAF6 and may provoke SQSTM1-dependent degradation by the proteasome (By similarity). PHF-tau can be modified by three different forms of polyubiquitination. 'Lys-48'-linked polyubiquitination is the major form, 'Lys-6'-linked and 'Lys-11'-linked polyubiquitination also occur.

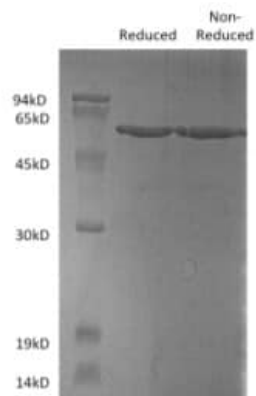
Glycation of PHF-tau, but not normal brain tau. Glycation is a non-enzymatic post-translational modification that involves a covalent linkage between a sugar and an amino group of a protein molecule forming ketoamine. Subsequent oxidation, fragmentation and/or cross-linking of ketoamine leads to the production of advanced glycation endproducts (AGES). Glycation may play a role in stabilizing PHF aggregation leading to tangle formation in AD.

細胞内局在

Cytoplasm > cytosol. Cell membrane. Cytoplasm > cytoskeleton. Cell projection > axon. Mostly found in the axons of neurons, in the cytosol and in association with plasma membrane components.

画像

SDS-PAGE with ab199583



SDS-PAGE - Recombinant Human Tau protein
(ab199583)

Please note: All products are "FOR RESEARCH USE ONLY. NOT FOR USE IN DIAGNOSTIC PROCEDURES"

Our Abpromise to you: Quality guaranteed and expert technical support

- Replacement or refund for products not performing as stated on the datasheet
- Valid for 12 months from date of delivery
- Response to your inquiry within 24 hours
- We provide support in Chinese, English, French, German, Japanese and Spanish
- Extensive multi-media technical resources to help you
- We investigate all quality concerns to ensure our products perform to the highest standards

If the product does not perform as described on this datasheet, we will offer a refund or replacement. For full details of the Abpromise, please visit <https://www.abcam.co.jp/abpromise> or contact our technical team.

Terms and conditions

- Guarantee only valid for products bought direct from Abcam or one of our authorized distributors